

# Ota Informa

## April 10<sup>th</sup>, 2024 Edition



Edited and issued by  
Ota International  
Association



太田インフォルマ 2024年4月10日号 (英語版)

P1. 外国人市民相談窓口ワンストップセンター「令和6年4月からベトナム語が追加になりました!」・英語の外国人市民相談窓口ワンストップセンター開設日・ごみの出し方の外国語版パンフレットがあります

P2. こども広場「B のくに」利用割引券・児童手当が変わります・狂犬病予防注射を受けましょう!・犬&猫 避妊去勢手術費助成金

P3. 国保加入&脱退届出を忘れずに・土曜日無料法律相談ははじめました・4~5月の無料法律相談

P4. 休日当番医・急患のみ診察可能な救急指定病院・平日夜間急病診療所・休日歯科診療・ハローワークおた外国人出張行政相談コーナー

\*折り込みチラシ:

✓外国人市民相談窓口ワンストップセンター開設時間・災害時言語ボランティア募集中! ✓太田フォトスケッチ VOL.6 ワークショップ参加者募集「あなたの話を聴かせてください」 ✓太田警察署からのお知らせ「ルールを守って、安全運転」「あなたのまちの交番&駐在所」

From **April** 2024

Consultation Counter for Foreign Residents:

**Vietnamese** is available.

See the attachment or our website for details.



Assistance in **English** in Ota City Hall

**Monday - 9:00 to 11:30**

**Thursday - 13:00 to 16:00**

**Location:** Ota City Hall (1F / Next to *Yamazaki Y Shop*)

Consultation Counter for Foreign Residents *Gaikokujin Shimin Soudan Madoguchi One Stop Center*

**Contact:** Ota City Hall ☎0276-47-1111 (general) & 0276-47-1908 (Weekdays only; 8:30-12:00 / 13:00-17:00)

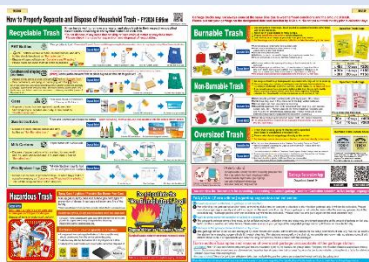
Notification of Birth, Child-Rearing Allowance and Public Assistance consultations can take time, so please come by early. Closed on public holidays including Year-End and New Year holidays.

## FY 2024 Trash Management Brochure

An updated, translated versions of the **Collection of Household Trash Calendar**, **How to Separate and Dispose of Household Trash Properly** and **Matters Concerning Oversized Trash** are available at the Cleaning and Disposal Service Division, the Residents' Affairs Division *Shimin-Ka*, the Consultation Counter for Foreign Residents *Gaikokujin Shimin Soudan Madoguchi One Stop Center* and on the city website.



How to  
Separate and  
Dispose



Trash  
Collection



Oversized  
Trash

Languages: **English**, Portuguese, Spanish, Chinese and Vietnamese

Contact Information:

Cleaning and Disposal Service Division "*Seisou Jigyuu-Ka*" ☎0276-31-8153

## Discount Tickets FOR B no Kuni Indoor Facility

**Kodomo Hiroba B no Kuni:** Ota-Shi Uekino-Cho 253-1

**Age group:** Kids 6-months-old to 3<sup>rd</sup> grade elementary students (must live in Ota)

*\*Parent / guardian must be present.*

**Fee:** 200-yen after discount

**Distribution Locations:** Child-raising Consultation Division (Ota City Hall, 3F), Information (Ota City Hall, 1F), *Jidou Center, Jidou-Kan, Kodomo-Kan* and East and West Service Center

**How to Apply:** Fill out the applications provided at the distribution locations during facilities open hours.

**Note:** An application is required for each family and you may not apply for more than one day. Please check the city website for more information (Japanese).

**Contact Information:**

Child-raising Consultation Division *Kosodate Soudan-Ka* (3F/Counter 30) ☎0276-47-1911



## Childcare Allowance

The system of childcare allowance, *Jidou Teate*, will be changed from October 2024 (December 2024 for payments by bank transfer). For more details regarding the changes, please refer to the notice to be mailed around June 2024, or check the city website (Japanese).

**Contact Information:** Children's Affairs Division *Kodomo-Ka* (3F/Counter 31) ☎0276-47-1942



## Get a Rabies Vaccination.

All owners for dogs 91 days of age or older are obliged to have annual injections, so all dogs must be given every year.

**Injections are available either at VETs or at the following group vaccination location.**

Injections are available at VETs or the following location.

**Injection at VET:** Fees vary by veterinary hospital. Please contact hospitals directly for details.

**Cost for Issuance of Rabies Vaccination Tag: 550-yen**

**Note:** If you receive an injection at a VET that does not issue the tag, please come to the Environmental Policy Division (Ota City Hall, 5F). For more information on hospitals and other facilities that you can receive Rabies Vaccination Tags or other details, please check the city website (Japanese).

**Group Vaccination:** Come directly to the venue with a rabies' vaccination notice, *Kyoukenbyou Yobou Chusha Tsuchisho* (post card) and the fee (3,500-yen).

**Date:** May 19<sup>th</sup> (Sun.), 2024

**Time:** 9:30 – 11:30 or 13:00 – 15:00

**Location:** City Hall (South side parking space)



**If your dog has not been registered yet, please register at the time of vaccination.**

**New Registration Fee: 3,000-yen**

## Subsidies for Spraying / Neutering of Dogs and Cats

**Amount of Subsidy:** 1/3 of the cost (per dog / cat)

**Female dogs:** maximum of 5,000-yen per dog

**Female / male cats:** maximum of 3,000-yen per cat

**Conditions:** (Not applicable for commercial purposes.)

- Female dogs (must be registered and have received a FY 2024 vaccination shot for rabies) or female / male cats owned by the city residents.
- All household members must not have any municipal taxes (incl. National Health Insurance taxes) in arrears.

**How to Apply:** Bring the Certificate of Completed Surgery *Shujutsu Jisshizumi Shoumeisho*, bankbook and *inkan*-seal, to the Environmental Measures Division (Ota City Hall, 5F) by **March 31 (Mon.), 2025**.

**Note:** Subsidies will not be provided for surgical procedures conducted in past fiscal years.

Provision of subsidies will end once the budget meets its capacity.

**Contact:** Ota City Hall (5F/ Counter 54),

Environmental Measures Division *Kankyou Taisaku-Ka* ☎0276- 47-1893



# Enrollment/Cancellation of National Health Insurance

Please enroll in **National Health Insurance *Kokuho*** if you are self-employed, agricultural worker, not employed or covered by their employer's insurance, or not enrolled in some form of medical insurance program.

**Procedure Deadline:** within 14 days after changes, in principle  
(Please be sure to follow the procedure even if the deadline has passed.)

## Enrolling into National Health Insurance

If you lose your Social Health Insurance *Shaho* after retiring, quitting, etc., you must enroll in National Health Insurance. National Health Insurance premiums will be levied retroactively to the date of withdrawal of social insurance.

**Required Documents:** Social Insurance Withdrawal Certificate *Shakai Hoken Ridatsu (Soushitsu) Shoumeisho*, I.D. (Resident *Zairyu* Card, driver's license etc.), My Number Card (or the Notification Card)



Japanese only

## Canceling National Health Insurance



Japanese only

You must cancel your National Health Insurance if you start enrolling in your employer's health insurance (incl. *Shaho*). If your dependents are also covered by the insurance, you must cancel it for them as well. Please note that you will continue receiving insurance premium bills if you are late canceling your National Health Insurance. If you use your National Health Insurance card after you have been enrolled in social health insurance, you will be responsible for refunding all fees covered by them. Please check for the QR codes for mail-in procedures (right) and online procedures (left).



Japanese only

**Required Documents:** Both National and Social Health Insurance Card, I.D. (Resident *Zairyu* Card, driver's license etc.), My Number Card (or the Notification Card)

**Contact:** Ota City Hall (1F / Counter 16),  
National Health Insurance Division *Kokumin Kenkou Hoken-Ka* ☎0276-47-1825

## FREE LEGAL ADVICE will begin ON Saturdays FROM April.

It has started from this fiscal year for those who are difficult to seek advice on weekdays.

**Date and Time:** Third Saturday of every month (by appointment only) 9:30 – 12:00

**Location:** Residents' Consultation Division (City Hall 3F, Counter 38), \*A staff member will guide you to the venue.

**Who is eligible:** Residents or workers in the city

**How many:** 7 persons per day

**How to apply:** Call (TEL: **0276- 47-1897**) or visit the department in person from the Monday of the previous week. The dates and times of consultations, including weekdays, are listed in the first issue of the city's newsletter, *Kouhou Ota*, every month.

**Information:** Ota City Hall (3F / Counter 38), Residents' Consultation Division, *Shimin Soudan-ka* ☎ **0276- 47-1897**

## FREE LEGAL ADVICE

(Only in Japanese.)

Location	Date	Hours	Time/person	Information / Appointment	Note
Ota City Hall Hall (3F / Counter 38)	April 17 <sup>th</sup> (Wed.), <b>April 20<sup>th</sup> (Sat.)</b> , May 1 <sup>th</sup> (Wed.)	9:30-12:00	20 mins	Ota City Hall, Residents' Consultation Division, <i>Shimin Soudan-ka</i> ☎ <b>0276- 47-1897</b> (Limited to those who live or work within the city limits)	Service at all locations require an appointment beforehand; you can make an appointment up to 2 weeks in advance.
	April 11 <sup>th</sup> (Thu.), 25 <sup>th</sup> (Thu.)	13:30-16:00			
	May 9 <sup>th</sup> (Thu.)	9:30-12:00 13:30-16:00			
Fukushi <i>Kaikan</i> (Ota-Shi Iida- Cho 1549)	April 15 <sup>th</sup> (Mon.)	13:00-16:00	20 mins	Ota City Social Welfare Conference ☎ <b>0276-46-6208</b> (Preferences will be given to those who reside or work within the city limits)	





# Doctors on Duty on Sundays and Holidays (Emergency)

If you have a fever or respiratory symptoms, please call from car, etc. before visiting clinics. (I.M. → Internal Medicine)

Apr. 21 (Sun.)	I.M. / Pediatrics	Iyasaka Resort Clinic (Hon-Cho)	0276-56-9585
	I.M. / Dermatology / Urology	Kawada Clinic (Yura-Cho)	0276-33-7755
	Orthopedics	Ogino Seikeigeka Clinic (Minamiyajima-Cho)	0276-38-0867
Apr. 28 (Sun.)	I.M. / Pediatrics	Sugitate Iin (Dainogo-Cho)	0276-46-9345
	I.M.	Kuroiwa Naika Kokyukika Clinic (Kamitajima-Cho)	0276-32-9618
	Otorhinolaryngology (E.N.T.)	Sato Jibiinkouka Iin (Iizuka-Cho)	0276-48-4526
Apr. 29 (Mon.)	I.M. / Pediatrics	Ehara Naika Clinic (Shimokobayashi-Cho)	0276-60-3130
	Gynecology / I.M.	Takara Josei Clinic (Yura-Cho)	0276-32-2159
	Ophthalmology	Ota Suzuki Ganka (Hachiman-Cho)	0276-55-5402
May 3 (Fri.)	I.M. / Pediatrics	Fukagawa Clinic (Komaigi-Cho)	0276-45-0133
	Surgery / I.M.	Ojima Clinic (Kasukawa-Cho)	0276-40-7171
	Obstetrics-gynecology	Iwasaki Iin (Arai-Cho)	0276-45-5818
May 4 (Sat.)	I.M.	Oshima Ichoka Naika Clinic (Niino-Cho)	0276-33-7500
	Orthopedics	Kayama Seikeigeka Iin (Iida-Cho)	0276-45-0511
May 5 (Sun.)	I.M. / Pediatrics	Takizawa Iin (Nitta Akabori-Cho)	0276-55-1010
	I.M.	Kaneko Clinic (Iwasegawa-Cho)	0276-30-2626
	Dermatology	Taguchi Iin (Komaigi-Cho)	0276-46-1384
May 6 (Mon.)	I.M. / Pediatrics	Waga Clinic (Obara-Cho)	0277-20-4370
	Urology / I.M. / Dermatology	Tsuchiya Clinic (Hosoya-Cho)	0276-33-7250
	Ophthalmology	Baba Iin (Takahayashi Higashi-Cho)	0276-38-0220

Note: The doctors above are only on duty for seeing emergency patients. Other patients are asked to seek treatment on weekdays.

## Designated Emergency Hospitals providing Medical Services (only to emergency patients)

Please call the Hospital Guidance Telephone Service ☎0276-45-7799 to confirm available medical services.

Ota Kinen Byouin ☎0276-55-2200

IMS Ota Chuo Sougou Byouin ☎0276-37-2378

Motojima Sougou Byouin ☎0276-22-7131

Shiroyama Byouin ☎0276-46-0311

Horie Byouin ☎0276-38-1215

Kouaikai Dai Ichi Byouin ☎0277-78-1555

## Weeknight Emergency Infirmery (I.M. or Pediatrics)

Location: Ota-Shi Health Hoken Center 1F Address: Iida-Cho 818 ☎0276-60-3099

Reception Hours: Mon. to Sat. -18:45-21:45\* (Excluding public holidays) \*The reception hours may change.

Note: Treatments for mild illnesses are available. Please call before visit to check which specialist is on duty.

## Dental Services on Sundays, Holidays, and Year-End/New Year Holidays (10:00~13:00)

Ota Nitta Shika Ishi Kaikan (Note: southwest of Ota City Hall; 2-3 min away walking distance.) ☎0276-45-7320

# Hello Work OTA in Ota City Hall



Governmental Consultation Branch for Foreign Residents

**Tuesday 13:00 to 16:00** (Excluding public holidays, year-end and new year holidays)

Location: Ota City Hall (1F), Consultation Counter for Foreign Residents

Contact: Hello Work OTA ☎0276-46-8609

## Simple Japanese やさしい日本語 Ota Informa is available on our website.

For more information about Ota Informa, please contact at the OTA CITY HALL, International Affairs Division (Kokusai-Ka) and the OTA INTERNATIONAL ASSOCIATION (Ota-Shi Kokusai Kouryu Kyoukai).

Address: 〒373-8718 Ota-Shi Hama-Cho 2-35

Tel: 0276-47-1908 & 0276-48-1001 / FAX: 0276-48-1012 Email: otaia@mx.city.ota.gunma.jp

Website: <http://www.city.ota.gunma.jp/005gyosei/0020-007kikaku-kouryu/kokusaikouryu-eng/index.html>

太田市役所国際課・太田市国際交流協会 (英語版行政情報)



This information bulletin is available at: Aeon Mall Ota, Airys Hall Arena, Arts Museum and Library Ota, Comprehensive Social Education Center Shakai Kyouiku Sougou Center, Cultopia Karutopia, Cultural Learning Center Gakushuu Bunka Center, Hello Work Ota, Ota Pension Office Ota Nenkin Jimusho, Ota Main Post Office Ota Yuubinkyoku, Ota Police Station Ota Keisatsusho, every Community Gyousei Center, every Health Hoken Center, every Service Center, Ojima Government Building Ojima Chousha, Ota City Hall (Information Desk, Consultation Counter for Foreign Residents Gaikokujin Shimin Soudan Madoguchi One Stop Center), and on the Ota International Association website.