

Ota Informa

October 10th, 2022 Edition

Edited and Issued by
Ota International Association

For more information!
(Informa back issues,
COVID-19, etc.)



太田インフォルマ 2022年10月10日号 (英語版)
P1. 地域に暮らす外国人住民向けアンケート・太田スポレク祭・成人式 二十歳を祝う会・エフエム太郎 (76.7MHz) で外国語放送
P2. 中学生「学校給食費無料化」・令和5年度保育施設利用の申し込み
P3. 狂犬病集合注射・滞納整理を強化しています・市税の10月納税
Eイズ&特定感染症の検査・無料相談 (法律・交通事故)
P4. 休日当番医・急患のみ診察可能な救急指定病院・平日夜間急病診療所・休日歯科診療・英語の外国人市民相談窓口ワンス
トップセンター開設日・ハローワークおた外国人出張行政相談コーナー
*折り込みチラシ: ✓新型コロナワクチン関連情報「3&4回目接種」・「特定健診の受診は12月20日(火)まで・おとなの検診 (集団検診)・10月の胸部レントゲン (結核&肺がん) 集団検診・インフルエンザ予防接種」
✓太田警察署からのお知らせ「あなたの安易な行動が犯罪になるかもしれません」・「あなたのまちの交番&駐在所」

Survey FOR Foreign Residents in Ota City

Please let us know what your life is like to help us developing interaction with the local community, improving everyone's lives together.

The questionnaire only takes five minutes, just scan the QR Code, fill them in, and click "送信" to submit at the end. We are looking forward to hearing your voice!

https://docs.google.com/forms/d/e/1FAIpQLSfsv5JPkLzXmvhFvNIYpwt4qN8i29G5DFcPPMcDCYvt0lcdcA/viewform?usp=sf_link

Contact: Ota City Hall, International Affairs Division "Kokusai-Ka" ☎0276-47-1908



Ota Sports and Recreation Festival in 2022

The festival will be held for the first time in three years. There will be competitions, stage events, and various booths and stalls. (Traffic restrictions from 7:30 ~ 10:35 on October 23.)

Oct. 22nd (Sat.) 9:30~15:30 (Neputa - 17:00 ~ 17:50)

Oct. 23rd (Sun.) 10:00~15:30 (Joushu Ota Subaru Marathon* - 7:45~)

*Rain or shine (Cancelled in case of stormy weather.)

Location: Ota Sports Park "Ota-Shi Undou Koen" Address: Ota-Shi Iizuka-Cho 1059-1

Contact: Sports Promotion Division "Sports Shinkou-Ka" ☎0276-45-8118

Coming of Age Ceremony

Date: January 8, 2023 (Sunday)

Location: Ota Civic Hall "Ota Shimin Kaikan" (Ota-Shi Iizuka-Cho 200-1)

Age Group: Born April 2nd, 2002 ~ April 1st, 2003

For those who wish to participate but have moved out of the city (change of resident registration), please apply through the city website or contact the Lifelong Learning Division.

Contact: Ota City Hall, Lifelong Learning Division "Shougai Gakushuu-Ka" Tel. 0276-22-3442



Part	Starting	Junior High School "Chuugakkou" graduated from
1	11:30	Kyuhaku, Godo, Morita, Ojima, Kizaki, Ikushina, Watauchi, Yabuzukahonmachi, Ota, Gunma Kokusai Academy, junior high schools outside of Ota
2	15:00	Nishi, Kita, Higashi, Minami, Housen, Jousai, Joutou, Asahi, Ota Yougo

Broadcast in foreign languages on FM Taro (76.7 MHz)

Ota's local radio delivers multilingual news (content from NHK World Radio Japan)!

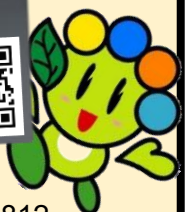
Broadcasting time and date: Monday to Friday

●English: AM 9:21 - (15 mins)

●Portuguese: AM 9:36 - (9 mins)

Also available via a smartphone application (**Radimo**).

Information: Ota City Hall (3F / Counter 39), Public Relation Division "Kouhou-Ka" ☎0276-47-1812



Free School Lunches for Junior High School Students

is starting from this month! (No application required)

Eligibilities: Ota Municipal Junior High School (except for "Ota Chuugakkou") or Second Semester Course at Compulsory Education School Students **Note:** Monthly bills will automatically stop.

"Full Exemption for the Second-born onward" for School Lunch will continue.

If children are enrolled in an elementary school, Ota Chuugakkou, school out of the city, private school, and prefectural special-needs school, they will continue to be eligible for the school lunch subsidy (for the second child and onward).

Requirements for Exemption from October 2022

- ✓ Must have two or more children born on or after April 2, 2002 (excluding children who are married) and are still financial dependents
- ✓ Must be registered as a resident in the city.
- ✓ Must be enrolled in medical insurance.
("Must not be in arrears with city taxes, etc." is no longer a requirement.)

For those who need to apply

• Online applications are accepted through the "Gunma Denshi Shinsei System." Please scan the QR code (①) on the right. (Only in Japanese). If you prefer to fill in a paper application form, please contact the School Facilities Management Division.

For those who have already received the exemption for this FY year do not need to apply.

Exemption Period: From October 2022 to March 2023

Please scan the QR code (②) on the right and see the details in English.

Example



Not Eligible

Children born on or before April 1, 2002

Eligible



1st Child

Aged 15,
JHS Student

FREE

Eligible



2nd Child

Aged 10,
Elm. Sch. Student

100% exemption!

①



②



The Municipal Tax and other taxes that you pay are the source of funds for free school meals, please cooperate by paying them in time.

Contact: School Facilities Management Division "Gakkou Shisetsu Kanri-Ka" ☎ 0276-20-7086

Applying for Nurseries "Hoikuen" FY2023

The enrollment guide and applications are distributed at the Children's Affairs Division and nurseries "Hoikuen."

Eligible persons to apply: Parents / guardians who wish to use childcare services from April 2023

Or mid-year enrollment for parents / guardians who will finish their childcare leave and wish to use childcare services in FY2023

Eligible children: Both infants and their parents / guardians must live and be registered in Ota City and infants are able to be taken care of in a group setting. (Infants 9 weeks - before their 1st year of elementary)

Conditions using childcare services: Guardians who are unable to take care of their children at home because of one of the reasons below.

- ◆ Work outside of home (64 hours / month or more)
- ◆ Work at home (e.g. self-employed, farming, working a side job), excludes housework (64 hours / month or more)
- ◆ Those who are seeking employment (including those who are preparing to open a business)
- ◆ Those who are pregnant or who have given birth recently (8 weeks prenatal; 8 weeks post childbirth)
- ◆ Those with an illness, injury, or mental / physical disability
- ◆ Nursing / taking care of a sick / disabled family member in regular basis (64 hours / month or more)
- ◆ Those who are receiving either schooling or vocational training (64 hours / month or more)
- ◆ In midst of restoring home after damage from fire, wind or floods, earthquake, or other disasters
- ◆ A victim of domestic violence (DV) or abuse

Childcare hours: Available for parents / guardians who require services; must be within the childcare's operation hours.

How to apply: Submit your application form with required documents at the application venue below. Please check for changes (including location, hours) on the city's website.

Application periods (excludes weekends and public holidays), hours and locations:

1st Call - **October 17 (Mon.) - 27 (Thu.), 2022, 9:00-11:00 / 13:00-16:00,**
at the meeting room "Dai Kaigishitsu," City Hall (3F near counter 31)

2nd Call - **February 1 (Wed.) - 10 (Fri.), 2023, 8:30-17:15**
at the Children's Affairs Division "Kodomo-Ka", City Hall (3F / counter 31)



Note: Admission decisions are not decided by the order of the applications. Applications are NOT accepted at nurseries. The first and last days of the application periods are expected to be crowded. Please avoid those days if you can, and bring as few people as possible when submitting your application.

Nurseries may be viewed anytime. Please contact them directly.

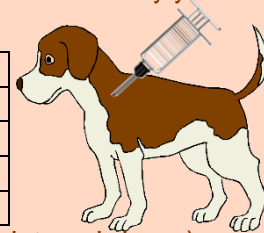
Contact: Ota City Hall (3F / Counter 31), Children's Affairs Division "Kodomo-Ka" ☎ 0276-47-1943

Group Rabies Vaccinations for Dogs!

For dogs over 91 days old, their owners are responsible for having their dogs vaccinated for rabies once every year.

Date: **October 23rd (Sunday), 2022**

Time	Location
9:00 – 10:10	Ota City Hall (South side car park)
10:50 – 11:30	Ojima Government Building “Ojima Chousha”
13:00 – 14:20	Nitta Government Building “Nitta Chousha”
14:50 – 15:30	Yabuzukahonmachi Government Building “Yabuzukahonmachi Chousha”



Fee: 3,500-yen (An additional registration fee of 3,000 yen will be charged for unregistered dogs.)

Items to bring: Rabies Vaccination Notice (postcard size)

- The dog's health may prevent it from receiving vaccinations.
- The vaccination is also available at veterinary clinics. (An additional consultation fee may apply.)

Contact: Ota City Hall (5F / Counter 54), Environmental Measures Division “Kankyou Taisaku-Ka” ☎ 0276-47-1893

Arrears clearance has been increased.

TAXES MUST BE PAID ON TIME. If you are in arrears, please pay promptly. (A delinquency charge will be charged.)

Percentage of delinquency charge per year in 2022	
From the day following the deadline until the day one month has elapsed	2.4%
From two months after the deadline	8.7%

General flow of coercive seizure in case of non-payments:

Demand / Dunning Letter “Tokusoku” ⇒ Reminder of Overdue Tax Payment “Saikoku” ⇒ Investigation of property “Zaisan Chousa” ⇒ Disposition for failure to pay “Tainou Shobun” (Seizure of property and assets)

If you have a question or would like to have a consultation regarding tax payment, please contact the Tax Collection Division “Shuno-Ka” in Ota City Hall (2F / Counter 23) ☎ 0276-47-1936.

Upcoming Fiscal Year 2022 Payment Deadlines for Municipal Taxes



Municipal/Prefectural Inhabitant Tax (3rd period) and National Health Insurance Tax (4th period)

is due on **October 31st, (Monday)**. Please make payments by the deadline.

Contact: Tax Collection Division “Shuno-Ka” in Ota City Hall (2F / Counter 23) ☎ 0276-47-1820

Examination for AIDS & Other Specific Infectious Diseases

The consultation and examination is **FREE, Confidential, and Anonymous.**

Date: **October 17th (Mon.), 2022**

Time: **8:45 am to 10:30 am** (make an appointment in advance by telephone) Location: Ota Health & Welfare Office “Ota Hoken Fukushi Jimusho” Address: Ota-Shi Nishihon-Cho 41-34, ☎0276-31-8243 (Located along Ota Route 312, near junction with Route 2.) *Examination may be cancelled to prevent the spread of COVID-19.



FREE LEGAL ADVICE

(Consultation in Japanese only) *Excludes holidays

Consultations may be cancelled to prevent the spread of COVID-19.



Location	Date	Hours	Capacity	Information / Appointment	Note
Ota City Hall (3F / Counter 38) Either by phone or in person (up to 2 people in the room)	Every Wednesday*	9:30~12:00	14	Ota City Hall, Residents' Consultation Division “Shimin Soudan-ka,” ☎ 0276-47-1897 (Limited to those who live or work within the city limits)	Service at all locations require an appointment beforehand; you can make an appointment up to 2 weeks in advance.
	October 20 th (Thursday)	13:30~16:00	7		
Fukushi Kaikan (Ota-Shi Iida-Cho 1549)	October 17 th (Monday)	13:00~16:00	7	Ota City Social Welfare Conference ☎ 0276-46-6208 (Preferences will be given to those who reside or work within the city limits)	
Legal advice through the phone	Mon. ~ Fri.*	13:00~16:00	—	Gunma Bar Association ☎ 027-233-9333	

FREE CONSULTATION ON TRAFFIC ACCIDENTS

(Consultation in Japanese only)

Gunma Prefectural Government Office (20F) (Address: Maebashi-Shi Ote-Machi 1-1-1)	Mon. ~ Fri.*	9:00~15:30	—	Gunma Prefectural Government Office, Traffic Accident Consultation Center “Koutsuu Jiko Soudanjo,” ☎ 027-243-2511	No prior appointment is necessary; please come by 15:00
--	--------------	------------	---	---	---

Doctors on Duty on Sundays and Holidays (Emergency)

If you have a fever or respiratory symptoms, please call from car, etc. before visiting clinics. (I.M. → Internal Medicine)

Oct. 16 (Sun.)	I.M.	Kaneko Clinic (Iwasegawa-Cho)	0276-30-2626
	I.M./ Pediatrics / Dermatology	Kizaki Clinic (Nitta Kizaki-Cho)	0276-56-7770
	Breast Surgery	Ota Breast Clinic (Nishihon-Cho)	0276-50-1748
Oct. 23 (Sun.)	I.M.	Kobayashi Clinic (Serada-Cho)	0276-60-7560
	Dermatology / I.M. / Pediatrics	Araki Iin (Nitta Murata-Cho)	0276-57-2722
	Obstetrics-gynecology	Ito Sanfujinka (Iida-Cho)	0276-45-2330
Oct. 30 (Sun.)	I.M. / Dermatology / Urology	Kawada Clinic (Yura-Cho)	0276-33-7755
	I.M. / Pediatrics	Horikoshi Iin (Toriyama Shimo-Cho)	0276-22-2660
	Otorhinolaryngology (E.N.T.)	Fukuda Jibiinkouka Clinic (Shimokobayashi-Cho)	0276-60-3130
Nov. 3 (Thu.)	I.M.	Toda Iin (Hachiman-Cho)	0276-25-5556
	I.M. / Pediatrics	Suzuki Iin (Nitta Hayakawa-Cho)	0276-56-7876
	Ophthalmology	Josai Ganka (Niino-Cho)	0276-30-4177
Nov. 6 (Sun.)	I.M.	Yokomuro Iin (Ojima-Cho)	0276-52-0502
	Obstetrics-gynecology / I.M. / Pediatrics	Yamaguchi Iin (Dainogo-Cho)	0276-45-8818
	Ophthalmology	Harigaya Ganka (Higashihon-Cho)	0276-22-3642

Note: The doctors above are only on duty for seeing emergency patients. Other patients are asked to seek treatment on weekdays.

Designated Emergency Hospitals providing Medical Services (only to emergency patients)

(Please call the Hospital Guidance Telephone Service ☎0276-45-7799) to confirm available medical services.)

Ota Kinen Byouin ☎0276-55-2200

IMS Ota Chuo Sogo Byouin ☎0276-37-2378

Motojima Sogo Byouin ☎0276-22-7131

Shiroyama Byouin ☎0276-46-0311

Horie Byouin ☎0276-38-1215

Kouaikai Dai Ichi Byouin ☎0277-78-1555

Weeknight Emergency Infirmary (I.M. or Pediatrics)

Location: Ota-Shi Health "Hoken" Center 1F Address: Iida-Cho 818 ☎0276-60-3099

Reception Hours: Mon. to Sat. -18:45~21:45* (Excl. public holidays) *The reception hours may change.

Note: Treatments for mild illnesses are available. Please call before visit to check which specialist is on duty.

Dental Services on Sundays, Holidays, and Year-End/New Year Holidays (10:00~13:00)

Ota Nitta Shika Ishi Kaikan (Note: southwest of Ota City Hall; 2-3 min away walking distance.) ☎0276-45-7320

Assistance in English

Monday - 9:00 to 11:30

Thursday - 13:00 to 16:00

Location: Ota City Hall (1F), Consultation Counter for Foreign Residents "Gaikokujin Shimin Soudan Madoguchi One Stop Center"

Contact: Ota City Hall ☎0276-47-1111 (general) & 0276-47-1908 (Weekdays only; 8:30 - 12:00 / 13:00 - 17:15)

Notification of Birth, Child-Rearing Allowance and Public Assistance consultations can take time, so please come by early. Closed on public holidays including Year-End and New Year holidays.

Hello Work OTA in Ota City Hall

Governmental Consultation Branch Office for Foreign Residents

Tuesday - 13:00 to 16:00

(Excludes holidays, year-end and new year holidays)

Location: Consultation Counter for foreign residents (Ota City Hall 1F)

Contact: Hello Work OTA ☎0276-46-8609

Please wear a face mask for consultations! If you have symptoms of a sore throat, fever (37.5°C or above), cough, runny nose, headache, etc., please DO NOT come to the consultation counter and call us instead.



Simple Japanese “やさしい日本語” Ota Informa

Available on our website, please check the QR code (on the left) or the link below.

<https://www.city.ota.gunma.jp/005gyosei/0020-007kikaku-kouryu/kokusaikouryu/2021-1216-1341-167.html>

Contact: OTA CITY HALL, International Affairs Division "Kokusai-Ka" and OTA INTERNATIONAL ASSOCIATION "Ota-Shi Kokusai Kouryu Kyouka" Address: 〒373-8718 Ota-Shi Hama-Cho 2-35 (Ota Shiyakusho) ☎0276-47-1908 & 0276-48-1001

FAX: 0276-48-1012 Email: otaia@mx.city.ota.gunma.jp

<http://www.city.ota.gunma.jp/005gyosei/0020-007kikaku-kouryu/kokusaikouryu-eng/index.html>

Facebook page!



太田市国際課・太田市国際交流協会（英語版行政情報）

This information bulletin is available at: Aeon Mall Ota, Airys Hall Arena, Arts Museum and Library Ota, Comprehensive Social Education Center "Shakai Kyouiku Sougo Center", Cultopia "Karutopia", Cultural Learning Center, Hello Work Ota, Ota Pension Office "Ota Nenkin Jimusho", Ota Main Post Office "Ota Yubinkyoku", Ota Police Station "Ota Keisatsusho", every Community "Gyousei" Center, every Public Health "Hoken" Center, every Service Center, Ojima Government Building "Ojima Chousha", Ota International Center "Ota-Shi Kokusai Kouryu Center", Ota City Hall (Information Desk, Consultation Counter for Foreign Residents "Gaikokujin Shimin Soudan Madoquchi" One Stop Center), and also available on the Ota International Association's website.

