

Ota Informa

December 10th, 2021 Edition

Edited and Issued by
Ota International Association

Scan this for more information!
(Informa back issues, COVID-19, etc.)



太田インフォルマ 2021年12月10日号 (英語版)

- P1. おおたイルミネーション&町民の森公園イルミネーション
OTAマルシェへ行こう・おおたの野菜ロビー市・やさしい日本語版太田インフォルマが始まりました
- P2. 年末のごみ処理はお早めに・外国人日本語スピーチコンテストの開催中止のお知らせ・英語の外国人市民相談窓口ワンストップセンター開設日・エイズ&特定感染症の検査
- P3. 年末年始、市役所などが閉まっている日・新型コロナワクチン関連情報「新型コロナワクチン追加接種(3回目)が始まります」&「初めて接種を希望する人へ」・大雪時の除雪に協力を市税の12月納税・ハローワークおおた外国人出張行政相談コーナー
- P4. 年末年始休日当番医・急患のみ診察可能な救急指定病院・平日夜間急病診療所・休日歯科診療
- *折り返しチャシ: ✓新型コロナワクチンの注射をしたあとも新型コロナウイルスの病気になるよう注意が必要です! &新型コロナワクチンの注射を打ちましょう!! ✓市役所に来なくても、住民票や税の証明が取れます!・太田市行政センター一覧 ✓マイナンバーカードをお持ちの外国人住民のみなさまへ ✓太田警察署からのお知らせ「冬の交通事故防止」・「あなたのまちの交番&駐在所」 ✓税務署からのお知らせ

Ota Illumination

Why not spend a magical moment surrounded by twinkling lights?

City Hall

Until Jan. 29th (Sat.), 2022 (17:00 - 22:00)

Nitta Keyaki Namiki

Location: East side of Nitta Airys Hall

Until Feb. 28th (Mon.), 2022 (After sun-set till 22:00)

Contact: Ota City Hall (5F / Counter 53), Tourism Exchange Division "Kanko Kouryu-Ka" ☎0276-47-1833

Chomin no Mori Koen

Location: Ojima Government Building "Ojima Chousha"

Enjoy the hand-made illuminations by volunteer groups.

Until Jan. 29th (Sat), 2022 (17:00 - 22:00) **Note:** The period is subject to change.

Contact: Volunteer Center ☎0276-60-7280

Ota Marché

Dates: Dec. 11th (Sat.)*, 12th (Sun.)*, 18th (Sat.), and 19th (Sun.), 2021 (11:30 - 16:00)

Note*: Hirosaki (Aomori Prefecture) Product Market is held on those days.

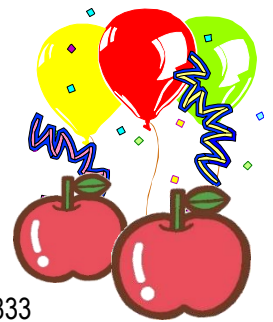
(Japanese sweets "Dagashi" and yo-yo fishing will be on sale.)

Location: Ota Sports Park "Undo Koen Namikimichi"

Address: Ota-Shi Iizuka-Cho 1059-1

A large collection of delicious food and local products.

Contact: Ota City Hall (5F / Counter 53), Tourism and Exchange Division "Kanko Kouryu-Ka" ☎0276-47-1833



Market in the City Hall Lobby Fresh vegetables from the city!

Date: December 14th (Tuesday) from 10:00 (Sales will end as soon as the products sold out.)

Location: City Hall Lobby (1F)

Products: Yamato potatoes, leeks, burdock roots, spinaches, etc.

Contact: Ota City Hall, Agricultural Policy Division, "Nougyo Seisaku-Ka" ☎0276-20-9714

Simple Japanese “やさしい日本語” Ota Informa starts from this month.

Available on our website, please check the QR code or the link.

<https://www.city.ota.gunma.jp/005gyosei/0020-007kikaku-kouryu/kokusaikouryu/index.html>

For further information, please contact at: Ota International Association

"Ota-Shi Kokusai Kouryu Kyoukai" ☎0276-48-1001

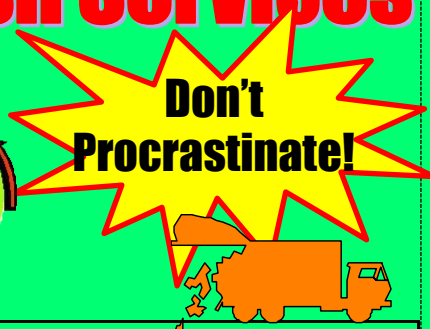


Year-End and New Year Trash Services

Clean Plaza and Recycle Plaza are very busy at the end of the year, so please help us by bringing in your items by mid-December.

● Direct carry-ins costs: 130 yen per 10 kg for household trash
(200 yen business related trash.)

Note: Please use of transparent / semi-transparent bags
(excluding non-burnable and trimmed branches).



	Location	Year-End (services end)	New Year (services resume)	Contact
Collection	Designated Trash Stations	Dec. 31st (Fri.)	Jan. 4th (Tue.)	Cleaning and Disposal Service Division "Seiso Jigyo-Ka" ☎ 0276-31-8153
	Door-to-door pick up (oversized trash)	Dec. 24th (Fri.)	Jan. 6th (Thu.)	
Direct Take-in	Clean Plaza (burnable)	Dec. 29th (Wed.) Dec. 30th (Thu.) 8:30~12:00 and 13:00~15:00	Jan. 4th (Tue.)	Each Plaza Ota-Shi Hosoya-Cho 604-1 ☎ 0276-33-7980
	Recycle Plaza (non-burnable and oversized)			
	Nitta Green Recycle Center (trimmed branches)	Dec. 28th (Tue.)	Jan. 4th (Tue.)	

Japanese Speech Contest for Speakers of Foreign Languages has CANCELLED.

The Contest which was planning to be held in February 2022 has cancelled to prevent the spread of Covid-19. Thank you for your understanding and cooperation.

Contact: Ota International Association "Ota-Shi Kokusai Kouryu Kyoukai" ☎ 0276-48-1001



Assistance in English

Mondays: 9:00 - 11:30 and Thursdays: 13:00 - 16:00

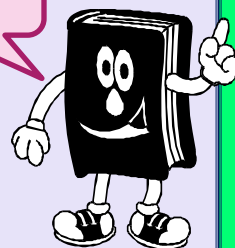
Location: Ota City Hall (1F),
Consultation Counter for Foreign Residents
"Gaikokujin Shimin Soudan Madoguchi One Stop Center"

Contact: Ota City Hall
☎ 0276-47-1111 (general) & ☎ 0276-47-1908

The Public Assistance and Child-rearing Allowance consultations can take time, so please come by early. Closed on holidays including Year-End and New Year holidays.

Please do not come if you have any symptoms of a cold, including fever (37.5 degree or higher), cough, runny nose, sore throat, headache and call instead.

Wear a mask and stay safe!



Examination for AIDS & Other Specific Infectious Diseases

The consultation and examination is FREE, Confidential, and Anonymous. Date: **January 17th (Mon.), 2022**

Time: 8:45 AM to 9:45 AM (make an appointment in advance by telephone) **Location:** Ota Health & Welfare Office "Ota Hoken Fukushi Jimusho" **Address:** Ota-Shi Nishihon-Cho 41-34, ☎ 0276-31-8243 (Located along Ota Route 312, near junction with Route 2.) *Examination may be cancelled to prevent the spread of COVID-19.



OIA Facebook page!

• OTA CITY HALL, International Affairs Division "Kokusai-Ka" and
• OTA INTERNATIONAL ASSOCIATION "Ota-Shi Kokusai Kouryu Kyoukai"
Address: 〒373-8718 Ota-Shi Hama-Cho 2-35 (Ota Shiyakusho)
☎ 0276-47-1908 & 0276-48-1001 FAX: 0276-48-1012 email: otaia@mx.city.ota.gunma.jp
<http://www.city.ota.gunma.jp/005gyosei/0020-007kikaku-kouryu/kokusaikouryu-eng/index.html>
太田市国際課・太田市国際交流協会 (英語版行政情報)

Year-End and New Year Holiday Closure at administrative offices in Ota City

City Hall, Community "Gyosei" Center, Health "Hoken" Centers,
and East and West Service Centers

December 29th (Wed.), 2021 - January 3rd (Mon.), 2022

Covid-19 Vaccination



Additional vaccinations (3rd dose) will begin.

Priority will be given to health care workers who have received the second dose of vaccination.

Time of vaccination: Approximately 8 months or more after completion of the second vaccination.

Note: There will be further announcements about vaccinations for people including those aged 65 and over.

For people who want to be vaccinated for the first time

Mass vaccinations (run by the city) are no longer accepted. If you wish to be vaccinated, please contact at an available medical institution for individual vaccination. (Access the QR code on the right for further information.)

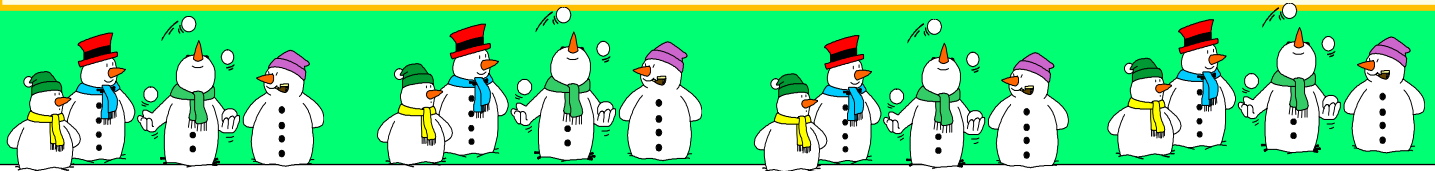


COVID-19 Vaccination

For more information, please visit the city's website or contact the city's call center above.

Ota City Vaccination Call Center

☎ 0570-074-650 8:30 – 17:15 (Monday to Sunday incl. public holidays)



In times of heavy snow, we need your cooperation!

Please read and follow the instructions below for safe and efficient removing the snow on roads in times of heavy snow. We appreciate your cooperation.

- ✓ Change to winter / snow tires or have tire chains available ASAP.
- ✓ Do not discard snow on the road or park your car on the side of the road.
- ✓ Please stay away from snow removal machines.

Note 1: The main roads will be cleared with first priority.

Note 2: There are cases when workers may conduct work during the middle of the night.

Contact:

Ota City Hall (8F / Counter 81), Road Maintenance and Improvement Division "Douro Seibi-Ka" ☎0276-47-1835

Upcoming Fiscal Year 2021 Payment Deadlines for Municipal Taxes

Fixed Property (4th period) and National Health Insurance Tax (6th period) is due on

December 27th, 2021 (Monday).

Please be sure to make payments by the deadline. For tax payment inquiries, please contact the Tax Collection Division "Shuno-Ka" in Ota City Hall (2F / Counter 23) ☎ 0276-47-1820.

Please wear a face mask for consultations! If you have symptoms of fever (37.5°C or above), cough, runny nose, sore throat, headache, etc., please DO NOT come to the consultation counter and call us instead.

Hello Work OTA in Ota City Hall

Governmental Consultation Branch Office for Foreign Residents

Every **Tuesday** from 13:00 to 16:00 (Excludes holidays, year-end and new year holidays)

Location: Consultation Counter for foreign residents (Ota City Hall 1F)

Contact: Hello Work OTA ☎0276-46-8609



+ Doctors on Duty on Sundays and Holidays (Emergency)

If you have a fever or respiratory symptoms, please call from car, etc. before visiting clinics.

19 Dec. (Sun.)	Pediatrics	Minami Yajima Kodomo Clinic (<i>Minamiyajima-Cho</i>)	0276-60-0415
	I.M. / Pediatrics / Dermatology	Kizaki Clinic (<i>Nitta Kizaki-Cho</i>)	0276-56-7770
	I.M.	Yokomuro Iin (<i>Ojima-Cho</i>)	0276-52-0502
	Orthopedics	Koiso Seikeigeka Clinic (<i>Ryumai- Cho</i>)	0276-60-5518
26 Dec. (Sun.)	I.M. / Pediatrics	Fukagawa Clinic (<i>Komaigi-Cho</i>)	0276-45-0133
	I.M. / Surgery / Dermatology	Sakamoto Ichoka Iin (<i>Obara-Cho</i>)	0277-40-4111
	I.M.	Takeuchi Iin (<i>Iida-Cho</i>)	0276-30-0001
	Orthopedics / Plastic Surgery	Kenmochi Seikeigeka (<i>Higashihon-Cho</i>)	0276-25-2537
29 Dec. (Wed.)	I.M.	Sawano Clinic (<i>Ushizawa-Cho</i>)	0276-60-5050
	Surgery / I.M.	Kobayashi Ichouka Iin (<i>Arai-Cho</i>)	0276-45-9080
	I.M. / Pediatrics	Ito Naika Shonika Clinic (<i>Iizuka-Cho</i>)	0276-46-3311
	Ophthalmology	Baba Iin (<i>Takahayashihigashi-Cho</i>)	0276-38-0220
30 Dec. (Thu.)	I.M. / Pediatrics	Takizawa Iin (<i>Nitta Akabori-Cho</i>)	0276-55-1010
	I.M.	Kaneko Clinic (<i>Iwasegawa-Cho</i>)	0276-30-2626
	I.M.	Kobayashi Clinic (<i>Serada-Cho</i>)	0276-60-7560
	Orthopedics	Ogino Seikeigeka Clinic (<i>Minamiyajima-Cho</i>)	0276-38-0867
31 Dec. (Fri.)	I.M. / Pediatrics	Igarashi Iin (<i>Obara-Cho</i>)	0277-78-2405
	I.M.	Kuroiwa Naika · Kokyukika Clinic (<i>Kamitajima-Cho</i>)	0276-32-9618
	I.M. / Pediatrics	Ota Higashi Kodomo & Otona Shinryoujo (<i>Ryumai-Cho</i>)	0276-48-5611
	Ophthalmology	Okawa Ganka (<i>Shimokobayashi-Cho</i>)	0276-48-7700
1 Jan. (Sat.)	I.M. / Pediatrics	Shinohara Clinic (<i>Serada-Cho</i>)	0276-52-5501
	I.M.	Ota Kyoritsu Shinryoujo (<i>Ishihara-Cho</i>)	0276-45-4911
	I.M. / Pediatrics	Sugitate Iin (<i>Dainogo-Cho</i>)	0276-46-9345
	Dermatology	Taguchi Iin (<i>Komaigi-Cho</i>)	0276-46-1384
2 Jan. (Sun.)	Surgery / I.M.	Ojima Clinic (<i>Kasukawa-Cho</i>)	0276-40-7171
	I.M. / Pediatrics	Hirahara Naika Shoukakika (<i>Komaigi-Cho</i>)	0276-45-3891
	I.M.	Iijima Kokyukika Naika Clinic (<i>Shimokobayashi-Cho</i>)	0276-49-1121
	Dermatology	Yura Hifuka Clinic (<i>Yura-Cho</i>)	0276-55-8622
3 Jan. (Mon.)	I.M. / Pediatrics	Ehara Naika Clinic (<i>Shimokobayashi-Cho</i>)	0276-60-3130
	Pediatrics	Mayuzumi Kodomo Clinic (<i>Obara-Cho</i>)	0277-32-6522
	I.M.	Shimohamada Clinic (<i>Shimohamada-Cho</i>)	0276-47-7330
	Orthopedics	Ishida Seikeigeka Iin (<i>Yura-Cho</i>)	0276-32-6566
9 Jan. (Sun.)	I.M. / Surgery	Kutsuna Clinic (<i>Yura-Cho</i>)	0276-60-4475
	I.M.	Kasuga Iin (<i>Hon-Cho</i>)	0276-22-2257
	Pediatrics / I.M.	Motohashi Clinic (<i>Bessho-Cho</i>)	0276-31-5071
	Obstetrics-gynecology	Fujii Ladies Clinic (<i>Higashiyajima-Cho</i>)	0276-60-3111
10 Jan. (Mon.)	I.M.	Fujigaoka Byouin (<i>Kumano-Cho</i>)	0276-22-1281
	Urology / I.M.	Ota Hinyoukika Naika Clinic (<i>Higashiyajima-Cho</i>)	0276-38-8833
	I.M. / Pediatrics	Arisaka Iin (<i>Ryumai-Cho</i>)	0276-45-3681
	Otorhinolaryngology (E.N.T.)	Maehara Jibiinkouka Clinic (<i>Shimokobayashi-Cho</i>)	0276-30-2777

Note 1: The doctors above are only on duty for seeing emergency patients. Other patients are asked to seek treatment on weekdays.

Note 2: Emergency medical services are subject to change. Please call the telephone number below for confirmation.

Hospital Guidance Telephone Service for Emergency Cases: ☎0276-45-7799

I.M. → Internal Medicine

Designated Emergency Hospitals providing Medical Services (only to emergency patients)

Ota Kinen Byouin ☎0276-55-2200

IMS Ota Chuo Sogo Byouin ☎0276-37-2378

Motojima Sogo Byouin ☎0276-22-7131

Shiroyama Byouin ☎0276-46-0311

Horie Byouin ☎0276-38-1215

Kouaikai Dai Ichi Byouin ☎0277-78-1555

Weeknight Emergency Infirmary (Pediatrics or I.M.)

Location: Ota-Shi Hoken (Public Health) Center 1F Address: Iida-Cho 818 ☎0276-60-3099

Reception Hours: Mon. to Sat. -18:45~21:45 (Excluding public holidays)

Note: Treatments for mild illnesses are available. Please call before visit to check which specialist is on duty.

Dental Services on Sundays, Holidays, and Year-End/New Year Holidays (10:00~13:00)

Ota Nitta Shika Ishi Kaikan (Note: southwest of Ota City Hall; 2-3 min away walking distance.) ☎0276-45-7320



This information bulletin is available at: Aeon Mall Ota, Airys Hall Arena, Arts Museum and Library Ota, Comprehensive Social Education Center "Shakai Kyouiku Sougo Center", Cultopia "Karutopia", Cultural Learning Center, Hello Work Ota, Ota Pension Office "Ota Nenkin Jimusho," Ota Main Post Office "Ota Yubinkyoku," Ota Police Station "Ota Keisatsusho," every Community "Gyousei" Center, every Public Health "Hoken" Center, every Service Center, Ojima Government Building "Ojima Chousha," Ota International Center "Ota-shi Kokusai Kouryu Center," Ota City Hall (Information Desk, Consultation Counter for Foreign Residents "Gaikokujin Shimin Soudan Madoguchi" One Stop Center), and also available on the Ota International Association's website.