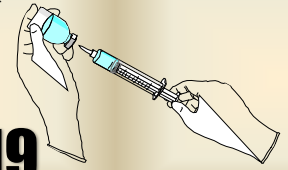


- P1 新型コロナワクチン優先接種(基礎疾患のある12~59歳の人)
- P2 65歳以上の方の新型コロナワクチン接種が進んでいます!  
外国語の新型コロナワクチンの予診票等



## Prioritize vaccination for COVID-19

### For people aged over 12 and below 59 with underlying medical conditions

If you wish to have vaccination priority, please apply in advance.

**Application period:** Until July 10<sup>th</sup> (Saturday)

※ For the applicants, the vaccination tickets will be sent from late July onwards.

**How to apply:** •Apply directly from the 2D code shown on the right

- Fill in the application form (available from the Ota City website) and fax it or bring it to each health “Hoken” Center (Fax 0276-46-5293)



※ People with underlying medical conditions are defined as those who meet any of the following criteria (as of March 18, 2021).

1. People with the following illness or conditions who receive outpatient or inpatient care

- |  |  |
|--|--|
| ① Chronic respiratory disease  | ⑩ Decreased body functions due to neurological or neuromuscular diseases (including breathing disorders)   |
| ② Chronic heart disease (including hypertension)   | ⑪ Chromosomal abnormality  |
| ③ Chronic kidney disease   | ⑫ Severe mental and physical disabilities (severe physical disabilities and severe intellectual disabilities)  |
| ④ Chronic liver disease (liver cirrhosis, etc.)  | ⑬ Sleep apnea syndrome   |
| ⑤ Diabetes being treated with insulin or medication, or diabetes associated with other diseases          | ⑭ Severe mental illness (hospitalized for treatment of mental illness, holding a mental disability certificate or falling under the category of “severe and continuous” in self-supporting medical care (psychiatric hospital care)) or intellectual disabilities (holding a rehabilitation certificate) |
| ⑥ Blood diseases (excluding iron deficiency anemia)  |  |
| ⑦ Diseases that impair the functioning of the immune system (including malignant tumors under treatment) |  |
| ⑧ Receiving treatment that depresses the immune system, including steroids                               |  |
| ⑨ Neurological and neuromuscular diseases associated with immune abnormalities                           |  |

2. Obese individuals who meet the criteria (BMI of 30 or higher)

$BMI = \text{Body weight (kg)} \div \text{height (m)} \div \text{height (m)}$

Guideline for BMI of 30: height of 170cm and weight of 87kg, height of 160cm and weight of 77kg

Reference: Ministry of Health, Labor and Welfare “Notice about vaccination of COVID-19(As of April 5, 2021)”

※ After you receive the vaccination tickets, please contact the family doctor and reserve directly. Also, please confirm to the family doctor beforehand whether they are available for the vaccination of COVID-19.

※ If your family doctor is unavailable for the vaccination, please confirm and reserve other medical institution which is available for vaccination from the 2D code on the top right of this page, or reserve at the Gunma Ken Digital Madoguchi from August onwards.

For elderlies between 60 and 64 years old, the vaccination tickets will be sent from late July onwards.

#### Contact Information

“Hoken” Centers in Ota City: Ota-Shi Health “Hoken” Center

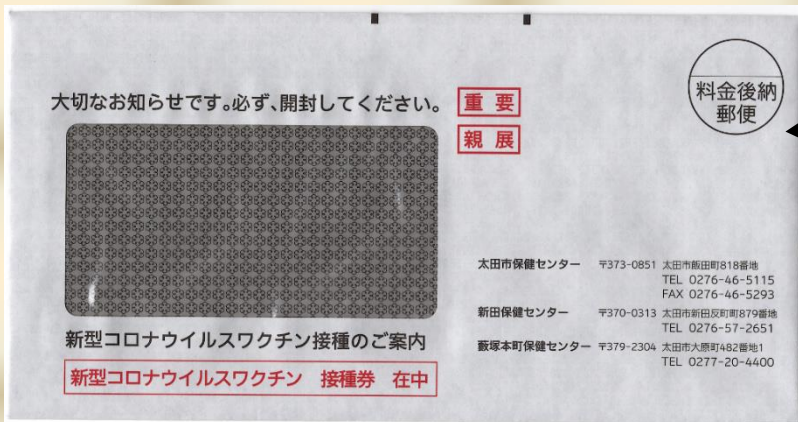
☎0276-46-5115

Nitta Health “Hoken” Center

☎0276-57-2651

Yabuzukahonmachi Health “Hoken” Center ☎0277-20-4400

# COVID-19 Vaccination for elderlies above the age of 65 is ongoing!



We sent the notice about COVID-19 vaccination to elderlies above the age of 65 with the envelope shown on the left.

- \* Those who are aged over 65 and haven't received the notice,
  - \* Those who lost the notice,
  - \* Those who haven't read the notice since you don't understand the contents,
- ⇒ **Please contact immediately to the phone numbers below if you wish to get vaccinated.**

○ If you can contact in Japanese:

Ota-shi Health "Hoken" Center TEL 0276-46-5115

○ If you need translation: Ota City Hall

Consultation Counter for Foreign Residents

"Gaikokujin Shimin Soudan Madoguchi" One Stop Center TEL 0276-47-1908

Ota International Association TEL 0276-48-1001



**Foreign language versions of the documents regarding to COVID-19 vaccine (Prevaccination screening questionnaire, etc.)**  
**(Website of The Ministry of Health, Labor and Welfare)**

Please fill in the Japanese form by referring to the translations.



[https://www.mhlw.go.jp/stf/seisakunitsuite/bunya/vaccine\\_tagengo.html](https://www.mhlw.go.jp/stf/seisakunitsuite/bunya/vaccine_tagengo.html)

Ota Informa Extra Edition (Issued on June 17, 2021)

Edited and issued by OTA CITY HALL, International Affairs Division "Kokusai-Ka" and

• OTA INTERNATIONAL ASSOCIATION "Ota-Shi Kokusai Kouryu Kyoukai"

Address: 〒373-8718 Ota-Shi Hama-Cho 2-35 (Ota Shiyakusho)

☎0276-47-1908 & 0276-48-1001 FAX: 0276-48-1012 email: otaia@mx.city.ota.gunma.jp

<http://www.city.ota.gunma.jp/005gyosei/0020-007kikaku-kouryu/kokusaikouryu-eng/index.html>