

Ota Informa

May 10th, 2021 Edition
 Edited and Issued by
 Ota International Association

Scan this
 for more information!
 (Informa back issues,
 Guild for Daily Life, etc.)



太田インフォルマ 2021年5月10日号 (英語版)

P1. コロナ禍でも受けようがん検診・フードバンクおたへ食品の寄付を
 P2. ごみの出し方の外国語パンフレットがあります・「男性の風しん対策」
 無料・屋内型遊戯施設こども広場「Bのくに」利用割引券を配布・ヒト
 パピローマウイルス (HPV) 感染症予防接種 (子宮頸がん予防ワクチン)・
 市税の5月納税

P3. 納め忘れの税金はありませんか・令和3年度所得関係証明の発行・狂
 犬病予防注射 (集合注射) を延期します・無料相談 (法律・交通事故)

P4. 休日当番医・急患のみ診察可能な救急指定病院・平日夜間急病診療
 所・休日歯科診療・ハローワークおた外国人出張行政相談コーナ
 ー・英語の外国人市民相談窓口ロウストップセンター開設日

* 折り込みチラシ:

✓外国語の新型コロナワクチンの予診票等&新型コロナワクチン
 接種コールセンター✓感染拡大防止のための留意点✓自動車税 (種
 別割) は、私たちの生活を守ります✓太田警察署からのお知らせ「こ
 んにちは巡回連絡です!」・「あなたのまちの交番&駐在所」✓日本
 の国民年金制度

Let's take cancer screenings even in the COVID-19 Pandemic!!



The purpose of cancer screening is to detect cancer and carry out an appropriate treatment at an earlier stage, and reduce cancer mortality.



Please open this envelope immediately!

Each medical check-up in FY 2021 starts from May.
 Please see the documents inside for more details.

Available screenings vary by your age and gender. For more details such as the date of group screening, please make sure to confirm by opening the envelope on the left.

Type of screenings:

Stomach cancer screening, Colorectal cancer screening, Chest X-ray (tuberculosis, lung cancer) screening, Cervical cancer screening, Breast cancer screening, Prostate cancer screening, Osteoporosis screening, Hepatitis screening, Health check-up, Periodontal disease screening, Special health check-up

Contact :

Health Promotion Division "Kenko Zukuri-Ka"
 Ota-Shi Health "Hoken" Center ☎0276-46-5115
 Nitta Health "Hoken" Center ☎0276-57-2651
 Yabuzukahonmachi Health "Hoken" Center ☎0277-20-4400

You could prevent COVID-19 by avoid from going to the screening, but you'll get your priorities wrong if the cancer progresses in your body while you're doing so.

Please take cancer screenings even in the COVID-19 pandemic!!

Please donate the surplus foods to Food Bank Ota!

We are supporting the people who have trouble making a living by providing foods.

From this April, we started accepting donates at 4 post office in the city.

Please cooperate donating the surplus foods at your house.

Reception hours: Same as the opening hours of the post office counters.

Reception place: Ota, Ojima, Kizaki, Yabuzukahonmachi Post Office

Foods that can be donated:

1. Canned foods, dried noodles, retort pouched foods (Which has more than 2 months until foods expiration date, unopened, and can store at room temperature)

※Alcoholic beverages cannot be accepted.

2. Brown rice (Which is produced in 2020 onwards and with no smells or bugs)

※Food Bank Ota (Kumano-cho) is accepting food donation at any time.



Contact:
 Social Assistance Division
 "Shakai Shien-Ka" ☎0276-47-1957

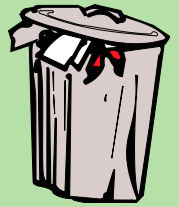
Household Trash Collection Calendar

An updated, translated version of "Collection of Household Trash" and "How to Separate and Dispose of Household Trash Properly" are available. If you would like a copy, please contact the Cleaning and Disposal Service Division "Seiso Jigyo-Ka", the Residents' Affairs Division "Shimin-Ka", or the Consultation Counter for Foreign Residents "Gaikokujin Shimin Soudan Madoguchi" One Stop Center.

※The calendar will be also available on Ota City website.

Languages available: English, Portuguese, Spanish, Chinese, Vietnamese

Contact Information: Cleaning and Disposal Service Division "Seiso Jigyo-Ka" ☎0276-31-8153



Rubella Subsidy Program for Men

If you have insufficient antibodies as a result of the antibody retention test, you are eligible to take the 5th periodical vaccination for rubella.

Period: Until February, 2022

Administered Medical Facilities: any administering medical facilities in the country

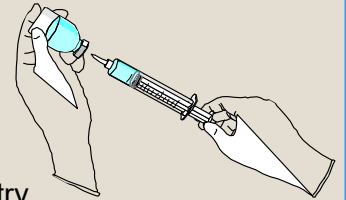
Eligible persons: men who were born between 4/2/1962 and 4/1/1979

※Although those who have already taken antibody retention test are ineligible(Once per person).

Things to bring: Rubella antibody retention test and rubella preventive vaccination tickets sent by post, I.D. (Resident "Zairyu" Card, Driver's License, etc.)

Fee: free

Contact Information: Health Promotion Division "Kenko Zukuri-Ka" ☎0276-46-5115



Discount Tickets Kid's Hiroba B no Kuni Indoor Facility (Uekino-cho)

Age group: Kids 6-months-old to 3rd grade elementary students (must live in Ota).

*Parent/guardian must be present.

Fee: 100 yen after discount

*one parent/guardian may enter with a fee of 100 yen per discount ticket.

Distribution Locations: Child-raising Consultation Division, Children's Center (Jido Center, Jidokan and Kodomo-Kan), and East and West Service Center

How to Apply: Fill out the applications provided at the distribution locations

※An application is required for each family. You may not apply for more than one day (must apply each time)

Contact Information: Child-raising Consultation Division "Kosodate Soudan-Ka" (3F/Counter 30) ☎0276-47-1911



Human papillomavirus Vaccination (Preventative Vaccination for Cervical Cancer)

The vaccination is one of the regular vaccinations, however, there were reported to cause chronic pains and other side effect which seem to have a relationship with the vaccine, so we have refrained from recommending vaccination actively and do not send notices for the vaccination individually. If you fully understand the aim, effect and potential adverse effect after the vaccination but still wish to receive the vaccine, please contact the division for a vaccination forms.

- **Eligible persons:** female whose age is equivalent to first grade junior high to first grade high school students
- **Number of Vaccination:** three times
- **Fee:** Free
- **Vaccination Location:** Designated medical facilities in Ota City

*Please see the city website for the details.

Contact Information: Health Promotion Division "Kenko Zukuri-Ka" ☎0276-46-5115

Upcoming FY2021 Payment Deadlines for Municipal Taxes

Fix Property (1st period) and Light Motor Vehicle (all periods) Tax is due on

May 31st, 2021 (Monday).

Please be sure to make payments by the deadline. For tax payment inquiries, contact the Tax Collection Division "Shuno-Ka" in Ota City Hall (2F/Counter 23) ☎ 0276-47-1820.

Do you have any Forgotten Unpaid Taxes?

If you have come across forgotten tax notices or have received a dunning letter or call notice, please make sure to check your records whether you paid your taxes.

✂ Please consult with us as soon as possible if you need to reissue payment slips or if you are having difficulties with paying taxes.



Contact Information: Tax Collection Division "Shuno-Ka" (2F/Counter 23) ☎0276-47-1936

Income Certificates for the 2021 Fiscal Year (Reiwa 3 Nendo) Available for Issue!

Issuing Date:

Individuals who have had their Municipal/ Prefectural Inhabitant Taxes deducted from their monthly salary (*Tokubetsu Choushuu*): **certificates available from May 14th(Friday), 2021**

For other taxpayers: **certificates available from June 10th(Thursday), 2021**

Certificates available at:

- ✓ Ota City Hall, Municipal Inhabitant Tax Division "Shiminzei-Ka"
- ✓ Community "Gyousei" Center (excludes Ota Community "Gyousei" Center)
- ✓ East "Higashi" Service Center / West "Nishi" Service Center

Contact Information: Municipal Inhabitant Tax Division "Shiminzei-Ka" (2F/Counter 22) ☎0276-47-1931

Group Dog Vaccinated for Rabies is postponed

Group Dog Vaccinated for Rabies is postponed to September onwards.

Please have your dog vaccinated individually (which needed to be done every year) at a veterinary clinic or other facility by December 31, 2021 (Friday).

What to bring: Rabies' vaccination notice (notice will be sent to dog owners who has registered at the city but have not been vaccinated in this fiscal year.)

Note: Procedures are needed if your dogs are vaccinated at veterinary clinics that are not members of the Gunma Veterinary Medical Association.

Contact Information:

Ota City Hall Environmental Policy Division "Kankyō Seisaku-Ka" (5F/counter 51) ☎0276-47-1953



FREE LEGAL ADVICE (Consultation in Japanese only) *Excludes holidays



Consultations may be cancelled to prevent the spread of COVID-19.

Location	Date	Hours	Capacity	Information / Appointment	Note
✂ Telephone consultation only	May 12 th (Wednesday)	9:30-12:00	12	Ota City Hall, Residents' Consultation Division "Shimin Soudan-ka," ☎ 0276-47-1897 (Limited to those who live or work within the city limits)	Service at all locations require an appointment beforehand; you can make an appointment up to 2 weeks in advance.
		13:30-16:00	12		
	May 19 th (Wednesday)	9:30-12:00	14		
	May 26 th (Wednesday)		14		
	May 20 th (Thursday)	13:30-16:00	6		
Fukushi Kaikan (Ota-Shi Iida-Cho 1549)	May 17 th (Monday)	13:00-16:00	7	Ota City Social Welfare Conference ☎ 0276-46-6208 (Preferences will be given to those who reside or work within the city limits)	
Legal advice through the phone	Mon. - Fri.*	13:00-16:00	—	Gunma Bar Association ☎ 027-233-9333	Approximately 10 minutes per person

FREE CONSULTATION ON TRAFFIC ACCIDENTS (Consultation in Japanese only)

Gunma Prefectural Government Office (20F) (Address: Maebashi-Shi Ote-Machi 1-1-1)	Mon. ~ Fri. (Except National Holidays)	9:00~15:30	—	Gunma Prefectural Government Office, Traffic Accident Consultation Center "Koutsuu Jiko Soudanjo," ☎ 027-243-2511	No prior appointment is necessary; please come by 15:00
--	---	------------	---	--	---



Doctors on Duty on Sundays and Holidays (Emergency)

If you have a fever or respiratory symptoms, please call before visiting clinics.

May 16 (Sun.)	I.M. / Surgery / Orthopedics	Arai Shinryoujo (Arai-Cho)	0276-46-1850
	Pediatrics	Nanairo Kodomo Clinic (Ryumai-Cho)	0276-55-5568
	Dermatology / Plastic Surgery / Pediatrics	Noguchi Hifuka Iin (Iizuka-Cho)	0276-60-1211
May 23 (Sun.)	Dermatology / CG / Pediatrics	Araki Iin (Nitta Murata-Cho)	0276-57-2722
	I.M. / Pediatrics	Sayaka Clinic (Hon-Cho)	0276-55-1365
	Ophthalmology	Fujiyama Ganka Iin (Hama-Cho)	0276-45-3358
May 30 (Sun.)	I.M. / Pediatrics / Dermatology	Kizaki Clinic (Nitta Kizaki-Cho)	0276-56-7770
	I.M.	Iijima Kokyukika Naika Clinic (Shimokobayashi-Cho)	0276-49-1121
	Breast Surgery	Ota Breast Clinic (Nishihon-Cho)	0276-50-1748
June 6 (Sun.)	Pediatrics	Minami Yajima Kodomo Clinic (Minamiyajima-Cho)	0276-60-0415
	I.M. / Dermatology / Urology	Kawada Clinic (Yura-Cho)	0276-33-7755
	Ophthalmology	Harigaya Ganka (Higashihon-Cho)	0276-22-3642
June 13 (Sun.)	I.M. / Pediatric	Hattori • Ebisusama Clinic (Iizuka-Cho)	0276-55-3111
	I.M. / Surgery	Toumou Keiai Byouin (Kamikobayashi-Cho)	0276-26-1793
	Ophthalmology	Josai Ganka (Nino-Cho)	0276-30-4177

* Note 1: The doctors above are only on duty for seeing emergency patients.
Other patients are asked to seek treatment on weekdays.

I.M. → Internal Medicine

* Note 2: Emergency medical services are subject to change. Please call the telephone number below for confirmation.
Hospital Guidance Telephone Service for Emergency Cases: ☎0276-45-7799

Designated Emergency Hospitals providing Medical Services (only to emergency patients)

Ota Kinen Byouin ☎0276-55-2200

IMS Ota Chuo Sogo Byouin ☎0276-37-2378

Motojima Sogo Byouin ☎0276-22-7131

Shiroyama Byouin ☎0276-46-0311

Horie Byouin ☎0276-38-1215

Kouaikai Dai Ichi Byouin ☎0277-78-1555

Weeknight Emergency Infirmary (Pediatrics or I.M.)

Location: Ota-Shi Hoken (Public Health) Center 1F Address: Iida-Cho 818 ☎0276-60-3099

Reception Hours: Mon. to Sat. -18:45~21:45 (Excluding public holidays)

Note: Treatments for mild illnesses are available. Please call before visit to check which specialist is on duty.

Dental Services on Sundays, Holidays, and Year-End/New Year Holidays (10:00~13:00)

Ota Nitta Shika Ishi Kaikan (Note: southwest of Ota City Hall; 2-3 min away walking distance.) ☎0276-45-7320



Hello Work OTA in Ota City Hall

Governmental Consultation Branch Office
for Foreign Residents

Every Tuesday from 13:00 to 16:00

(Excludes national holidays, year-end and new year holidays)

Location: Consultation Counter for foreign residents

(Ota City Hall 1F)

Contact: Hello Work OTA ☎0276-46-8609

Assistance in English

1st and 3rd Thursday
from 13:00 to 16:00

Location: Ota City Hall (1F), Consultation Counter for Foreign Residents "Gaikokujin Shimin Soudan Madoguchi One Stop Center"

Information: Ota City Hall

☎0276-47-1111 (general) or ☎0276-47-1908

The Public Assistance and Child-rearing Allowance consultations can take time, so please come by early. Closed on holidays including Year-End and New Year holidays.



Please wear a mask for consultations!

If you have symptoms of fever, cough, runny nose, sore throat, headache, etc., please DO NOT come to the consultation counter and call us instead.

This information bulletin is available at: Aeon Mall Ota, Airys Hall Arena, Arts Museum and Library Ota, Comprehensive Social Education Center "Shakai Kyouiku Sougo Center", Cultopia "Karutopia", Cultural Learning Center, Hello Work Ota, Ota Pension Office "Ota Nenkin Jimusho," Ota Main Post Office "Ota Yubinkyoku," Ota Police Station "Ota Keisatsusho," every Community "Gyousei" Center, every Public Health "Hoken" Center, every Service Center, Ojima Government Building "Ojima Chousha," Ota International Center "Ota-shi Kokusai Kouryu Center," Ota City Hall (Information Desk, Consultation Counter for Foreign Residents "Gaikokujin Shimin Soudan Madoguchi" One Stop Center), and also available on the Ota International Association's homepage.

- OTA CITY HALL, International Affairs Division "Kokusai-Ka" and
 - OTA INTERNATIONAL ASSOCIATION "Ota-Shi Kokusai Kouryu Kyoukai"
- Address: 〒373-8718 Ota-Shi Hama-Cho 2-35 (Ota Shiyakusho)
☎0276-47-1908 & 0276-48-1001 FAX: 0276-48-1012 email: otaia@mx.city.ota.gunma.jp
<http://www.city.ota.gunma.jp/005gyousei/0020-007kikaku-kouryu/kokusaikouryu-eng/index.html>
太田市国際課・太田市国際交流協会 (英語版行政情報)

