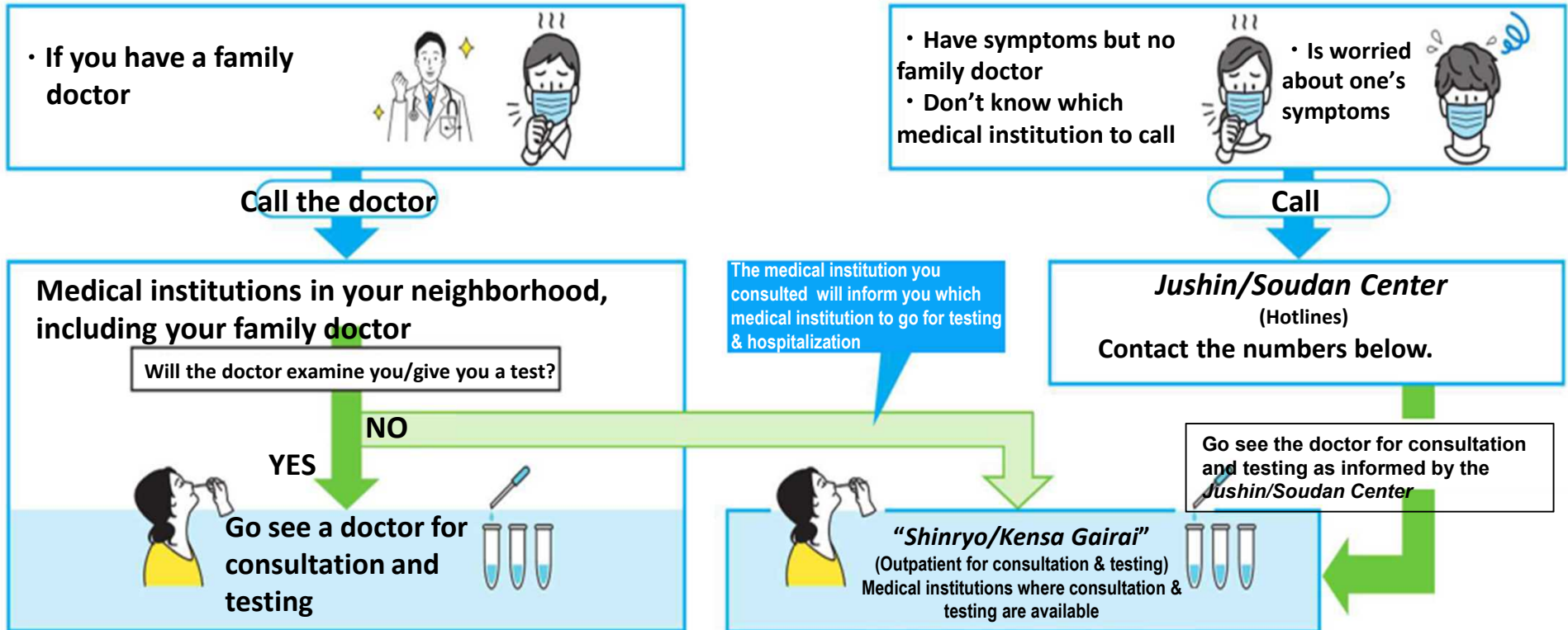


# What to do when you think you might have COVID-19 because you have a fever along with other symptoms



**Hotlines**

<b>Ken Jushin/Soudan Center</b> (Prefectural Hotline)	☎	<b>0570 - 082 - 820</b>	24/7
<b>Maebashi residents</b>	☎	<b>027 - 220 - 1151</b>	
<b>Takasaki residents</b>	☎	<b>027 - 381 - 6112</b>	

**Non-Japanese speakers, please call: 027 - 289 - 8275**  
 (One-Stop Consultation Center for Foreign Residents of Gunma)