



Ota Informa

February 10th, 2018 Edition

Edited and Issued by
Ota International Association

太田インフォルマ 2018年2月10日号 (英語版)

- P1. 第21回外国人日本語スピーチコンテスト開催
平成30年度おおたスポーツアカデミー新規受講生募集
- P2. 給食費や保育料を支援します！・国民健康保険の加入は適正に
- P3. 交通事故などで国保の保険証を使って受診する場合は届け出が必要
です(第三者行為)・ごみ収集車両の火災予防のお願い・市税の2月納税・無料相談(法律・交通事故)
- P4. 休日当番医・急患のみ診察可能な救急指定病院・平日夜間急病診療所・休日歯科診療・英語の外国人市民相談窓口開設日・エイズ
& 特定感染症の検査

*折り込みチラシ:

- ✓子育て支援対策 平成30年度学校給食費助成
- ✓太田警察署からのお知らせ「落とし物をしたとき、落とし物を拾ったとき」・「あなたのまちの交番&駐在所」
- ✓平成29年分の確定申告をされる外国人の方へ

The 21st Japanese Speech Contest for Speakers of Foreign Languages



Time: Opens at 13:00 on 3/4/18 (Sun.)

Place: Ota-Shi Gakushu Bunka Center Auditorium Hall (Ota-Shi Iizuka-Cho 1549-2)

<Speech>

Come listen to people from different countries share their experiences of Japan!!



Contact Information: Ota International Association

Address: 〒373-8718 Ota-Shi Hama-Cho 2-35 (Ota City Hall, 11F)

☎0276-48-1001, FAX: 0276-48-1012, E-mail: otaia@mx.city.ota.gunma.jp

Come Join us at Ota Sports Academy!

For Elementary and Junior High School Students



Whether you're trying to develop your skills or just getting into sports, come join us and have some fun!

- ※ Boys and girls can apply for any of the following sports (excludes women's soccer).
- ※ Soccer, rugby and judo are also available.

Please visit the Ota Sports Academy homepage or read the application guidelines distributed from the schools for information on fees and how to apply.

For more information: Ota Sports Academy ☎0276-45-8117



Sports Activities (*E=Elementary School; J=Junior High School; Number=Grade Year)

| | | |
|------------------------------------|--|----------------------|
| Wrestling (E1~J3) | Kids' track and field (E3~E6) | Gymnastics (E3~E6) |
| Softball (E1~J3) | Women's soccer (E6~J3) | Soft tennis (E5~J1) |
| Golf (E3~J3) | Tennis (regulation-ball) (E5~J3) | Table tennis (E3~J3) |
| Track and field (J students) | Kids' tennis (regulation-ball) (E3~E5) | Fencing (E2~J3) |
| Long distance running (J students) | Volleyball (J students) | Badminton (E4~J3) |

School Meal Subsidies for 2nd and 3rd Born Children Onward

Families are eligible to receive subsidies for their 2nd (50% reduction) and 3rd born child onward (100% exemption) for children entering municipal and private kindergartens and early childhood education and care centers (type 1) this coming April. Households must apply to all of the following conditions below:

- Raising 2 or more children born from April 2nd, 1998 onwards.
- Applicants and children eligible must have an address within Ota City.
- Applicant's family must all be enrolled in medical insurance.
- Municipal taxes must be paid and accounted for.
- ※ For those with unpaid taxes, please consult with their respective division.



Applications (distributed at kindergartens)

Applications are distributed at kindergartens and childcare facilities. Fill out and submit it at your respective kindergarten.

Private Kindergartens / Early Childhood Education and Care

Children's Affairs' Division (3F/Counter 31) ☎0276-47-1942

Municipal Kindergartens: Children's Facility Division ☎0276-47-1924



Assistance Program Application Period for Raising Your 3rd Child Onward

We are accepting applications for childcare exemption fees for the months of April onwards.

Application Period: until **February 23 (Fri.)** (excludes weekends and holidays)

Conditions for Applying (all conditions must be met)

- Raising 3 or more children born on April 2nd, 1998 onwards (April 2, 1997 onwards for those who go to private kindergartens outside of Ota City)
- Applicant and children eligible for exemption must have an address within Ota City.
- Applicant's family must all be enrolled in medical insurance.
- Municipal taxes must be paid and accounted for.
- ※ For those who are already receiving assistance need to follow the instructions on your application that were sent through post mail in mid-January



Things to bring: applicant's copy of their Health Insurance and "Inkan"-seal.

- ※ If you are living separately from your child (separate custody), additional documents may be required to submit.
- ※ Applications to receive Birth Money "Shussan Iwaikin" for 3rd born children onwards are accepted at any time. Please visit the city homepage for details.

Contact Information: Ota City Hall Children's Affairs Division "Kodomo-Ka" (3F / Counter 31) ☎0276-47-1942

Properly Enroll in National Health Insurance

The National Health Insurance (Kokuho) benefits those who are self-employed, employed in agriculture, and individuals in companies who do not offer health insurance. It also provides insurance for unemployed individuals.

Individuals who are currently enrolled in National Health Insurance may also be recognized as a dependent of their family's Social Health Insurance or Health Insurance Association if certain conditions are met.

The conditions (dependents' annual income, relationship with the person enrolled in Social Health Insurance, living arrangements, etc.) for acceptance may differ according to their place of employment. Please consult with their place of employment.

Please proceed with the withdrawal of your National Health Insurance at Ota City Hall if you are already enrolled in your employer's health insurance. (This applies to individuals who are enrolled in their employer's insurance but still possess a Kokuho Card.)

Places to enroll: Ota City Hall – National Health Insurance Division (1F/ Counter 16), East and West Service Center, or a select Community "Gyousei" Center

(excludes Ota Community "Gyousei" Center)※*Japanese only for service and community centers*

Things to bring: both insurance cards, "inkan"-seal and personal identification (Resident "Zairyu" Card, driver's license, etc.), and My Number (Notification) Card.

For more information: Ota City Hall – National Health Insurance Division "Kokumin Kenkou Hoken-Ka" ☎0276-47-1825



Notification required when using your National Health Insurance (Kokuho) Card to Cover Medical Fees caused by accidents, etc. (by the 3rd party)

Injuries from traffic accidents and fights caused by the third party will be temporarily covered with an advanced payment by your National Health Insurance, and later billed to the perpetrator of the incident. Please make sure to file a notification as soon as possible. If you fail to submit one, you will be responsible for refunding 70~90 percent of the medical bill.

Required items for your notification

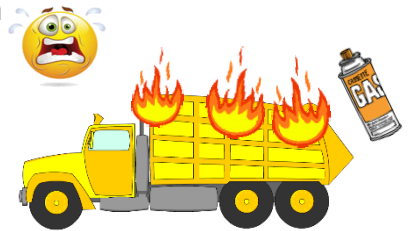
1. Third Party Injury and Illness Notification "Daisansha Kouji Shoubyou Todoke"
 2. Status report for accident "Jiko Hassei Jyoukyou Houkokusho"
 3. Memorandum (from the victim) "Nensho"
 4. Traffic Accident Statement (certificate) "Koutsu Jiko Shoumeisho"
 5. Health insurance card, "inkan"-seal, personal identification (Resident "Zairyu" Card, etc.)
- ※ *Items 1-3 are available at the National Health Insurance Division (City Hall, 1st floor)*
- ※ ***Make sure you submit a notification to Kokuho before your settlement!!***
- ※ *For those enrolled in insurances other than Kokuho, please submit your notification at your enrolled National Insurance Association.*



Contact Information: National Health Insurance Division (1F / Counter 16) ☎0276-47-1825

Spray Cans and Lighters are Considered Hazardous Trash!

At the end of last year, there were three cases involving garbage trucks catching on fire. This was most likely caused due to spray cans and lighters being tossed as non-burnable trash. These cans and lighters can be the cause of fire in trucks and facilities, which can also endanger garbage workers if they are disposed as non-burnable trash. To ensure no accidents occur, please make sure you separate and dispose this type of trash as hazardous garbage.



Contact Information: Seisou Cleaning Center ☎0276-31-8153

Upcoming Heisei 29 (FY2017) Payment Deadlines for Municipal Taxes



The National Health Insurance Tax (8th period) is due on

February 28th, 2018 (Wednesday).



Please be sure to make payments by the deadline. For tax payment inquiries, contact the Tax Payment Division "Nouzei-Ka" in Ota City Hall (2F / Counter 23) ☎0276-47-1820.

FREE LEGAL ADVICE (Consultation in Japanese only)

| Location | Date | Hours | Capacity | Information / Appointment | Note |
|---|--|-------------|----------|---|---|
| Ota City Hall (3F/Counter 38) | Every Wednesday | 9:30~12:00 | 14 | Ota City Hall, Residents' Consultation Division "Shimin Soudan-ka," ☎ 0276-47-1897 (Limited to those who live or work within the city limits) | Service at all locations require an appointment beforehand; you can make an appointment up to 2 weeks in advance. |
| Nitta Fukushi Sogo Center ("Fukushi Tou" Block) | February 15 th (Thursday) | 10:00~12:00 | 6 | | |
| Fukushi Kaikan (Ota-Shi Iida-Cho 1549) | February 19 th (Monday) | 13:00~16:00 | 7 | Ota City Social Welfare Conference ☎ 0276-46-6208 (Preferences will be given to those who reside or work within the city limits) | |
| Legal advice through the phone | Mon. ~ Fri. (Excludes National Holidays) | 13:00~16:00 | — | Gunma Bar Association ☎ 027-233-9333 | Approximately 10 minutes per person |

FREE CONSULTATION ON TRAFFIC ACCIDENTS (Consultation in Japanese only)

| | | | | | |
|---|--|------------|---|--|---|
| Gunma Prefectural Government Office (23F) (Address: Maebashi-Shi Ote-Machi 1-1-1) | Mon. ~ Fri. (Except National Holidays) | 9:00~15:30 | — | Gunma Prefectural Government Office, Traffic Accident Consultation Center "Koutsuu Jiko Soudanjo," ☎ 027-243-2511 | No prior appointment is necessary; please come by 15:00 |
|---|--|------------|---|--|---|

Doctors on Duty on Sundays and Holidays (Emergency)

| | | | |
|-------------------|------------------------------|--|--------------|
| Feb. 18 (Sun.) | I.M. | Takeuchi Iin (<i>Iida-Cho</i>) | 0276-30-0001 |
| | I.M. / Pediatrics | Shimohamada Clinic (<i>Shimohamada-Cho</i>) | 0276-47-7330 |
| | I.M. | Ota Kyoritsu Shinryoujo (<i>Ishihara-Cho</i>) | 0276-45-4911 |
| | Orthopedics | Ishii Seikeigeka Iin (<i>Yabuzuka-Cho</i>) | 0277-78-0211 |
| Feb. 25 (Sun.) | I.M. / Pediatrics | Igarashi Iin (<i>Obara-Cho</i>) | 0277-78-2405 |
| | I.M. | Shu Clinic (<i>Takahayashi Kita-Cho</i>) | 0276-38-1137 |
| | I.M. / Pediatrics | Ito Naika Shonika Clinic (<i>Iizuka-Cho</i>) | 0276-46-3311 |
| | Ophthalmology | Ogiwara Ganka (<i>Nitta Ichinoi-Cho</i>) | 0276-57-1110 |
| Mar. 4 (Sun.) | I.M. / Pediatrics | Sayaka Clinic (<i>Hon-Cho</i>) | 0276-55-1365 |
| | I.M. / Surgery / Dermatology | Sakamoto Ichoka Iin (<i>Obara-Cho</i>) | 0277-40-4111 |
| | I.M. / Pediatrics | Shinohara Clinic (<i>Serada-Cho</i>) | 0276-52-5501 |
| | Otorhinolaryngology (E.N.T.) | Hama-Cho Jibiinkouka Iin (<i>Hama-Cho</i>) | 0276-46-2821 |
| Mar. 11 (Sun.) | I.M. | Toda Iin (<i>Hachiman-Cho</i>) | 0276-25-5556 |
| | I.M. / Diabetes Medicine | Ota Tounyobyo Clinic (<i>Minamiyajima-Cho</i>) | 0276-55-6611 |
| | I.M. / Pediatrics | Sugitate Iin (<i>Dainogo-Cho</i>) | 0276-46-9345 |
| | Ophthalmology | Fujiyama Ganka Iin (<i>Hama-Cho</i>) | 0276-45-3358 |

* Note 1: The doctors and dentist above are only on duty for seeing emergency patients.
Other patients are asked to seek treatment on weekdays.

I.M. → Internal Medicine

* Note 2: Emergency medical services are subject to change. Please call the telephone number below for confirmation.
Hospital Guidance Telephone Service for Emergency Cases: ☎0276-45-7799

Designated Emergency Hospitals providing Medical Services (only to emergency patients)

Ota Kinen Byouin ☎0276-55-2200

Motojima Sogo Byouin ☎0276-22-7131

Horie Byouin ☎0276-38-1215

IMS Ota Chuo Sogo Byouin ☎0276-37-2378

Shiroyama Byouin ☎0276-46-0311

Kouaikai Dai Ichi Byouin ☎0277-78-1555



Weeknight Emergency Infirmary (includes Saturday) Hours: 18:45~21:45

Location: [Ota-Shi Hoken \(Public Health\) Center, 1F](#) Address: [Iida-Cho 818](#) ☎0276-60-3099

Note: Excluding holidays, year-end and New Year holidays.

Types of services: Internal Medicine or Pediatrics (Note: Please make sure to call before consultation.)

Dental Services on Sundays, Holidays, and Year-End/New Year Holidays (10:00~13:00)

Ota Nitta Shika Ishi Kaikan (Note: southwest of Ota City Hall; 2-3 min away walking distance.) ☎0276-45-7320



Assistance in English

Every 1st & 3rd Thursday
(2/15 and 3/1; excludes holidays)
From 13:00 to 16:00

Location: Ota City hall (1F), Consultation Counter for Foreign Residents "Gaikokujin Shimin Soudan Madoguchi" (near Counter 5)

Information: Ota City hall, ☎0276-47-1111 (general) & 0276-47-1908

★ The Public Assistance and Child-rearing Allowance consultations can take time, so please come by in the early working hours.
Closed on holidays including Year-End and New Year holidays.



Examination for AIDS & Other Specific Infectious Diseases

~ The consultation and examination is FREE, Confidential, and Anonymous ~

Every week on Mondays (except on holidays) from 8:45 to 9:45 (make an appointment in advance by telephone). The first Mondays of every month from 17:30 to 18:30 (make an appointment in advance by telephone).

Location: Ota Health & Welfare Office "Ota Hoken Fukushi Jimusho"

Address: Ota-Shi Nishihon-Cho 41-34, ☎0276-31-8243

※ Located along Ota Route 312, near junction with Route 2.

This information bulletin is available at: Airys Hall Arena, Arts Museum and Library Ota, Comprehensive Social Education Center "Shakai Kyouiku Sougo Center", Cultopia "Karutopia", Cultural Learning Center, Hello Work Ota, Ota Pension Office "Ota Nenkin Jimusho", Ota Main Post Office "Ota Yubinkyoku", Ota Police Station "Ota Keisatsusho", Touminrou Chinese Restaurant "Chuka Ryouri Touminrou" located at Ota City Hall 12F, every Community "Gyousei" Center, every Public Health "Hoken" Center, every Service Center, Ojima Government Building "Ojima Chousha", Ota International Association "Ota-shi Kokusai Koryuu Center", Ota City Hall (Information Desk, Consultation Counter for Foreign Residents "Gaikokujin Shimin Soudan Madoguchi"), and also available on the Ota International Association's homepage



• OTA CITY HALL, Exchange Promotion Division "Kouryu Suishin-Ka" and

• OTA INTERNATIONAL ASSOCIATION "Ota-Shi Kokusai Koryuu Kyokai"

Address: 〒373-8718 Ota-Shi Hama-Cho 2-35 (Ota Shiyakusho)

☎0276-47-1908 & 0276-48-1001 FAX: 0276-48-1012 email: otaia@mx.city.ota.gunma.jp

<http://www.city.ota.gunma.jp/005gyousei/0020-007kikaku-kouryu/kokusaikouryu-eng/index.html>

太田市交流推進課・太田市国際交流協会 (英語版行政情報)

