

Ota Informa

January 10th, 2018 Edition

Edited and Issued by
Ota International Association



The 21st Annual Japanese Speech Contest

The 21st annual Japanese Speech Contest will be held for individuals with foreign backgrounds. Participants will have an opportunity to express some of their feelings and experiences about Japan. Observers may watch the contestants present their speech in Japanese for free!

Date: March 4th, 2018 (Sunday)

Time: Opens at 13:00 and starts at 13:30.

Place: Ota-Shi Gakushu Bunka Center (Auditorium Hall)

Address: Ota-Shi Iizuka-Cho 1549-2

★ How to Apply ★

- ★ Fill in an application form available at Ota International Association (11th Floor, Ota City Hall) and submit it with your speech by February 7, 2018 (Wed.).
- ★ A downloadable application form is available on the Ota-Shi homepage, or contact us by phone/e-mail for an application form.
- ★ Your speech must be written in Japanese (length of speech: up to 5 min.). You may write about your experiences / first impressions of Japan and how they have changed (if they have), thoughts on how people of various cultural and ethnic backgrounds can co-exist, etc. The top contestants will receive certificates and prizes. All contestants will receive awards for participation!

Conditions to enter:

Japanese cannot be your native language

Individuals aged 16 and above on the day of the contest

Individuals who have not won first or second prize in a previous speech contest. **(No application fee!)**

Number of contestants: about 12 participants (if this number is exceeded there will be an application's screening process)

太田インフォルマ 2018年1月10日号 (英語版)

- P1. 第21回外国人日本語スピーチコンテスト開催と出場者募集
- P2. インフルエンザの流行に備えましょう・大雪時の除雪にご協力を
年金受給者が死亡したときは未支給年金が請求できます
国民健康保険税の納付額証明書を送付します
- P3. 県営住宅の入居者を募集します・SOS外国人のための法律相談
市税の1月納税・無料相談 (法律・交通事故)
- P4. 休日当番医・急患のみ診察可能な救急指定病院・平日夜間急病
診療所・休日歯科診療・英語の外国人市民相談窓口開設日
エイズ&特定感染症の検査

*折り込みチラシ:

- ✓平成30年度 市民税・県民税申告のご案内
- ✓太田警察署からのお知らせ「1月10日は110番の日です。」
「あなたのまちの交番&駐在所」
- ✓「外国人住民のための防災訓練」参加者募集中

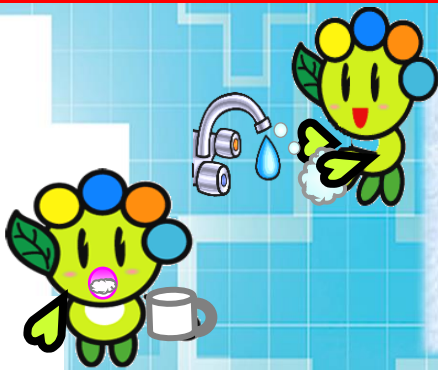


Sponsored by
Ota Chuo Lions
Club and Ota
International
Association

Contact Information: Ota International Association 〒373-8718 Ota-Shi Hama-Cho 2-35 (Ota City Hall, 11F)
☎0276-48-1001; FAX: 0276-48-1012; E-mail: otaia@mx.city.ota.gunma.jp

Prepare Yourselves Against an Influenza Outbreak!

It is important to have a good understanding of the influenza virus in order to protect your family's health!



Daily Preventative Measures are Essential

- Wash your hands and gargle daily
- Wear a gauze mask (make sure you're covering your nose!)
- Avoid crowds of people
- Maintain around 50~60% humidity in rooms
- Eat a balanced, nutritional meal and get plenty of sleep.

Let's Keep Our "Coughing Etiquette" in Mind

Many viruses are contained in the droplets produced from your sneezes and coughs. Influenza contagions are spread primarily through these droplets dispersed from sneezes and coughs.

- If you are about to cough or sneeze, please cover the area with a mask or tissue, and distance yourself 2 meters away from other people
- Please throw away tissues in an enclosed garbage can, and wash your hands thoroughly afterwards.



In times of heavy snow, we need your cooperation!

Please read and follow the instructions below for safe and efficient cleaning in times of heavy snow. We appreciate your cooperation.

- ✓ Please change to winter tires or tire chains ASAP (or have them in your possession).
- ✓ The main roads will be cleaned with first priority.
- ✓ Do not discard snow on the road or park your car on the side of the road.
- ✓ Please stay away from snow removal machines.
- ✓ Depending on the circumstances of the snow, there are cases when workers may conduct work during the middle of the night.



For more information: Road Maintenance and Improvement Division "Douro Seibi-Ka" 8F, ☎0276-47-1835

Unpaid Monthly Pension Stipends Must be Claimed if Beneficiary Dies

If a pension beneficiary dies, their stipend (up until the month of death) can be claimed by filing the proper paperwork. Kinsman of the third degree *sanshintou* (precedence-based: spouse>kids>father/mother) from the bereaved family who were sharing the burden of paying for living expenses with the deceased beneficiary must file paperwork in order to receive the remaining unpaid stipend.

Contact Information: *Nenkin* Dial ☎0570-05-1165; Ota Pension Office ☎0276-49-3716.



A Tax Certificate Showing Your Paid National Health Insurance Taxes Will Be Sent!

Ota City Hall will send a Tax Payment Certificate "Noufu Gaku Shoumeisho" (a postcard) showing your total national health insurance taxes paid from *January ~ December 2017* on **January 24, 2018 (Wed.)** to the head household of families enrolled in national health insurance. This certificate is necessary when filing/declaring your final income and municipal/prefectural inhabitant taxes.

For more information: Ota City Hall, Tax Payment Division "Nouzei-ka," (2F, counter 23) ☎0276-47-1936



Prefectural Housing for RENT



Possible move-in dates from: **April 1, 2018 (Sun.)** onward.

Conditions for eligibility: Families composed of 2 or more people (married couples, father and/or mother with child, etc.), or independent (single household) elderly and disabled individuals having difficulty finding a place to live.

Note: there is an income restriction.

* For more information, please read the recruitment guide for details (housing overview, requirements for moving in, etc.)

Application Deadline: January 18th, 2018 (Thurs.)

Please fill out the application forms provided at the Prefecture Housing Supply Corporation – Ota Branch (Ota City Hall 9F), East and West Service Center, Ota Civil Engineering Office, “Ota Doboku Jimusho”, etc. and send it by post mail (using the provided envelope) to “Gunma-Ken Jutaku Kyoukyuu Kousha.”

* We are always accepting applications for housing complexes for Ishihara, Housen, Toriyama, Hama-cho, Uchigashima, Yaba, Narizuka, Ikushina, and part of Ushizawa.

For more information: Gunma Housing Supply Corporation “Gunma-ken Jutaku Kyoukyuu Kousha” ☎027-223-5811

SOS - Legal Consultation Day for Foreigners

Free, Confidential, Interpreter Provided (English, Portuguese, Spanish, Chinese, and Tagalog)!

Date: **February 18, 2018 (Sun.)**

Location: Takasaki-Shi Chuo Kouminkan (Takasaki-Shi Suehiro-Cho 27)

Consultation time: 10:00~15:00 (priority given to reservations)

Consultants: lawyers, administrative procedure specialists, certified social insurance labor consultants

Contact Info: Gunma Association of Tourism, Local Products & International Exchange

☎027-243-7271 (090-1215-6113 on consultation days only)



Upcoming Heisei 29 (FY2017) Payment Deadlines for Municipal Taxes

The Municipal/Prefectural (4th period) and National Health Insurance Tax (7th period) is due on



January 31st, 2018 (Wednesday).



Please be sure to make payments by the deadline. For tax payment inquiries, contact the Tax Payment Division “Nouzei-Ka” in Ota City Hall (2F / Counter 23) ☎0276-47-1820.

FREE LEGAL ADVICE (Consultation in Japanese only)

Location	Date	Hours	Capacity	Information / Appointment	Note
Ota City Hall (3F/Counter 38)	Every Wednesday	9:30~12:00	14	Ota City Hall, Residents' Consultation Division “Shimin Soudan-ka,” ☎ 0276-47-1897	Service at all locations require an appointment beforehand; you can make an appointment up to 2 weeks in advance.
Nitta Fukushi Sogo Center (“Fukushi Tou” Block)	January 18 th (Thursday)	10:00~12:00	6	(Limited to those who live or work within the city limits)	
Fukushi Kaikan (Ota-Shi Iida-Cho 1549)	January 15 th (Monday)	13:00~16:00	7	Ota City Social Welfare Conference ☎ 0276-46-6208 (Preferences will be given to those who reside or work within the city limits)	
Legal advice through the phone	Mon. ~ Fri. (Excludes National Holidays)	13:00~16:00	—	Gunma Bar Association ☎ 027-233-9333	Approximately 10 minutes per person

FREE CONSULTATION ON TRAFFIC ACCIDENTS (Consultation in Japanese only)

Gunma Prefectural Government Office (23F) (Address: Maebashi-Shi Ote-Machi 1-1-1)	Mon. ~ Fri. (Except National Holidays)	9:00~15:30	—	Gunma Prefectural Government Office, Traffic Accident Consultation Center “Koutsuu Jiko Soudanjo,” ☎ 027-243-2511	No prior appointment is necessary; please come by 15:00
---	--	------------	---	--	---

+ Doctors on Duty on Sundays and Holidays (Emergency)

Jan. 14 (Sun.)	I.M. / Surgery	Toumou Keiai Byouin (<i>Kamikobayashi-Cho</i>)	0276-26-1793
	I.M.	Iijima Kokyukika Naika Clinic (<i>Shimokobayashi-Cho</i>)	0276-49-1121
	I.M. / Pediatrics	Ota Seibu Shinryoujo (<i>Yonezawa-Cho</i>)	0276-32-0301
	Otorhinolaryngology (E.N.T.)	Fukuda Jibiinkouka Clinic (<i>Shimokobayashi-Cho</i>)	0276-60-3130
Jan. 21 (Sun.)	I.M. / Pediatrics	Hattori • Ebisusama Clinic (<i>Iizuka-Cho</i>)	0276-55-3111
	I.M. / Pediatrics	Takizawa Iin (<i>Nitta Akabori-Cho</i>)	0276-55-1010
	I.M. / Surgery	Takarada Iin (<i>Nitta Kamieda-Cho</i>)	0276-40-8088
	Ophthalmology	Ota Chuo Ganka (<i>Yura-Cho</i>)	0276-31-6226
Jan. 28 (Sun.)	Dermatology / I.M. / Pediatrics	Araki Iin (<i>Nitta Murata-Cho</i>)	0276-57-2722
	Surgery / I.M.	Kobayashi Ichouka Iin (<i>Arai-Cho</i>)	0276-45-9080
	I.M. / Pediatrics	Nakano Iin (<i>Narizuka-Cho</i>)	0276-37-5800
	Orthopedics	Ogino Seikeigeka Clinic (<i>Minamiyajima-Cho</i>)	0276-38-0867
Feb. 4 (Sun.)	I.M. / Pediatrics	Horikoshi Iin (<i>Toriyama Shimo-Cho</i>)	0276-22-2660
	I.M.	Oshima Ichoka Naika Clinic (<i>Niino-Cho</i>)	0276-33-7500
	I.M. / Neurosurgery / Pediatrics	Minowa Clinic (<i>Yura-Cho</i>)	0276-40-4888
	Obstetrician-gynecology	Iwasaki Iin (<i>Arai-Cho</i>)	0276-45-5818
Feb. 11 (Sun.)	Pediatrics	Motegi Kodomo Clinic (<i>Wakiya-Cho</i>)	0276-55-2800
	I.M.	Yokomuro Iin (<i>Ojima-Cho</i>)	0276-52-0502
	Gynecology / I.M.	Takara Josei Clinic (<i>Yura-Cho</i>)	0276-32-2159
	Dermatology	Taguchi Iin (<i>Komaigi-Cho</i>)	0276-46-1384
Feb. 12 (Mon.)	I.M.	Fujigaoka Byouin (<i>Kumano-Cho</i>)	0276-22-1281
	I.M.	Kuroiwa Naika Kokyukika Clinic (<i>Kamitajima-Cho</i>)	0276-32-9618
	I.M. / Pediatrics	Fukagawa Clinic (<i>Komaigi-Cho</i>)	0276-45-0133
	Obstetrician-gynecology	Fujii Ladies Clinic (<i>Higashi Yajima-Cho</i>)	0276-60-3111

* Note 1: The doctors and dentist above are only on duty for seeing emergency patients.

I.M. → Internal Medicine

Other patients are asked to seek treatment on weekdays.

* Note 2: Emergency medical services are subject to change. Please call the telephone number below for confirmation.

Hospital Guidance Telephone Service for Emergency Cases: ☎0276-45-7799

Designated Emergency Hospitals providing Medical Services (only to emergency patients)

Ota Kinen Byouin ☎0276-55-2200

IMS Ota Chuo Sogo Byouin ☎0276-37-2378

Motojima Sogo Byouin ☎0276-22-7131

Shiroyama Byouin ☎0276-46-0311

Horie Byouin ☎0276-38-1215

Kouaikai Dai Ichi Byouin ☎0277-78-1555

Weekday Night Emergency Infirmary (I.M. or Pediatrics) Hours: 18:45~21:45

Location: Ota-Shi Hoken (Public Health) Center, 1F Address: Iida-Cho 818 ☎0276-60-3099

Consulting Days: Monday ~ Saturday (excluding holidays, year-end and New Year holidays)

Types of services: Internal Medicine or Pediatrics (Note: Please make sure to call before consultation.)

Dental Services on Sundays, Holidays, and Year-End/New Year Holidays (10:00~13:00)

Ota Nitta Shika Ishi Kaikan (Note: southwest of Ota City Hall; 2-3 min away walking distance.) ☎0276-45-7320

Assistance in English

Every 1st & 3rd Thursday
(1/18 and 2/1; excludes holidays)
From 13:00 to 16:00

Location: Ota City hall (1F), Consultation Counter for Foreign Residents "Gaikokujin Shimin Soudan Madoguchi" (near Counter 5)

Information: Ota City hall, ☎0276-47-1111 (general) & 0276-47-1908

★ The Public Assistance and Child-rearing Allowance consultations can take time, so please come by in the early working hours.

Closed on holidays including Year-End and New Year holidays.



Examination for AIDS & Other Specific Infectious Diseases

~ The consultation and examination is FREE, Confidential, and Anonymous~

Every week on Mondays (except on holidays) from 8:45 to 9:45 (make an appointment in advance by telephone).

Location: Ota Health & Welfare Office "Ota Hoken Fukushi Jimusho"

Address: Ota-Shi Nishihon-Cho 41-34, ☎0276-31-8243

※ Located along Ota Route 312, near junction with Route 2.

This information bulletin is available at: Airys Hall Arena, Arts Museum and Library Ota, Comprehensive Social Education Center "Shakai Kyouiku Sougo Center", Cultopia "Karutopia", Cultural Learning Center, Hello Work Ota, Ota Pension Office "Ota Nenkin Jimusho," Ota Main Post Office "Ota Yubinkyoku," Ota Police Station "Ota Keisatsusho," Touminrou Chinese Restaurant "Chuka Ryouri Touminrou" located at Ota City Hall 12F, every Community "Gyousei" Center, every Public Health "Hoken" Center, every Service Center, Ojima Government Building "Ojima Chousha," Ota International Association "Ota-shi Kokusai Koryuu Center," Ota City Hall (Information Desk, Consultation Counter for Foreign Residents "Gaikokujin Shimin Soudan Madoguchi"), and also available on the Ota International Association's homepage

Ota City Hall Exchange Promotion Division "Kouryu Suishin-Ka" Ota International Association "Ota-Shi Kokusai Kouryu Kyoukai"

Address: 〒373-8718 Ota-Shi Hama-Cho 2-35 (Ota Shiyakusho) ☎0276-47-1908 & 0276-48-1001 FAX: 0276-48-1012

Email: otaia@mx.city.ota.gunma.jp; <http://www.city.ota.gunma.jp/005gyousei/0020-007kikaku-kouryu/kokusaikouryu-eng/index.html>

太田市交流推進課・太田市国際交流協会 (英語版行政情報)

