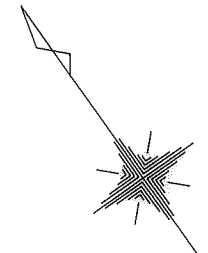
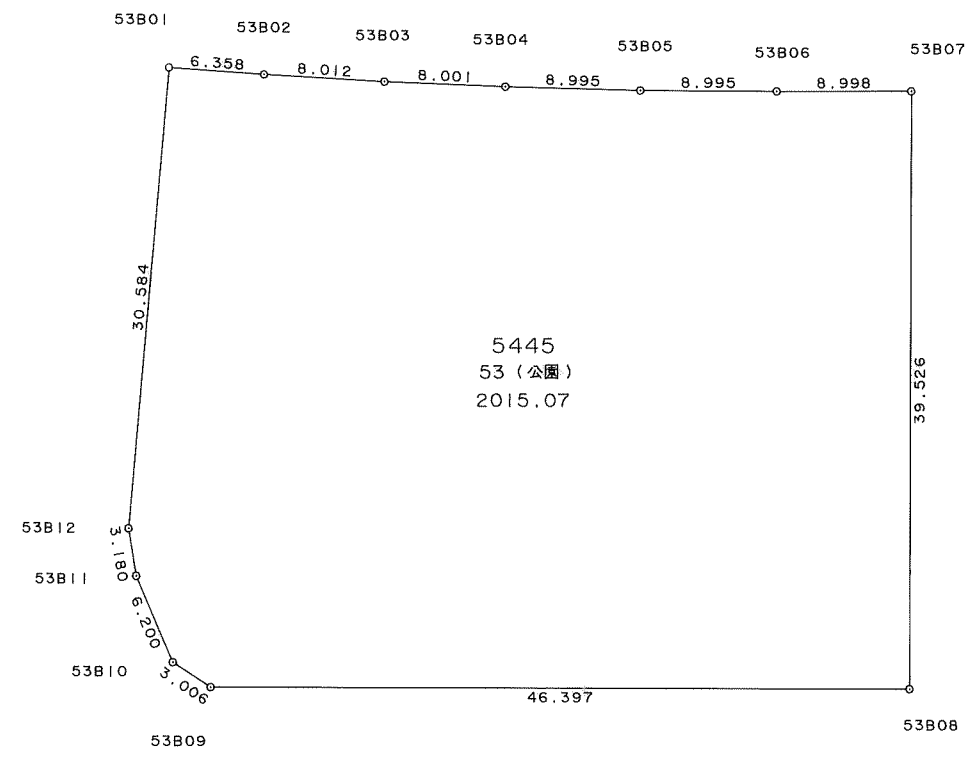


画地出来形確認測量図

53街区



S=1:500



面積計算書

地番: 53BL

測点	X	Y	DX	DY	距離	方向角	夾角	倍横距	倍面積
53B12	30295.369	-37616.225	-2.855	-1.401	3.180	206-08-17	165-53-38	-1.401	3.999855
53B11	30292.514	-37617.626	-6.056	-1.327	6.200	192-21-34	166-13-17	-4.129	25.005224
53B10	30286.458	-37618.953	-2.800	1.093	3.006	158-40-35	146-19-01	-4.363	12.216400
53B09	30283.658	-37617.860	-26.933	37.780	46.397	125-29-05	146-48-30	34.510	-929.457830
53B08	30256.725	-37580.080	32.188	22.940	39.526	35-28-37	89-59-32	95.230	3065.263240
53B07	30288.913	-37557.140	5.199	-7.344	8.998	305-17-44	89-49-07	110.826	576.184374
53B06	30294.112	-37564.484	5.252	-7.303	8.995	305-43-19	180-25-35	96.179	505.132108
53B05	30299.364	-37571.787	5.402	-7.192	8.995	306-54-38	181-11-19	81.684	441.256968
53B04	30304.766	-37578.979	4.897	-6.327	8.001	307-44-22	180-49-44	68.165	333.804005
53B03	30309.663	-37585.306	5.010	-6.252	8.012	308-42-24	180-58-02	55.586	278.485860
53B02	30314.673	-37591.558	4.041	-4.908	6.358	309-27-59	180-45-35	44.426	179.525466
53B01	30318.714	-37596.466	-23.345	-19.759	30.584	220-14-39	90-46-40	19.759	-461.273855
合計					178.252		1800-00-00		4030.141815
								面積	2015.070907
								坪数	609.558949