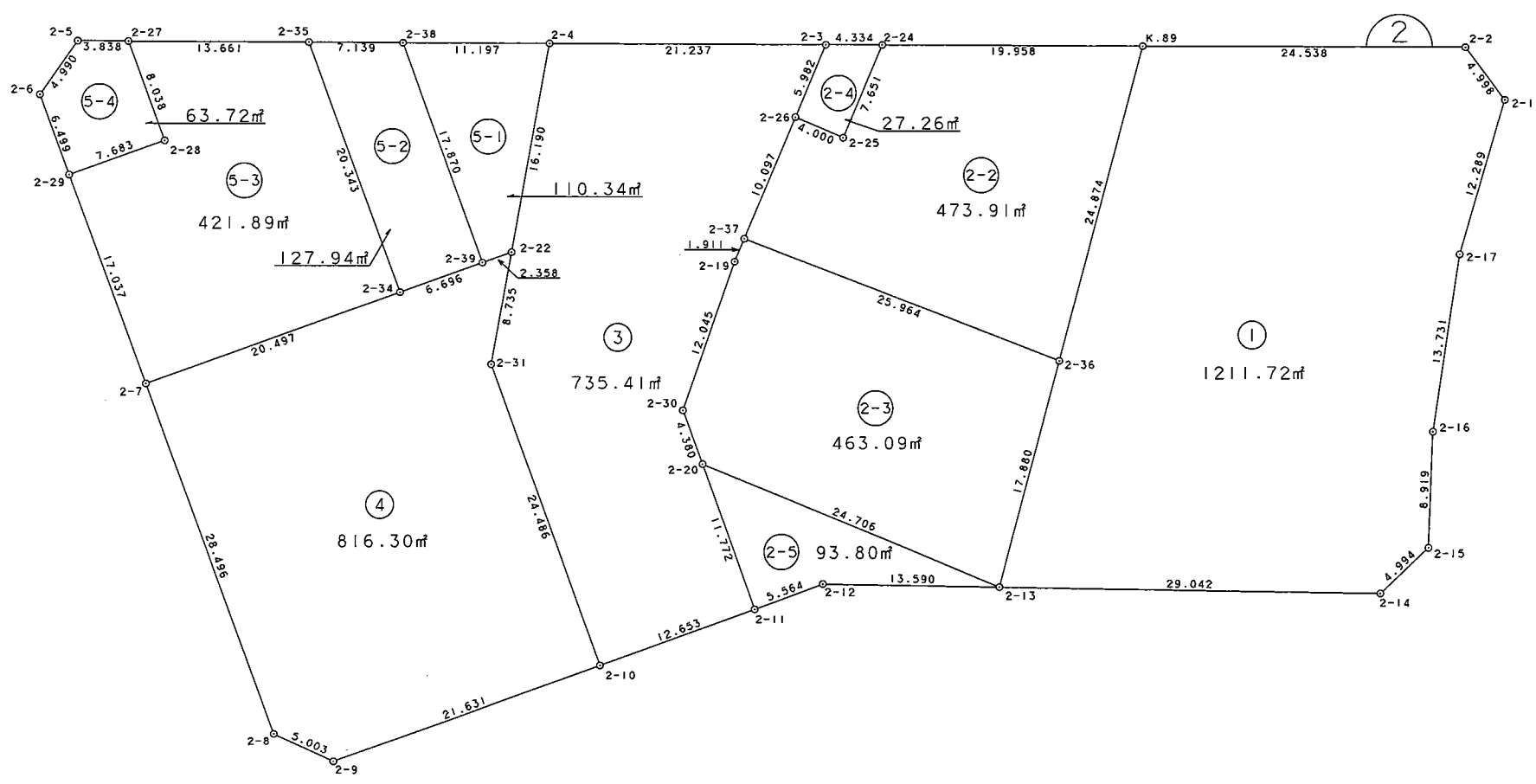


S = 1 : 500



面積（座標法）計算書

地番 = 2B1
測点名

	[1] X (i)	[2] X (i+1)-X (i-1)	[3] Y (i)	[4] Y (i+1)-Y (i-1)	[2]*[3]	[1]*[4]	方向角	夾角	距離
2-1	36149.502	12.367	-36781.451	-9.854	-454876.204517	-356217.192708	283-07-37	127-04-05	4.998
2-2	36150.637	-14.567	-36786.318	-23.723	535866.294306	-857601.561551	230-12-53	127-05-16	24.538
K. 89	36134.935	-38.194	-36805.174	-8.235	1405736.815756	-297571.189725	154-43-22	104-30-29	24.874
2-36	36112.443	-38.660	-36794.553	18.256	1422477.418980	659268.759408	154-43-19	179-59-57	17.880
2-13	36096.275	2.131	-36786.918	30.187	-78392.922258	1089638.253425	50-56-37	76-13-18	29.042
2-14	36114.574	23.260	-36764.366	23.122	-855139.153160	835041.180028	6-33-16	135-36-39	4.994
2-15	36119.535	11.996	-36763.796	-4.912	-441018.496816	-177419.155920	322-04-21	135-31-05	8.919
2-16	36126.570	18.735	-36769.278	-12.668	-688872.423330	-457651.388760	328-26-32	186-22-11	13.731
2-17	36138.270	22.932	-36776.464	-12.173	-843357.872448	-439911.160710	336-03-32	187-37-00	12.289
合計				倍面積	2423.456513	-2423.456513			141.265
				面積	1211.7282565	1211.7282565			
				坪數	366.54	366.54			

面積（座標法）計算書

地番 = 2B2-2
測点名

	[1] X(i)	[2] X(i+1)-X(i-1)	[3] Y(i)	[4] Y(i+1)-Y(i-1)	[2]*[3]	[1]*[4]	方向角	夾角	距離
K. 89	36134.935	9.730	-36805.174	-25.966	-358114.343020	-938279.722210	230-15-02	75-31-40	19.958
2-24	36122.173	-20.074	-36820.519	-13.093	739135.098406	-472947.611089	162-52-55	112-37-53	7.651
2-25	36114.861	-8.489	-36818.267	-1.571	312550.268563	-56736.446631	252-53-16	270-00-21	4.000
2-26	36113.684	-10.827	-36822.090	-0.851	398672.768430	-30732.745084	162-52-56	89-59-40	10.097
2-37	36104.034	-1.241	-36819.118	27.537	45692.525438	994196.784258	71-06-11	88-13-15	25.964
2-36	36112.443	30.901	-36794.553	13.944	-1136988.482253	503551.905192	334-43-22	83-37-11	24.874
合計				倍面積	947.835564	-947.835564			92.544
				面積	473.9177820	473.9177820			
				坪数	143.36	143.36			

面積（座標法）計算書

地番 = 2B2-3
測点名

	[1] X(i)	[2] X(i+1)-X(i-1)	[3] Y(i)	[4] Y(i+1)-Y(i-1)	[2]*[3]	[1]*[4]	方向角	夾角	距離
2-36	36112.443	7.759	-36794.553	-32.200	-285488.936727	-1162820.664600	251-06-11	96-22-52	25.964
2-37	36104.034	-10.236	-36819.118	-24.003	376880.491848	-866605.128102	162-54-06	91-47-55	1.911
2-19	36102.207	-13.077	-36818.556	4.865	481476.256812	175637.237055	159-04-07	176-10-01	12.045
2-30	36090.957	-13.436	-36814.253	8.099	494636.303308	292300.660743	119-56-11	140-52-04	4.380
2-20	36088.771	5.318	-36810.457	27.335	-195758.010326	986486.555285	72-19-06	132-22-55	24.706
2-13	36096.275	23.672	-36786.918	15.904	-870819.922896	574075.157600	334-43-19	82-24-13	17.880
合計				倍面積	926.182019	-926.182019			86.886
				面積	463.0910095	463.0910095			
				坪数	140.08	140.08			

面積（座標法）計算書

地番 = 2B2-4
測点名

	[1] X(i)	[2] X(i+1)-X(i-1)	[3] Y(i)	[4] Y(i+1)-Y(i-1)	[2]*[3]	[1]*[4]	方向角	夾角	距離
2-3	36119.401	-8.489	-36823.851	-1.571	312597.671139	-56743.578971	162-52-47	112-38-16	5.982
2-26	36113.684	-4.540	-36822.090	5.584	167172.288600	201658.811456	72-53-16	90-00-29	4.000
2-25	36114.861	8.489	-36818.267	1.571	-312550.268563	56736.446631	342-52-55	89-59-39	7.651
2-24	36122.173	4.540	-36820.519	-5.584	-167165.156260	-201706.214032	230-14-31	67-21-36	4.334
合計				倍面積	54.534916	-54.534916			21.967
				面積	27.2674580	27.2674580			
				坪数	8.24	8.24			

面積（座標法）計算書

地番 = 2B2-5
測点名

	[1] X(i)	[2] X(i+1)-X(i-1)	[3] Y(i)	[4] Y(i+1)-Y(i-1)	[2]*[3]	[1]*[4]	方向角	夾角	距離
2-20	36088.771	-13.376	-36810.457	-13.336	492376.672832	-481279.850056	119-55-16	47-36-10	11.772
2-11	36082.899	-1.050	-36800.254	12.979	38640.266700	468319.946121	29-55-44	90-00-28	5.564
2-12	36087.721	13.376	-36797.478	13.336	-492203.065728	481265.847256	50-59-28	201-03-44	13.590
2-13	36096.275	1.050	-36786.918	-12.979	-38626.263900	-468493.553225	252-19-06	21-19-38	24.706
合計				倍面積	187.609904	-187.609904			55.632
				面積	93.8049520	93.8049520			
				坪數	28.37	28.37			

面積（座標法）計算書

地番 = 2B3
測点名

	[1] X(i)	[2] X(i+1)-X(i-1)	[3] Y(i)	[4] Y(i+1)-Y(i-1)	[2]*[3]	[1]*[4]	方向角	夾角	距離
2-3	36119.401	-7.874	-36823.851	-18.079	289951.002774	-653002.650679	230-12-35	67-19-48	21.237
2-4	36105.810	-27.643	-36840.169	-8.278	1018372.791667	-298883.895180	150-13-25	100-00-50	16.190
2-22	36091.758	-21.634	-36832.129	12.378	796826.278786	446743.780524	150-13-27	180-00-02	8.735
2-31	36084.176	-19.817	-36827.791	25.548	729816.334247	921878.528448	119-58-43	149-45-16	24.486
2-10	36071.941	-1.277	-36806.581	27.537	47002.003937	993313.039317	30-00-06	90-01-23	12.653
2-11	36082.899	16.830	-36800.254	-3.876	-619348.274820	-139857.316524	299-55-16	89-55-10	11.772
2-20	36088.771	8.058	-36810.457	-13.999	-296618.662506	-505206.705229	299-56-11	180-00-55	4.380
2-30	36090.957	13.436	-36814.253	-8.099	-494636.303308	-292300.660743	339-04-07	219-07-56	12.045
2-19	36102.207	13.077	-36818.556	-4.865	-481476.256812	-175637.237055	342-54-06	183-49-59	1.911
2-37	36104.034	11.477	-36819.118	-3.534	-422573.017286	-127591.656156	342-52-56	179-58-50	10.097
2-26	36113.684	15.367	-36822.090	-4.733	-565845.057030	-170926.066372	342-52-47	179-59-51	5.982
合計				倍面積	1470.839649	-1470.839649			129.488
				面積	735.4198245	735.4198245			
				坪數	222.46	222.46			

面積 (座標法) 計算書

地番 = 2B4
測点名

	[1] X(i)	[2] X(i+1)-X(i-1)	[3] Y(i)	[4] Y(i+1)-Y(i-1)	[2]*[3]	[1]*[4]	方向角	夾角	距離
2-22	36091.758	5.540	-36832.129	-5.517	-204049.994660	-199118.228886	210-00-04	59-46-37	2.358
2-39	36089.716	-7.840	-36833.308	-4.528	288773.134720	-163414.234048	210-00-41	180-00-37	6.696
2-34	36083.918	-23.547	-36836.657	-13.601	867392.762379	-490777.368718	210-00-40	179-59-59	20.497
2-7	36066.169	-32.001	-36846.909	14.424	1179137.934909	520218.421656	120-00-33	89-59-53	28.496
2-8	36051.917	-12.959	-36822.233	29.509	477179.317447	1063856.018753	75-01-20	135-00-47	5.003
2-9	36053.210	20.024	-36817.400	15.652	-737231.617600	564304.842920	30-00-38	134-59-18	21.631
2-10	36071.941	30.966	-36806.581	-10.391	-1139752.587246	-374823.538931	299-58-43	89-58-05	24.486
2-31	36084.176	19.817	-36827.791	-25.548	-729816.334247	-921878.528448	330-13-27	210-14-44	8.735
合計				倍面積	1632.615702	-1632.615702			117.902
				面積	816.3078510	816.3078510			
				坪數	246.93	246.93			

面積（座標法）計算書

地番 = 2B5-1
測点名

	[1] X(i)	[2] X(i+1)-X(i-1)	[3] Y(i)	[4] Y(i+1)-Y(i-1)	[2]*[3]	[1]*[4]	方向角	夾角	距離
2-4	36105.810	6.897	-36840.169	-16.653	-254086.645593	-601270.053930	230-16-58	80-03-33	11.197
2-38	36098.655	-16.094	-36848.782	6.861	593044.297508	247672.871955	120-00-51	69-43-53	17.870
2-39	36089.716	-6.897	-36833.308	16.653	254039.325276	601002.040548	30-00-04	89-59-13	2.358
2-22	36091.758	16.094	-36832.129	-6.861	-592776.284126	-247625.551638	330-13-25	120-13-21	16.190
合計				倍面積	220.693065	-220.693065			47.615
				面積	110.3465325	110.3465325			
				坪數	33.37	33.37			

面積（座標法）計算書

地番 = 2B5-2
測点名

	[1] X(i)	[2] X(i+1)-X(i-1)	[3] Y(i)	[4] Y(i+1)-Y(i-1)	[2]*[3]	[1]*[4]	方向角	夾角	距離
2-38	36098.655	4.377	-36848.782	-20.965	-161287.118814	-756808.302075	230-16-47	110-15-56	7.139
2-35	36094.093	-14.737	-36854.273	12.125	543121.421201	437640.877625	120-00-39	69-43-52	20.343
2-34	36083.918	-4.377	-36836.657	20.965	161234.047689	756499.340870	30-00-41	90-00-02	6.696
2-39	36089.716	14.737	-36833.308	-12.125	-542812.459996	-437587.806500	300-00-51	90-00-10	17.870
合計				倍面積	255.890080	-255.890080			52.048
				面積	127.9450400	127.9450400			
				坪数	38.70	38.70			

面積（座標法）計算書

地番 = 2B5-3
測点名

	[1] X(i)	[2] X(i+1)-X(i-1)	[3] Y(i)	[4] Y(i+1)-Y(i-1)	[2]*[3]	[1]*[4]	方向角	夾角	距離
2-27	36085.363	-12.750	-36864.780	-3.546	470025.945000	-127958.697198	120-00-24	69-43-44	8.038
2-28	36081.343	-10.673	-36857.819	3.118	393383.502187	112501.627474	210-00-44	270-00-20	7.683
2-29	36074.690	-15.174	-36861.662	10.910	559338.859188	393574.867900	120-00-35	89-59-51	17.037
2-7	36066.169	9.228	-36846.909	25.005	-340023.276252	901834.555845	30-00-40	90-00-05	20.497
2-34	36083.918	27.924	-36836.657	-7.364	-1028626.810068	-265721.972152	300-00-39	89-59-59	20.343
2-35	36094.093	1.445	-36854.273	-28.123	-53254.424485	-1015074.177439	230-16-40	110-16-01	13.661
合計				倍面積	843.795570	-843.795570			87.259
				面積	421.8977850	421.8977850			
				坪數	127.62	127.62			

面積（座標法）計算書

地番 = 2B5-4
測点名

	[1] X(i)	[2] X(i+1)-X(i-1)	[3] Y(i)	[4] Y(i+1)-Y(i-1)	[2]*[3]	[1]*[4]	方向角	夾角	距離
2-5	36082.911	-7.422	-36867.732	-2.510	273632.306904	-90568.106610	174-55-04	124-37-54	4.990
2-6	36077.941	-8.221	-36867.290	6.070	303085.991090	218993.101870	120-00-46	125-05-42	6.499
2-29	36074.690	3.402	-36861.662	9.471	-125403.374124	341663.388990	30-00-44	89-59-58	7.683
2-28	36081.343	10.673	-36857.819	-3.118	-393383.502187	-112501.627474	300-00-24	89-59-40	8.038
2-27	36085.363	1.568	-36864.780	-9.913	-57803.975040	-357714.203419	230-17-10	110-16-46	3.838
合計				倍面積	127.446643	-127.446643			31.048
				面積	63.7233215	63.7233215			
				坪数	19.27	19.27			