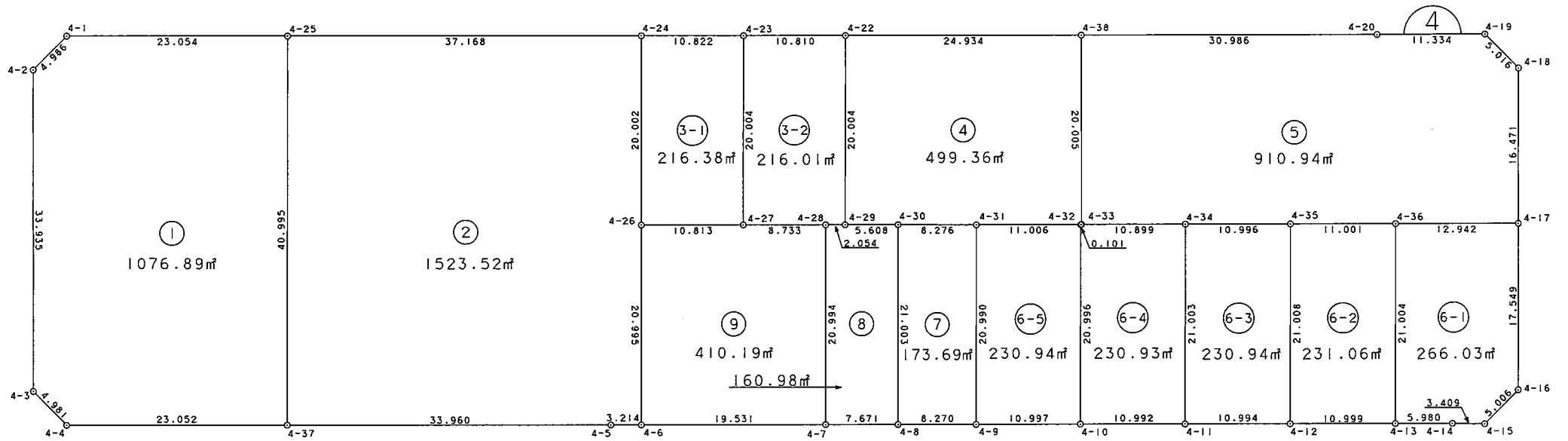


S=1:600



面積（座標法）計算書

地番 = 4B1
測点名

	[1] X(i)	[2] X(i+1)-X(i-1)	[3] Y(i)	[4] Y(i+1)-Y(i-1)	[2]*[3]	[1]*[4]	方向角	夾角	距離
4-1	36080.878	10.240	-36790.419	-24.785	-376733.890560	-894264.561230	255-04-39	135-05-10	4.986
4-2	36079.594	-30.679	-36795.237	-21.774	1128841.075923	-785597.079756	209-58-40	134-54-01	33.935
4-3	36050.199	-34.209	-36812.193	-15.678	1259308.310337	-565195.019922	165-07-56	135-09-16	4.981
4-4	36045.385	-16.345	-36810.915	21.239	601674.405675	765567.932015	120-00-50	134-52-54	23.052
4-37	36033.854	23.969	-36790.954	40.463	-881842.376426	1458037.834402	30-00-26	89-59-36	40.995
4-25	36069.354	47.024	-36770.452	0.535	-1729093.734848	19297.104390	299-59-29	89-59-03	23.054
合計				倍面積	2153.790101	-2153.790101			131.003
				面積	1076.8950505	1076.8950505			
				坪数	325.76	325.76			

面積（座標法）計算書

地番 = 4B2
測点名

	[1] X(i)	[2] X(i+1)-X(i-1)	[3] Y(i)	[4] Y(i+1)-Y(i-1)	[2]*[3]	[1]*[4]	方向角	夾角	距離
4-25	36069.354	-16.916	-36770.452	-52.690	622008.966032	-1900494.262260	210-00-26	90-00-25	40.995
4-37	36033.854	-52.475	-36790.954	8.911	1930605.311150	321097.672994	119-59-25	89-58-59	33.960
4-5	36016.879	-18.589	-36761.541	32.192	683360.285649	1159455.368768	120-08-50	180-09-25	3.214
4-6	36015.265	16.573	-36758.762	13.269	-609202.962626	477886.551285	29-58-33	89-49-43	20.995
4-26	36033.452	35.505	-36748.272	20.498	-1304747.397360	738613.699096	30-01-24	180-02-51	20.002
4-24	36050.770	35.902	-36738.264	-22.180	-1318977.154128	-799606.078600	300-00-01	89-58-37	37.168
合計				倍面積	3047.048717	-3047.048717			156.334
				面積	1523.5243585	1523.5243585			
				坪数	460.86	460.86			

面積（座標法）計算書

地番 = 4B3-1
測点名

	[1] X(i)	[2] X(i+1)-X(i-1)	[3] Y(i)	[4] Y(i+1)-Y(i-1)	[2]*[3]	[1]*[4]	方向角	夾角	距離
4-24	36050.770	-11.908	-36738.264	-19.381	437479.247712	-698699.973370	210-01-24	90-01-49	20.002
4-26	36033.452	-22.725	-36748.272	-0.644	835104.481200	-23205.543088	120-00-11	89-58-47	10.813
4-27	36028.045	11.908	-36738.908	19.381	-437486.916464	698259.540145	30-03-00	90-02-49	20.004
4-23	36045.360	22.725	-36728.891	0.644	-834664.047975	23213.211840	299-59-35	89-56-35	10.822
合計				倍面積	432.764473	-432.764473			61.641
				面積	216.3822365	216.3822365			
				坪数	65.45	65.45			

面積（座標法）計算書

地番 = 4B3-2
測点名

	[1] X(i)	[2] X(i+1)-X(i-1)	[3] Y(i)	[4] Y(i+1)-Y(i-1)	[2]*[3]	[1]*[4]	方向角	夾角	距離
4-23	36045.360	-11.912	-36728.891	-19.380	437514.549592	-698559.076800	210-03-00	90-03-45	20.004
4-27	36028.045	-21.680	-36738.908	-2.453	796499.525440	-88376.794385	119-59-18	89-56-18	8.733
4-28	36023.680	-5.392	-36731.344	9.343	198055.406848	336569.242240	119-59-51	180-00-33	2.054
4-29	36022.653	16.277	-36729.565	11.816	-597847.129505	425643.667848	30-06-56	90-07-05	20.004
4-22	36039.957	22.707	-36719.528	0.674	-833790.322296	24290.931018	299-59-15	89-52-19	10.810
合計				倍面積	432.030079	-432.030079			61.605
				面積	216.0150395	216.0150395			
				坪數	65.34	65.34			

面積（座標法）計算書

地番 = 4B4
測点名

	[1] X(i)	[2] X(i+1)-X(i-1)	[3] Y(i)	[4] Y(i+1)-Y(i-1)	[2]*[3]	[1]*[4]	方向角	夾角	距離
4-22	36039.957	-4.837	-36719.528	-31.630	177612.356936	-1139943.839910	210-06-56	90-06-54	20.004
4-29	36022.653	-20.103	-36729.565	-5.177	738374.445195	-186489.274581	119-56-20	89-49-24	5.608
4-30	36019.854	-6.946	-36724.705	12.022	255089.800930	433030.684788	120-04-19	180-07-59	8.276
4-31	36015.707	-9.650	-36717.543	16.693	354324.289950	601210.196951	120-00-04	179-55-45	11.006
4-32	36010.204	-5.550	-36708.012	9.620	203729.466600	346418.162480	117-50-17	177-50-13	0.101
4-33	36010.157	17.286	-36707.923	10.077	-634533.156978	362874.352089	29-57-08	92-06-51	20.005
4-38	36027.490	29.800	-36697.935	-11.605	-1093598.463000	-418099.021450	300-00-02	90-02-54	24.934
合計				倍面積	998.739633	-998.739633			89.934
				面積	499.3698165	499.3698165			
				坪数	151.05	151.05			

面積（座標法）計算書

地番 = 4B5
測点名

	[1] X(i)	[2] X(i+1)-X(i-1)	[3] Y(i)	[4] Y(i+1)-Y(i-1)	[2]*[3]	[1]*[4]	方向角	夾角	距離
4-38	36027.490	-1.836	-36697.935	-36.820	67377.408660	-1326532.181800	209-57-08	89-56-36	20.005
4-33	36010.157	-22.783	-36707.923	-0.549	836316.609709	-19769.576193	120-00-06	90-02-58	10.899
4-34	36004.707	-10.942	-36698.484	18.965	401554.811928	682829.268255	119-57-53	179-57-47	10.996
4-35	35999.215	-10.995	-36688.958	19.052	403395.093210	685857.044180	120-00-51	180-02-58	11.001
4-36	35993.712	-11.973	-36679.432	20.735	439162.839336	746329.618320	119-59-39	179-58-48	12.942
4-17	35987.242	7.785	-36668.223	19.461	-285462.116055	700347.716562	30-03-57	90-04-18	16.471
4-18	36001.497	19.097	-36659.971	6.943	-700095.466187	249958.393671	344-52-20	134-48-23	5.016
4-19	36006.339	10.496	-36661.280	-11.132	-384796.794880	-400822.565748	299-55-27	135-03-07	11.334
4-20	36011.993	21.151	-36671.103	-36.655	-775630.499553	-1320019.603415	300-00-32	180-05-05	30.986
合計				倍面積	1821.886168	-1821.886168			129.650
				面積	910.9430840	910.9430840			
				坪数	275.56	275.56			

面積（座標法）計算書

地番 = 4B6-1
測点名

	[1] X(i)	[2] X(i+1)-X(i-1)	[3] Y(i)	[4] Y(i+1)-Y(i-1)	[2]*[3]	[1]*[4]	方向角	夾角	距離
4-36	35993.712	-11.708	-36679.432	-21.732	429442.789856	-782215.349184	210-03-58	90-04-19	21.004
4-13	35975.534	-21.165	-36689.955	-5.343	776542.897575	-192217.278162	119-58-10	89-54-12	5.980
4-14	35972.547	-4.737	-36684.775	8.106	173775.779175	291593.465982	120-52-59	180-54-49	3.409
4-15	35970.797	-0.501	-36681.849	7.774	18377.606349	279636.975878	75-33-11	134-40-12	5.006
4-16	35972.046	16.445	-36677.001	13.626	-603153.281445	490155.098796	30-00-47	134-27-36	17.549
4-17	35987.242	21.666	-36668.223	-2.431	-794453.719518	-87484.985302	299-59-39	89-58-52	12.942
合計				倍面積	532.071992	-532.071992			65.890
				面積	266.0359960	266.0359960			
				坪數	80.47	80.47			

面積（座標法）計算書

地番 = 4B6-2
測点名

	[1] X(i)	[2] X(i+1)-X(i-1)	[3] Y(i)	[4] Y(i+1)-Y(i-1)	[2]*[3]	[1]*[4]	方向角	夾角	距離
4-35	35999.215	-12.679	-36688.958	-20.049	465179.298482	-721748.261535	210-03-38	90-02-47	21.008
4-12	35981.033	-23.681	-36699.481	-0.997	869080.409561	-35873.089901	119-59-46	89-56-08	10.999
4-13	35975.534	12.679	-36689.955	20.049	-465191.939445	721273.481166	30-03-58	90-04-12	21.004
4-36	35993.712	23.681	-36679.432	0.997	-868605.629192	35885.730864	300-00-51	89-56-53	11.001
合計				倍面積	462.139406	-462.139406			64.012
				面積	231.0697030	231.0697030			
				坪數	69.89	69.89			

面積（座標法）計算書

地番 = 486-3
測点名

	[1] X(i)	[2] X(i+1)-X(i-1)	[3] Y(i)	[4] Y(i+1)-Y(i-1)	[2]*[3]	[1]*[4]	方向角	夾角	距離
4-34	36004.707	-12.687	-36698.484	-20.045	465593.666508	-721714.351815	210-03-19	90-05-26	21.003
4-11	35986.528	-23.674	-36709.003	-0.997	869048.937022	-35878.568416	119-59-19	89-56-00	10.994
4-12	35981.033	12.687	-36699.481	20.045	-465606.315447	721239.806485	30-03-38	90-04-19	21.008
4-35	35999.215	23.674	-36688.958	0.997	-868574.391692	35891.217355	299-57-53	89-54-15	10.996
合計				倍面積	461.896391	-461.896391			64.001
				面積	230.9481955	230.9481955			
				坪數	69.86	69.86			

面積 (座標法) 計算書

地番 = 4B6-4
測点名

	[1] X(i)	[2] X(i+1)-X(i-1)	[3] Y(i)	[4] Y(i+1)-Y(i-1)	[2]*[3]	[1]*[4]	方向角	夾角	距離
4-32	36010.204	-18.130	-36708.012	-10.598	665516.257560	-381636.141992	210-02-03	92-11-46	20.996
4-10	35992.027	-23.676	-36718.521	-0.991	869347.703196	-35668.098757	120-01-01	89-58-58	10.992
4-11	35986.528	12.680	-36709.003	20.037	-465470.158040	721062.061536	30-03-19	90-02-18	21.003
4-34	36004.707	23.629	-36698.484	1.080	-867148.478436	38885.083560	300-00-06	89-56-47	10.899
4-33	36010.157	5.497	-36707.923	-9.528	-201783.452731	-343104.775896	297-50-17	177-50-11	0.101
合計				倍面積	461.871549	-461.871549			63.991
				面積	230.9357745	230.9357745			
				坪數	69.85	69.85			

面積 (座標法) 計算書

地番 = 4B6-5
測点名

	[1] X(i)	[2] X(i+1)-X(i-1)	[3] Y(i)	[4] Y(i+1)-Y(i-1)	[2]*[3]	[1]*[4]	方向角	夾角	距離
4-31	36015.707	-12.673	-36717.543	-20.029	465321.422439	-721358.595503	210-00-35	90-00-31	20.990
4-9	35997.531	-23.680	-36728.041	-0.978	869720.010880	-35205.585318	120-02-04	90-01-29	10.997
4-10	35992.027	12.673	-36718.521	20.029	-465333.816633	720884.308783	30-02-03	89-59-59	20.996
4-32	36010.204	23.680	-36708.012	0.978	-869245.724160	35217.979512	300-00-04	89-58-01	11.006
合計				倍面積	461.892526	-461.892526			63.989
				面積	230.9462630	230.9462630			
				坪数	69.86	69.86			

面積 (座標法) 計算書

地番 = 4B7
測点名

	[1] X(i)	[2] X(i+1)-X(i-1)	[3] Y(i)	[4] Y(i+1)-Y(i-1)	[2]*[3]	[1]*[4]	方向角	夾角	距離
4-30	36019.854	-14.043	-36724.705	-17.661	515725.032315	-636146.641494	209-59-34	89-55-15	21.003
4-8	36001.664	-22.323	-36735.204	-3.336	820039.958892	-120101.551104	119-59-05	89-59-31	8.270
4-9	35997.531	14.043	-36728.041	17.661	-515771.879763	635752.394991	30-00-35	90-01-30	20.990
4-31	36015.707	22.323	-36717.543	3.336	-819645.712389	120148.398552	300-04-19	90-03-44	8.276
合計				倍面積	347.399055	-347.399055			58.539
				面積	173.6995275	173.6995275			
				坪數	52.54	52.54			

面積（座標法）計算書

地番 = 4B8
測点名

	[1] X(i)	[2] X(i+1)-X(i-1)	[3] Y(i)	[4] Y(i+1)-Y(i-1)	[2]*[3]	[1]*[4]	方向角	夾角	距離
4-28	36023.680	-17.151	-36731.344	-12.281	629979.280944	-442406.814080	210-00-59	90-01-08	20.994
4-7	36005.502	-22.016	-36741.846	-3.860	808908.481536	-138981.237720	120-01-15	90-00-16	7.671
4-8	36001.664	14.352	-36735.204	17.141	-527223.647808	617104.522624	29-59-34	89-58-19	21.003
4-30	36019.854	20.989	-36724.705	5.639	-770814.833245	203115.956706	299-56-20	89-56-46	5.608
4-29	36022.653	3.826	-36729.565	-6.639	-140527.315690	-239154.393267	299-59-51	180-03-31	2.054
合計				倍面積	321.965737	-321.965737			57.330
				面積	160.9828685	160.9828685			
				坪數	48.69	48.69			

面積 (座標法) 計算書

地番 = 4B9
測点名

	[1] X(i)	[2] X(i+1)-X(i-1)	[3] Y(i)	[4] Y(i+1)-Y(i-1)	[2]*[3]	[1]*[4]	方向角	夾角	距離
4-26	36033.452	-12.780	-36748.272	-19.854	469642.916160	-715408.156008	209-58-33	89-58-22	20.995
4-6	36015.265	-27.950	-36758.762	6.426	1027407.397900	231434.092890	119-59-28	90-00-55	19.531
4-7	36005.502	8.415	-36741.846	27.418	-309182.634090	987198.853836	30-00-59	90-01-31	20.994
4-28	36023.680	22.543	-36731.344	2.938	-828034.687792	105837.571840	299-59-18	89-58-19	8.733
4-27	36028.045	9.772	-36738.908	-16.928	-359012.608976	-609882.745760	300-00-11	180-00-53	10.813
合計				倍面積	820.383202	-820.383202			81.066
				面積	410.1916010	410.1916010			
				坪數	124.08	124.08			