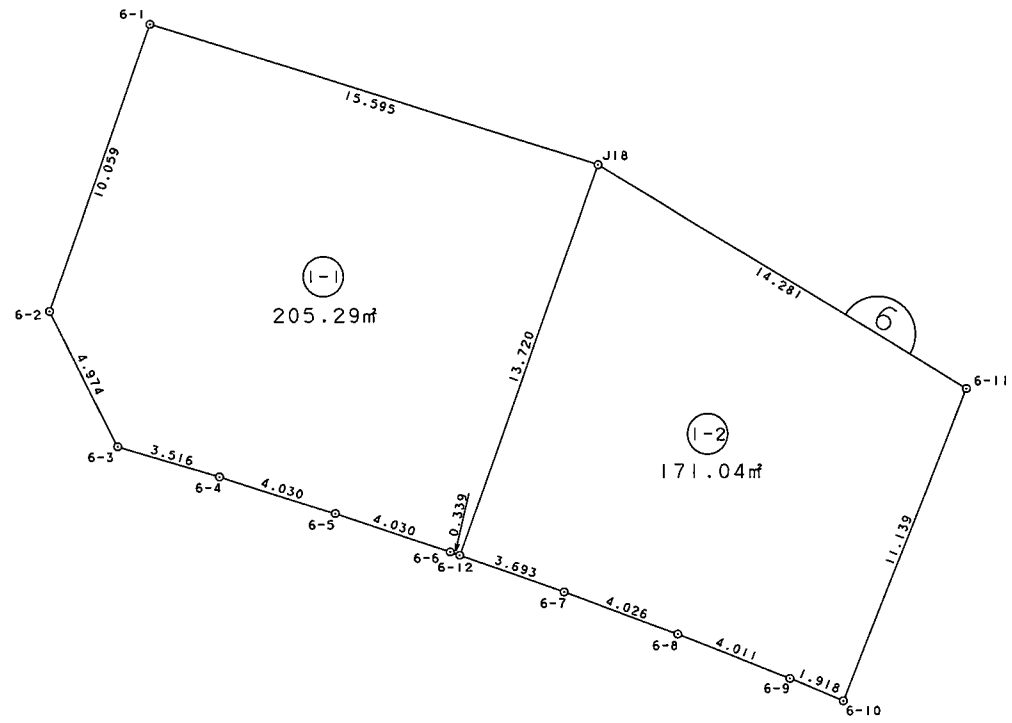


S=1:250



面積（座標法）計算書

地番 = 6B1-1
測点名

	[1] X(i)	[2] X(i+1)-X(i-1)	[3] Y(i)	[4] Y(i+1)-Y(i-1)	[2]*[3]	[1]*[4]	方向角	夾角	距離
6-1	35938.106	4.902	-36618.760	-18.185	-179505.161520	-653534.457610	229-14-13	91-53-16	10.059
6-2	35931.538	-11.534	-36626.379	-7.895	422448.655386	-283679.492510	183-10-52	133-56-39	4.974
6-3	35926.572	-7.519	-36626.655	2.141	275395.818945	76918.790652	136-34-03	133-23-11	3.516
6-4	35924.019	-5.536	-36624.238	5.126	202751.781568	184146.521394	137-45-21	181-11-18	4.030
6-5	35921.036	-6.010	-36621.529	5.370	220095.389290	192895.963320	138-40-54	180-55-33	4.030
6-6	35918.009	-3.285	-36618.868	2.881	120292.981380	103479.783929	139-32-43	180-51-49	0.339
6-12	35917.751	8.627	-36618.648	10.674	-315909.076296	383386.074174	49-38-18	90-05-35	13.720
J18	35926.636	20.355	-36608.194	-0.112	-745159.788870	-4023.783232	317-20-57	87-42-39	15.595
合計				倍面積	410.599883	-410.599883			56.263
				面積	205.2999415	205.2999415			
				坪數	62.10	62.10			

面積（座標法）計算書

地番 = 6B1-2
測点名

	[1] X(i)	[2] X(i+1)-X(i-1)	[3] Y(i)	[4] Y(i+1)-Y(i-1)	[2]*[3]	[1]*[4]	方向角	夾角	距離
J18	35926.636	3.640	-36608.194	-17.314	-133253.826160	-622033.775704	229-38-18	78-20-53	13.720
6-12	35917.751	-11.699	-36618.648	-8.063	428401.562952	-289604.826313	139-38-46	90-00-28	3.693
6-7	35914.937	-5.925	-36616.257	4.947	216951.322725	177671.193339	140-35-36	180-56-50	4.026
6-8	35911.826	-6.249	-36613.701	5.054	228799.017549	181498.368604	141-28-43	180-53-07	4.011
6-9	35908.688	-4.663	-36611.203	3.661	170718.039589	131461.706768	142-40-12	181-11-29	1.918
6-10	35907.163	5.423	-36610.040	9.869	-198536.246920	354367.791647	51-24-28	88-44-16	11.139
6-11	35914.111	19.473	-36601.334	1.846	-712737.776982	66297.448906	331-17-25	99-52-57	14.281
合計				倍面積	342.092753	-342.092753			52.788
				面積	171.0463765	171.0463765			
				坪数	51.74	51.74			