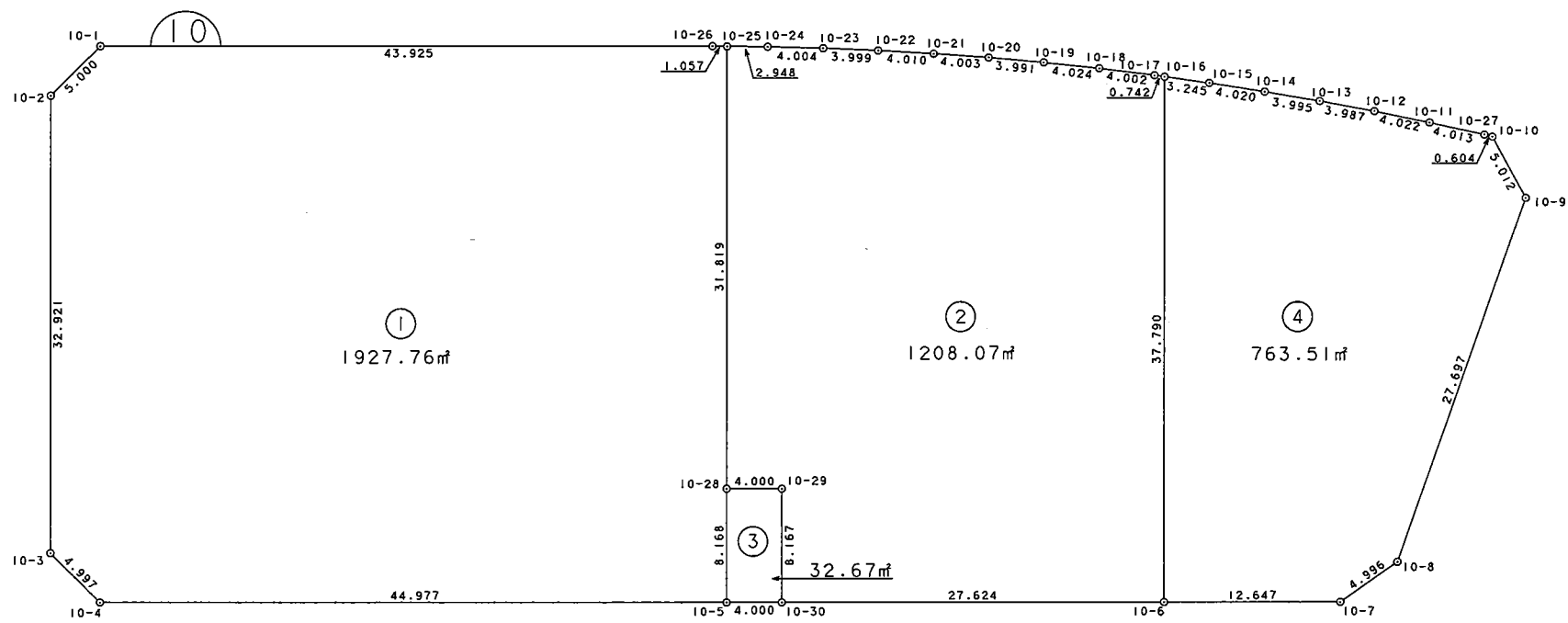


S = 1 : 500



面積 (座標法) 計算書

地番 = 10B1
測点名

	[1] X(i)	[2] X(i+1)-X(i-1)	[3] Y(i)	[4] Y(i+1)-Y(i-1)	[2]*[3]	[1]*[4]	方向角	夾角	距離
10-1	35983.261	20.664	-36729.344	-42.862	-758975.164416	-1542314.532982	254-51-27	134-50-47	5.000
10-2	35981.955	-29.813	-36734.170	-21.292	1095155.810210	-766127.785860	210-00-41	135-09-14	32.921
10-3	35953.448	-33.336	-36750.636	-15.180	1225119.201696	-545773.340640	165-05-16	135-04-35	4.997
10-4	35948.619	-27.318	-36749.350	40.237	1003918.743300	1446464.582703	120-00-03	134-54-47	44.977
10-5	35926.130	-15.416	-36710.399	43.036	565927.510984	1546116.930680	30-00-31	90-00-28	8.168
10-28	35933.203	34.625	-36706.314	20.002	-1270956.122250	718735.926406	30-00-55	180-00-24	31.819
10-25	35960.755	28.088	-36690.397	15.006	-1030559.870936	539627.089530	300-28-16	90-27-21	1.057
10-26	35961.291	22.506	-36691.308	-38.947	-825774.577848	-1400584.400577	300-00-40	179-32-24	43.925
合計				倍面積	3855.530740	-3855.530740			172.864
				面積	1927.7653700	1927.7653700			
				坪数	583.14	583.14			

面積 (座標法) 計算書

地番 = 10B2
測点名

	[1] X(i)	[2] X(i+1)-X(i-1)	[3] Y(i)	[4] Y(i+1)-Y(i-1)	[2]*[3]	[1]*[4]	方向角	夾角	距離
10-25	35960.755	-26.058	-36690.397	-18.458	956078.365026	-663763.615790	210-00-55	89-33-42	31.819
10-28	35933.203	-29.553	-36706.314	-12.453	1084781.697642	-447476.176959	120-00-47	89-59-52	4.000
10-29	35931.202	-9.073	-36702.850	-0.621	333004.958050	-22313.276442	210-00-43	269-59-56	8.167
10-30	35924.130	-20.885	-36706.935	19.838	766624.337475	712662.890940	120-00-07	89-59-24	27.624
10-6	35910.317	18.910	-36683.012	42.826	-693675.756920	1537895.235842	30-00-49	90-00-42	37.790
10-16	35943.040	33.181	-36664.109	18.319	-1216551.800729	658440.549760	308-06-19	98-05-30	0.742
10-17	35943.498	2.871	-36664.693	-3.777	-105264.333603	-135758.591946	307-04-44	178-58-25	4.002
10-18	35945.911	4.785	-36667.886	-6.444	-175455.834510	-231635.450484	306-06-55	179-02-11	4.024
10-19	35948.283	4.669	-36671.137	-6.515	-171217.538653	-234203.063745	305-08-08	179-01-13	3.991
10-20	35950.580	4.546	-36674.401	-6.575	-166721.826946	-236375.063500	304-11-11	179-03-03	4.003
10-21	35952.829	4.452	-36677.712	-6.662	-163289.173824	-239517.746798	303-19-18	179-08-07	4.010
10-22	35955.032	4.344	-36681.063	-6.728	-159342.537672	-241905.455296	302-22-28	179-03-10	3.999
10-23	35957.173	4.229	-36684.440	-6.793	-155138.496760	-244257.076189	301-26-06	179-03-38	4.004
10-24	35959.261	3.582	-36687.856	-5.957	-131415.900192	-214209.317777	300-27-13	179-01-07	2.948
合計				倍面積	2416.158384	-2416.158384			141.123
				面積	1208.0791920	1208.0791920			
				坪數	365.44	365.44			

面積 (座標法) 計算書

地番 = 10B3
測点名

	[1] X(i)	[2] X(i+1)-X(i-1)	[3] Y(i)	[4] Y(i+1)-Y(i-1)	[2]*[3]	[1]*[4]	方向角	夾角	距離
10-5	35926.130	-9.073	-36710.399	-0.621	333073.450127	-22310.126730	120-00-03	89-59-32	4.000
10-30	35924.130	5.072	-36706.935	7.549	-186177.574320	271191.257370	30-00-43	90-00-40	8.167
10-29	35931.202	9.073	-36702.850	0.621	-333004.958050	22313.276442	300-00-47	90-00-04	4.000
10-28	35933.203	-5.072	-36706.314	-7.549	186174.424608	-271259.749447	210-00-31	89-59-44	8.168
合計				倍面積	65.342365	-65.342365			24.335
				面積	32.6711825	32.6711825			
				坪數	9.88	9.88			

面積 (座標法) 計算書

地番 = 10B4
測点名

	[1] X(i)	[2] X(i+1)-X(i-1)	[3] Y(i)	[4] Y(i+1)-Y(i-1)	[2]*[3]	[1]*[4]	方向角	夾角	距離
10-6	35910.317	-39.047	-36683.012	-7.951	1432361.569564	-285522.930467	120-00-12	89-59-23	12.647
10-7	35903.993	-5.864	-36672.060	15.927	215044.959840	571842.896511	84-43-02	144-42-50	4.996
10-8	35904.453	18.528	-36667.085	25.967	-679367.750880	932330.931051	49-16-52	144-33-50	27.697
10-9	35922.521	23.078	-36646.093	21.130	-845718.534254	759042.868730	1-34-40	132-17-48	5.012
10-10	35927.531	5.425	-36645.955	-0.301	-198804.305875	-10814.186831	313-23-25	131-48-45	0.604
10-27	35927.946	3.134	-36646.394	-3.390	-114849.798796	-121795.736940	312-39-25	179-16-00	4.013
10-11	35930.665	5.401	-36649.345	-5.948	-197943.112345	-213715.595420	311-49-31	179-10-06	4.022
10-12	35933.347	5.290	-36652.342	-6.013	-193890.889180	-216067.215511	310-51-02	179-01-31	3.987
10-13	35935.955	5.167	-36655.358	-6.084	-189398.234786	-218634.350220	309-49-53	178-58-51	3.995
10-14	35938.514	5.085	-36658.426	-6.195	-186408.096210	-222639.094230	308-55-53	179-06-00	4.020
10-15	35941.040	4.526	-36661.553	-5.683	-165930.188878	-204252.930320	308-02-32	179-06-39	3.245
10-16	35943.040	-30.723	-36664.109	-21.459	1126431.420807	-771301.695360	210-00-49	81-58-17	37.790
合計				倍面積	1527.039007	-1527.039007			112.028
				面積	763.5195035	763.5195035			
				坪數	230.96	230.96			