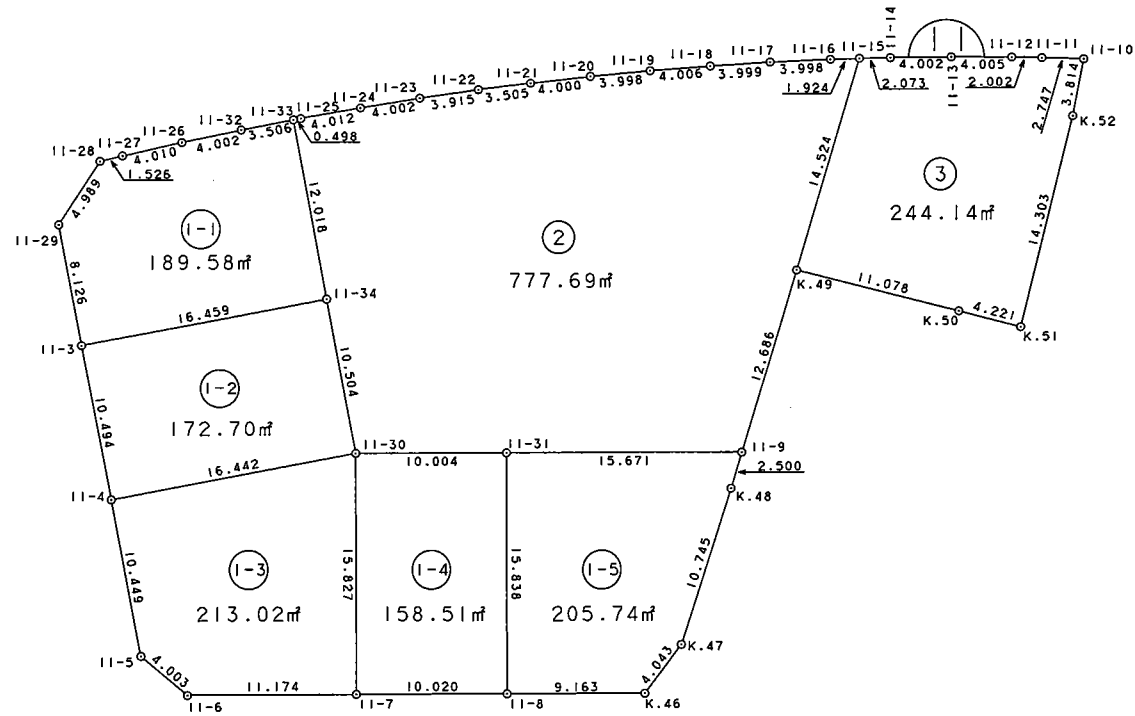


S = 1 : 500



### 面積 (座標法) 計算書

地番 = 11B1-1  
測点名

	[1] X(i)	[2] X(i+1)-X(i-1)	[3] Y(i)	[4] Y(i+1)-Y(i-1)	[2]*[3]	[1]*[4]	方向角	夾角	距離
11-3	35913.182	-17.781	-36647.747	4.580	651633.589407	164482.373560	139-17-22	90-02-51	16.459
11-34	35900.706	-4.656	-36637.012	19.861	170581.927872	713023.921866	49-24-25	90-07-03	12.018
11-33	35908.526	10.470	-36627.886	6.830	-383493.966420	245255.232580	319-05-38	89-41-13	3.506
11-32	35911.176	5.638	-36630.182	-4.958	-206520.966116	-178047.610608	318-18-08	179-12-30	4.002
11-26	35914.164	5.934	-36632.844	-5.383	-217379.296296	-193325.944812	317-16-25	178-58-17	4.010
11-27	35917.110	4.058	-36635.565	-3.766	-148667.122770	-135263.836260	316-46-45	179-30-20	1.526
11-28	35918.222	1.377	-36636.610	-6.027	-50448.611970	-216479.123994	273-02-41	136-15-56	4.989
11-29	35918.487	-5.040	-36641.592	-11.137	184673.623680	-400024.189719	229-14-31	136-11-50	8.126
合計				倍面積	379.177387	-379.177387			54.636
				面積	189.5886935	189.5886935			
				坪數	57.35	57.35			

面積 (座標法) 計算書

地番 = 11B1-2  
測点名

	[1] X(i)	[2] X(i+1)-X(i-1)	[3] Y(i)	[4] Y(i+1)-Y(i-1)	[2]*[3]	[1]*[4]	方向角	夾角	距離
11-3	35913.182	5.636	-36647.747	-18.693	-206546.702092	-671325.111126	229-19-14	90-01-52	10.494
11-4	35906.342	-19.310	-36655.705	2.758	707821.663550	99029.691236	139-19-34	90-00-20	16.442
11-30	35893.872	-5.636	-36644.989	18.693	206531.158004	670964.149296	49-24-46	90-05-12	10.504
11-34	35900.706	19.310	-36637.012	-2.758	-707460.701720	-99014.147148	319-17-22	89-52-36	16.459
合計				倍面積	345.417742	-345.417742			53.899
				面積	172.7088710	172.7088710			
				坪數	52.24	52.24			

### 面積 (座標法) 計算書

地番 = 11B1-3  
測点名

	[1] X(i)	[2] X(i+1)-X(i-1)	[3] Y(i)	[4] Y(i+1)-Y(i-1)	[2]*[3]	[1]*[4]	方向角	夾角	距離
11-4	35906.342	5.656	-36655.705	-18.637	-207324.667480	-669186.495854	229-17-47	89-58-13	10.449
11-5	35899.528	-10.756	-36663.626	-8.616	394353.961256	-309310.333248	189-59-56	140-42-09	4.003
11-6	35895.586	-13.590	-36664.321	4.942	498268.122390	177395.986012	149-42-13	139-42-17	11.174
11-7	35885.938	-1.714	-36658.684	19.332	62832.984376	693746.953416	59-54-53	90-12-40	15.827
11-30	35893.872	20.404	-36644.989	2.979	-747704.355556	106927.844688	319-19-34	79-24-41	16.442
合計				倍面積	426.044986	-426.044986			57.895
				面積	213.0224930	213.0224930			
				坪數	64.43	64.43			

面積 (座標法) 計算書

地番 = 11B1-4  
測点名

	[1] X(i)	[2] X(i+1)-X(i-1)	[3] Y(i)	[4] Y(i+1)-Y(i-1)	[2]*[3]	[1]*[4]	方向角	夾角	距離
11-30	35893.872	0.719	-36644.989	-18.716	-26347.747091	-671789.708352	239-54-53	90-02-23	15.827
11-7	35885.938	-16.606	-36658.684	-8.676	608754.106504	-311346.398088	149-56-22	90-01-29	10.020
11-8	35877.266	-0.719	-36653.665	18.716	26353.985135	671478.910456	59-51-32	89-55-10	15.838
11-31	35885.219	16.606	-36639.968	8.676	-608443.308608	311340.160044	329-52-30	90-00-58	10.004
合計				倍面積	317.035940	-317.035940			51.689
				面積	158.5179700	158.5179700			
				坪数	47.95	47.95			

### 面積 (座標法) 計算書

地番 = 11B1-5  
測点名

	[1] X(i)	[2] X(i+1)-X(i-1)	[3] Y(i)	[4] Y(i+1)-Y(i-1)	[2]*[3]	[1]*[4]	方向角	夾角	距離
11-31	35885.219	5.607	-36639.968	-21.552	-205440.300576	-773398.239888	239-51-32	89-56-30	15.838
11-8	35877.266	-15.878	-36653.665	-9.098	581986.892870	-326411.366068	149-52-22	90-00-50	9.163
K. 46	35869.341	-8.424	-36649.066	8.611	308731.731984	308870.895351	97-05-23	127-13-01	4.043
K. 47	35868.842	1.748	-36645.054	14.519	-64055.554392	520779.716998	77-55-43	160-50-20	10.745
K. 48	35871.089	2.817	-36634.547	12.941	-103199.518899	464207.762749	76-49-11	178-53-28	2.500
11-9	35871.659	14.130	-36632.113	-5.421	-517611.756690	-194460.263439	329-55-02	73-05-51	15.671
合計				倍面積	411.494297	-411.494297			57.960
				面積	205.7471485	205.7471485			
				坪數	62.23	62.23			

### 面積 (座標法) 計算書

地番 = 11B2  
測点名

	[1] X(i)	[2] X(i+1)-X(i-1)	[3] Y(i)	[4] Y(i+1)-Y(i-1)	[2]*[3]	[1]*[4]	方向角	夾角	距離
11-30	35893.872	-15.487	-36644.989	-2.956	567520.944643	-106102.285632	149-52-30	100-27-44	10.004
11-31	35885.219	-22.213	-36639.968	12.876	813883.609184	462058.079844	149-55-02	180-02-32	15.671
11-9	35871.659	-10.635	-36632.113	20.199	389582.521755	724571.640141	76-40-09	106-45-07	12.686
K.49	35874.584	6.285	-36619.769	26.474	-230155.248165	949743.736816	76-37-26	179-57-17	14.524
11-15	35877.944	4.997	-36605.639	13.119	-182918.378083	470682.747336	328-18-03	71-40-37	1.924
11-16	35879.581	5.008	-36606.650	-3.161	-183326.103200	-113415.355541	327-28-14	179-10-11	3.998
11-17	35882.952	6.706	-36608.800	-4.356	-245498.612800	-156306.138912	326-31-00	179-02-46	3.999
11-18	35886.287	6.645	-36611.006	-4.462	-243280.134870	-160124.612594	325-43-22	179-12-22	4.006
11-19	35889.597	6.573	-36613.262	-4.566	-240658.971126	-163871.899902	324-42-14	178-58-52	3.998
11-20	35892.860	6.490	-36615.572	-4.674	-237635.062280	-167763.227640	323-46-29	179-04-15	4.000
11-21	35896.087	6.027	-36617.936	-4.472	-220696.300272	-160527.301064	323-01-32	179-15-03	3.505
11-22	35898.887	5.881	-36620.044	-4.524	-215362.478764	-162406.564788	321-53-52	178-52-20	3.915
11-23	35901.968	6.186	-36622.460	-4.941	-226546.537560	-177391.623888	320-52-55	178-59-03	4.002
11-24	35905.073	6.182	-36624.985	-5.100	-226415.657270	-183115.872300	320-04-32	179-11-37	4.012
11-25	35908.150	3.453	-36627.560	-2.901	-126474.964680	-104169.543150	319-04-26	178-59-54	0.498
11-33	35908.526	-7.444	-36627.886	-9.452	272657.983384	-339407.387752	229-24-25	90-19-59	12.018
11-34	35900.706	-14.654	-36637.012	-17.103	536878.773848	-614009.774718	229-24-46	180-00-21	10.504

面積 (座標法) 計算書

合計

倍面積	1555.383744	-1555.383744	113.264
面積	777.6918720	777.6918720	
坪数	235.25	235.25	



面積 (座標法) 計算書

地番 = 11B3  
測点名

	[1] X(i)	[2] X(i+1)-X(i-1)	[3] Y(i)	[4] Y(i+1)-Y(i-1)	[2]*[3]	[1]*[4]	方向角	夾角	距離
K. 49	35874.584	-14.018	-36619.769	-11.110	513335.921842	-398566.628240	164-10-47	87-33-21	11.078
K. 50	35863.926	-14.724	-36616.749	4.153	539145.012276	148942.884678	164-25-46	180-14-59	4.221
K. 51	35859.860	-0.087	-36615.616	14.871	3185.558592	533271.978060	73-50-50	89-25-04	14.303
K. 52	35863.839	5.219	-36601.878	17.345	-191025.201282	622058.287455	71-01-42	177-10-52	3.814
11-10	35865.079	3.660	-36598.271	2.308	-133949.671860	82776.602332	331-46-27	80-44-45	2.747
11-11	35867.499	4.172	-36599.570	-2.267	-152693.406040	-81311.620233	331-04-44	179-18-17	2.002
11-12	35869.251	5.229	-36600.538	-2.955	-191384.213202	-105993.636705	330-15-12	179-10-28	4.005
11-13	35872.728	6.922	-36602.525	-4.024	-253362.678050	-144351.857472	329-24-16	179-09-04	4.002
11-14	35876.173	5.216	-36604.562	-3.114	-190929.395392	-111718.402722	328-41-42	179-17-26	2.073
11-15	35877.944	-1.589	-36605.639	-15.207	58166.360371	-545595.894408	256-37-26	107-55-44	14.524
合計				倍面積	488.287255	-488.287255			62.769
				面積	244.1436275	244.1436275			
				坪數	73.85	73.85			