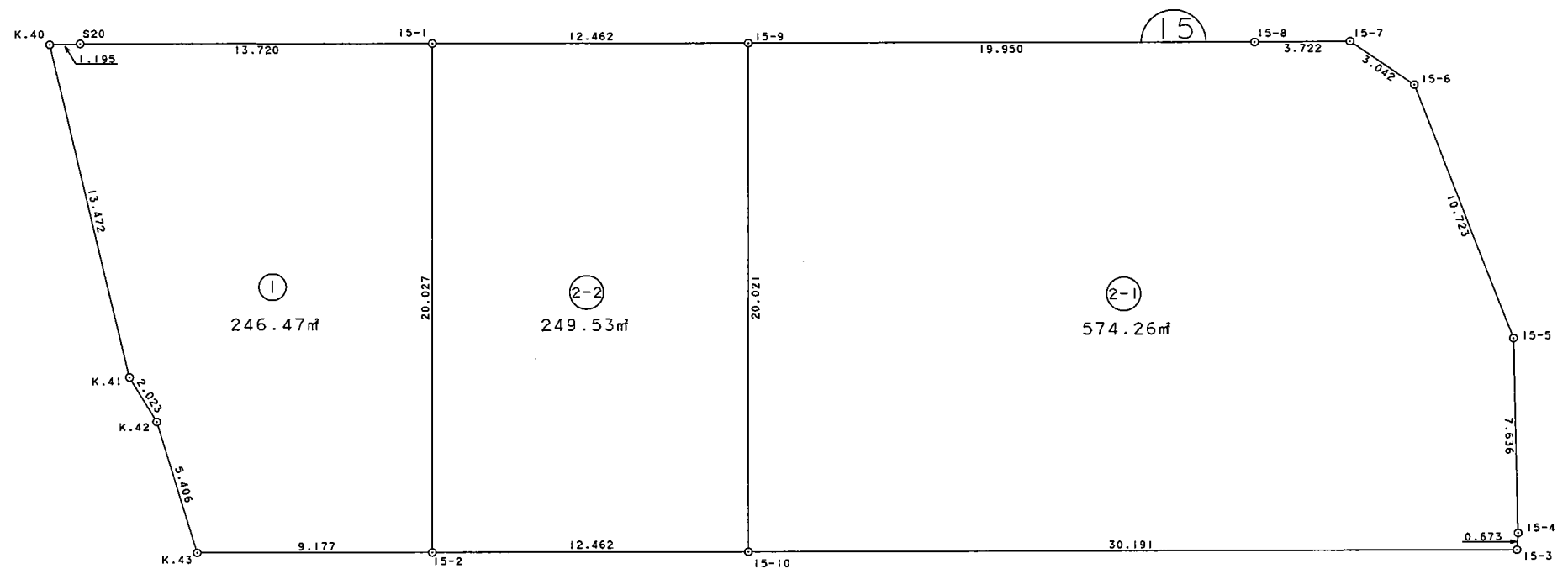


S = 1 : 250



### 面積 (座標法) 計算書

地番 = 15B1  
測点名

	[1] X(i)	[2] X(i+1)-X(i-1)	[3] Y(i)	[4] Y(i+1)-Y(i-1)	[2]*[3]	[1]*[4]	方向角	夾角	距離
S20	35870.780	-2.333	-36710.256	-14.731	85645.027248	-528412.460180	259-49-41	178-43-31	1.195
K.40	35870.569	-12.682	-36711.432	3.920	465574.380624	140612.630480	157-46-25	77-56-44	13.472
K.41	35858.098	-14.009	-36706.336	6.410	514219.061024	229850.408180	139-29-27	161-43-02	2.023
K.42	35856.560	-6.405	-36705.022	3.666	235095.665910	131450.148960	154-12-27	194-43-00	5.406
K.43	35851.693	-3.444	-36702.670	11.418	126403.995480	409354.630674	81-04-47	106-52-20	9.177
15-2	35853.116	21.209	-36693.604	5.969	-778234.647236	214007.249404	351-06-14	90-01-27	20.027
15-1	35872.902	17.664	-36696.701	-16.652	-648210.526464	-597355.564104	261-06-10	89-59-56	13.720
合計				倍面積	492.956586	-492.956586			65.020
				面積	246.4782930	246.4782930			
				坪數	74.55	74.55			

面積 (座標法) 計算書

地番 = 15B2-1  
測点名

	[1] X(i)	[2] X(i+1)-X(i-1)	[3] Y(i)	[4] Y(i+1)-Y(i-1)	[2]*[3]	[1]*[4]	方向角	夾角	距離
15-9	35874.829	-22.864	-36684.389	-16.614	838751.870096	-596024.409006	171-06-15	89-59-49	20.021
15-10	35855.049	-15.097	-36681.293	32.922	553777.480421	1180419.923178	81-04-36	89-58-21	30.191
15-3	35859.732	5.353	-36651.467	29.758	-196195.302851	1067113.904856	354-12-17	93-07-41	0.673
15-4	35860.402	8.187	-36651.535	-1.411	-300066.117045	-50599.027222	349-52-13	175-39-56	7.636
15-5	35867.919	16.790	-36652.878	-6.728	-615401.821620	-241319.359032	329-51-20	159-59-07	10.723
15-6	35877.192	10.590	-36658.263	-8.127	-388211.005170	-291573.939384	295-39-19	145-47-59	3.042
15-7	35878.509	0.721	-36661.005	-6.416	-26432.584605	-230196.513744	260-47-08	145-07-49	3.722
15-8	35877.913	-3.680	-36664.679	-23.384	134926.018720	-838969.117592	261-06-26	180-19-18	19.950
合計				倍面積	1148.537946	-1148.537946			95.958
				面積	574.2689730	574.2689730			
				坪數	173.71	173.71			

面積 (座標法) 計算書

地番 = 15B2-2  
測点名

	[1] X(i)	[2] X(i+1)-X(i-1)	[3] Y(i)	[4] Y(i+1)-Y(i-1)	[2]*[3]	[1]*[4]	方向角	夾角	距離
15-1	35872.902	-21.713	-36696.701	-9.215	796795.468813	-330568.791930	171-06-14	89-59-58	20.027
15-2	35853.116	-17.853	-36693.604	15.408	655090.912212	552424.811328	81-04-36	89-58-22	12.462
15-10	35855.049	21.713	-36681.293	9.215	-796460.914909	330404.276535	351-06-15	90-01-39	20.021
15-9	35874.829	17.853	-36684.389	-15.408	-654926.396817	-552759.365232	261-06-16	90-00-01	12.462
合計				倍面積	499.069299	-499.069299			64.972
				面積	249.5346495	249.5346495			
				坪數	75.48	75.48			