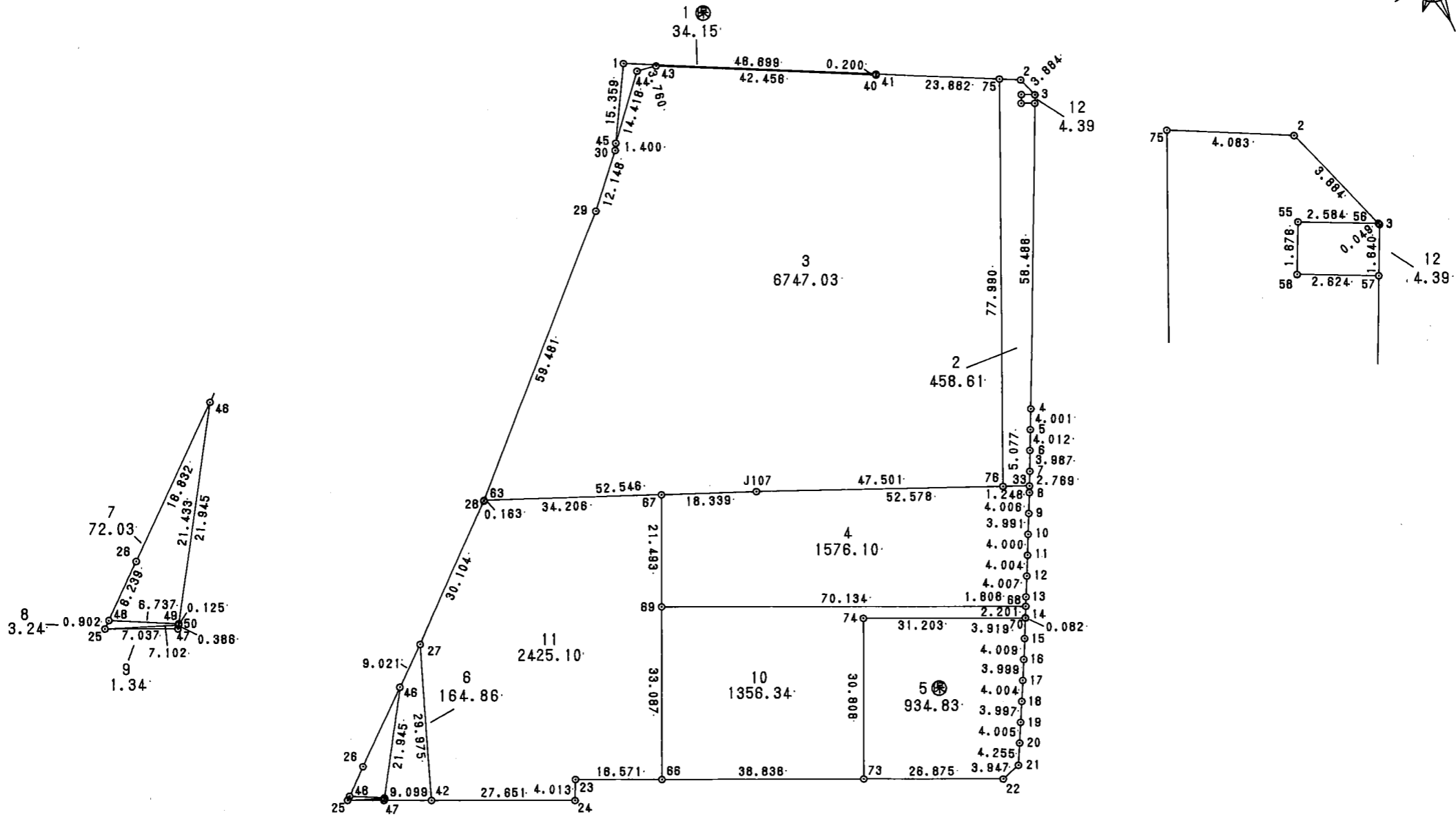


# 换地 图

# 1 街区



1/1000

面積計算書

地番； 保留地1- 1

測点	X	Y	D X	D Y	距離	方向角	夾角	倍横距	倍面積
1- 1	29437.337	-50144.403	-22.581	43.147	48.699	117-37-31	266-39-37	43.147	-974.302407
1- 41	29414.756	-50101.256	-0.177	-0.093	0.200	207-43-07	270-05-36	86.201	-15.257577
1- 40	29414.579	-50101.349	19.686	-37.616	42.456	297-37-29	269-54-22	48.492	954.613512
1- 43	29434.265	-50138.965	0.629	-3.707	3.760	279-37-49	162-00-20	7.169	4.509301
1- 44	29434.894	-50142.672	-10.727	-9.634	14.418	221-55-39	122-17-50	-6.172	66.207044
1- 45	29424.167	-50152.306	13.170	7.903	15.359	30-57-54	349-02-15	-7.903	-104.082510
合計					124.892		1440-00-00		-68.312637
								1/2 面積	34.1563185 34.1563185

面積計算書

地番； 1- 2

測点	X	Y	DX	DY	距離	方向角	夾角	倍横距	倍面積
1- 2	29401.789	-50076.479	-3.679	1.245	3.884	161-17-52	223-40-21	1.245	-4.580355
1- 56	29398.110	-50075.234	1.143	-2.317	2.584	296-14-17	314-56-25	0.173	0.197739
1- 55	29399.253	-50077.551	-1.502	-0.745	1.676	206-23-33	90-09-16	-2.889	4.339278
1- 58	29397.751	-50078.296	-1.159	2.354	2.624	116-12-57	89-49-24	-1.280	1.483520
1- 57	29396.592	-50075.942	-52.482	-25.811	58.486	206-11-18	269-58-21	-24.737	1298.247234
1- 4	29344.110	-50101.753	-3.586	-1.774	4.001	206-19-18	180-08-00	-52.322	187.626692
1- 5	29340.524	-50103.527	-3.590	-1.792	4.012	206-31-36	180-12-18	-55.888	200.637920
1- 6	29336.934	-50105.319	-3.567	-1.782	3.987	206-32-45	180-01-09	-59.462	212.100954
1- 7	29333.367	-50107.101	-2.474	-1.244	2.769	206-41-11	180-08-26	-62.488	154.595312
1- 33	29330.893	-50108.345	2.071	-4.635	5.077	294-04-25	267-23-14	-68.367	-141.588057
1- 76	29332.964	-50112.980	70.718	32.883	77.990	24-56-18	270-51-53	-40.119	-2837.135442
1- 75	29403.682	-50080.097	-1.893	3.618	4.083	117-37-31	272-41-13	-3.618	6.848874
合計					171.173		2520-00-00	1/2 面積	-917.226331 458.6131655 458.6131655

## 面積計算書

地番； 1- 3

測点	X	Y	D X	D Y	距離	方向角	夾角	倍横距	倍面積
J107	29352.341	-50156.349	20.904	-48.209	52.546	293-26-31	179-22-01	-48.209	-1007.760936
1- 63	29373.245	-50204.558	40.845	43.239	59.481	46-37-51	293-11-20	-53.179	-2172.096255
1- 29	29414.090	-50161.319	8.877	8.293	12.148	43-03-06	176-25-15	-1.647	-14.620419
1- 30	29422.967	-50153.026	1.200	0.720	1.400	30-57-54	167-54-48	7.366	8.839200
1- 45	29424.167	-50152.306	10.727	9.634	14.418	41-55-39	190-57-45	17.720	190.082440
1- 44	29434.894	-50142.672	-0.629	3.707	3.760	99-37-49	237-42-10	31.061	-19.537369
1- 43	29434.265	-50138.965	-19.686	37.616	42.456	117-37-29	197-59-40	72.384	-1424.951424
1- 40	29414.579	-50101.349	0.177	0.093	0.200	27-43-07	90-05-38	110.093	19.486461
1- 41	29414.756	-50101.256	-11.074	21.159	23.882	117-37-31	269-54-24	131.345	-1454.514530
1- 75	29403.682	-50080.097	-70.718	-32.883	77.990	204-56-18	267-18-47	119.621	-8459.357878
1- 76	29332.964	-50112.980	19.377	-43.369	47.501	294-04-30	269-08-12	43.369	840.361113
合計					335.782		2340-00-00	1 / 2 面積	-13494.069597 6747.0347985 6747.0347985

## 面積計算書

地番; 1- 4

測点	X	Y	D X	D Y	距離	方向角	夾角	倍横距	倍面積
1- 67	29359.636	-50173.175	-7.295	16.826	18.339	113-26-26	268-16-26	16.826	-122.745670
J107	29352.341	-50156.349	-21.448	48.004	52.578	114-04-29	180-38-03	81.656	-1751.357888
1- 33	29330.893	-50108.345	-1.115	-0.560	1.248	206-41-11	272-36-42	129.100	-143.946500
1- 8	29329.778	-50108.905	-3.572	-1.813	4.006	206-54-38	180-13-27	126.727	-452.668844
1- 9	29326.206	-50110.718	-3.557	-1.809	3.991	206-57-24	180-02-46	123.105	-437.884485
1- 10	29322.649	-50112.527	-3.568	-1.809	4.000	206-53-07	179-55-43	119.487	-426.329616
1- 11	29319.081	-50114.336	-3.562	-1.828	4.004	207-10-00	180-16-53	115.850	-412.657700
1- 12	29315.519	-50116.164	-3.559	-1.841	4.007	207-21-06	180-11-06	112.181	-399.252179
1- 13	29311.960	-50118.005	-1.604	-0.835	1.808	207-29-08	180-08-02	109.505	-175.646020
1- 68	29310.356	-50118.840	29.828	-63.475	70.134	295-10-09	267-41-01	45.195	1348.076460
1- 69	29340.184	-50182.315	19.452	9.140	21.493	25-10-00	269-59-51	-9.140	-177.791280
合計					185.608		2340-00-00	1/2 面積	-3152.203722 1576.101861 1576.101861

## 面積計算書

地番；保留地1-5

測点	X	Y	D X	D Y	距離	方向角	夾角	倍横距	倍面積
1- 70	29308.331	-50119.893	-3.472	-1.818	3.919	207-38-28	272-28-15	-1.818	6.312096
1- 15	29304.859	-50121.711	-3.547	-1.868	4.009	207-46-23	180-07-55	-5.504	19.522688
1- 16	29301.312	-50123.579	-3.534	-1.871	3.999	207-53-53	180-07-30	-9.243	32.664762
1- 17	29297.778	-50125.450	-3.533	-1.884	4.004	208-04-09	180-10-16	-12.998	45.921934
1- 18	29294.245	-50127.334	-3.523	-1.888	3.997	208-11-14	180-07-05	-16.770	59.080710
1- 19	29290.722	-50129.222	-3.526	-1.900	4.005	208-19-06	180-07-52	-20.558	72.487508
1- 20	29287.196	-50131.122	-3.745	-2.019	4.255	208-19-48	180-00-42	-24.477	91.666365
1- 21	29283.451	-50133.141	-1.162	-3.772	3.947	252-52-41	224-32-53	-30.268	35.171416
1- 22	29282.289	-50136.913	11.430	-24.323	26.875	295-10-13	222-17-32	-58.363	-667.089090
1- 73	29293.719	-50161.236	27.883	13.103	30.808	25-10-11	269-59-58	-69.583	-1940.182789
1- 74	29321.602	-50148.133	-13.271	28.240	31.203	115-10-13	270-00-02	-28.240	374.773040
合計					121.021		2340-00-00	1/2 面積	-1869.671360 934.835680 934.835680

面積計算書

地番； 1- 6

測点	X	Y	D X	D Y	距離	方向角	夾角	倍横距	倍面積
1- 27	29353.462	-50227.464	-27.976	-10.762	29.975	201-02-29	330-45-57	-10.762	301.087307
1- 42	29325.485	-50238.226	3.875	-8.232	9.099	295-12-18	274-09-49	-29.757	-115.300260
1- 47	29329.360	-50246.459	18.336	12.056	21.945	33-19-32	278-07-14	-25.933	-475.509266
1- 46	29347.696	-50234.403	5.765	6.938	9.021	50-16-32	196-57-00	-6.938	-40.002278
合計					70.040		1080-00-00		-329.724497
								1 / 2 面積	164.8622485 164.8622485

## 面積計算書

地番; 1- 7

測点	X	Y	D X	D Y	距離	方向角	夾角	倍横距	倍面積
1- 46	29347.696	-50234.403	-17.909	-11.775	21.433	213-19-30	343-03-06	-11.775	210.883983
1- 49	29329.787	-50246.178	3.149	-5.956	6.737	297-51-46	264-32-16	-29.507	-92.910407
1- 48	29332.936	-50252.134	4.003	4.786	6.239	50-05-41	292-13-55	-30.677	-122.787387
1- 26	29336.939	-50247.348	10.758	12.945	16.832	50-16-24	180-10-43	-12.945	-139.263760
合計					51.241		1080-00-00		-144.077572
								1 / 2 面積	72.038786 72.038786



## 面積計算書

地番； 1- 8

測点	X	Y	D X	D Y	距離	方向角	夾角	倍横距	倍面積
1- 48	29332.936	-50252.134	-3.149	5.956	6.737	117-51-46	247-46-46	5.956	-18.755444
1- 49	29329.787	-50246.178	-0.104	-0.069	0.125	213-25-35	275-33-49	11.843	-1.231672
1- 50	29329.683	-50246.247	2.674	-6.579	7.102	292-07-03	258-41-28	5.195	13.891430
1- 25	29332.357	-50252.826	0.579	0.692	0.902	50-05-00	297-57-57	-0.692	-0.400668
合計					14.866		1080-00-00	1 / 2 面積	-6.496354 3.248177 3.248177

## 面積計算書

地番； 1- 9

測点	X	Y	D X	D Y	距離	方向角	夾角	倍横距	倍面積
1- 25	29332.357	-50252.826	-2.674	6.579	7.102	112-07-03	356-54-45	6.579	-17.592246
1- 50	29329.683	-50246.247	-0.323	-0.212	0.386	213-19-36	281-12-33	12.946	-4.181558
1- 47	29329.360	-50246.459	2.997	-6.367	7.037	295-12-18	261-52-42	6.367	19.081899
合計					14.525		900-00-00	1 / 2 面積	-2.691905 1.3459525 1.3459525

面積計算書

地番； 1-10

測点	X	Y	D X	D Y	距離	方向角	夾角	倍横距	倍面積
1- 69	29340.184	-50182.315	-29.828	63.475	70.134	115-10-09	270-00-04	63.475	-1893.332300
1- 68	29310.356	-50118.840	-1.953	-1.015	2.201	207-28-25	272-18-16	125.935	-245.951055
1- 14	29308.403	-50119.855	-0.072	-0.038	0.082	207-38-28	180-10-03	124.882	-8.991504
1- 70	29308.331	-50119.893	13.271	-28.240	31.203	295-10-13	267-31-45	96.604	1282.031684
1- 74	29321.602	-50148.133	-27.883	-13.103	30.808	205-10-11	89-59-58	55.261	-1540.842463
1- 73	29293.719	-50161.236	16.519	-35.150	38.838	295-10-15	270-00-04	7.008	115.765152
1- 66	29310.238	-50196.386	29.946	14.071	33.087	25-10-05	269-59-50	-14.071	-421.370166
合計					206.353		1620-00-00		-2712.690652
								1 / 2 面積	1356.345326 1356.345326

## 面積計算書

地番; 1-11

測点	X	Y	D X	D Y	距離	方向角	夾角	倍横距	倍面積
1- 23	29317.285	-50211.384	-3.575	-1.824	4.013	207-01-52	91-51-45	-1.824	6.520800
1- 24	29313.710	-50213.208	11.775	-25.018	27.651	295-12-18	268-10-26	-28.666	-337.542150
1- 42	29325.485	-50238.226	27.977	10.762	29.975	21-02-29	265-50-11	-42.922	-1200.828794
1- 27	29353.462	-50227.464	19.671	22.788	30.104	49-11-54	208-09-25	-9.372	-184.356612
1- 28	29373.133	-50204.676	0.112	0.118	0.163	46-37-50	177-25-56	13.534	1.515808
1- 63	29373.245	-50204.558	-13.609	31.383	34.206	113-26-33	246-48-43	45.035	-612.881315
1- 67	29359.636	-50173.175	-19.452	-9.140	21.493	205-10-00	271-43-27	67.278	-1308.691656
1- 69	29340.184	-50182.315	-29.946	-14.071	33.087	205-10-05	180-00-05	44.067	-1319.630382
1- 66	29310.238	-50196.386	7.047	-14.998	16.571	295-10-07	270-00-02	14.998	105.690906
合計					197.263		1980-00-00	1 / 2 面積	-4850.203395 2425.1016975 2425.1016975

## 面積計算書

地番; 1-12

測点	X	Y	D X	D Y	距離	方向角	夾角	倍横距	倍面積
1- 55	29399.253	-50077.551	-1.143	2.317	2.584	116-14-17	269-50-44	2.317	-2.648331
1- 56	29398.110	-50075.234	-0.046	0.016	0.049	161-45-19	225-31-02	4.650	-0.213900
1- 3	29398.064	-50075.218	-1.472	-0.724	1.640	206-11-07	224-25-48	3.942	-5.802624
1- 57	29396.592	-50075.942	1.159	-2.354	2.624	296-12-57	270-01-50	0.864	1.001376
1- 58	29397.751	-50078.296	1.502	0.745	1.676	26-23-33	270-10-36	-0.745	-1.118990
合計					8.573		1260-00-00	1 / 2 面積	-8.782469 4.3912345 4.3912345