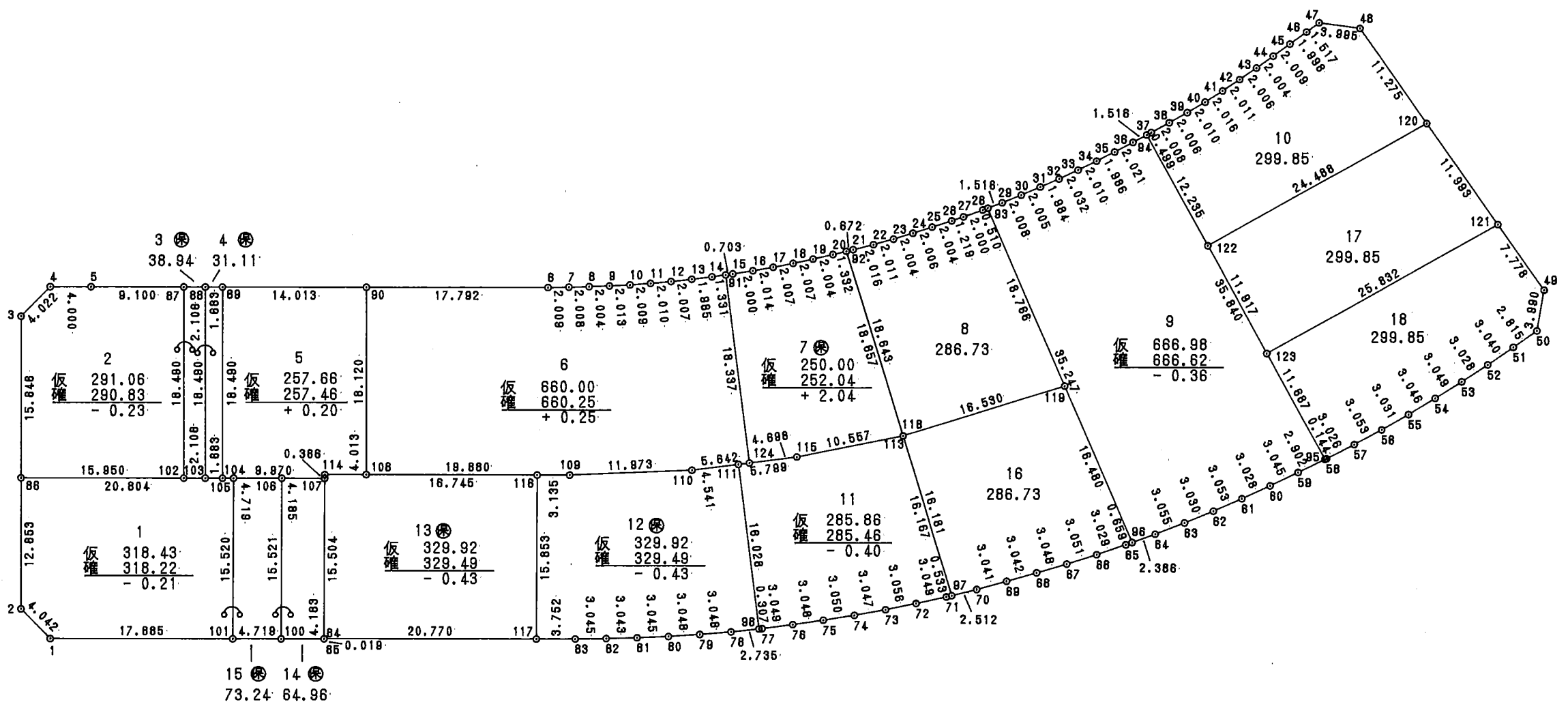
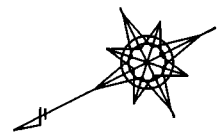


換地 圖

4 街区



面積計算書

地番； 4- 1

PAGE 36

測点	X	Y	DX	DY	距離	方向角	夾角	倍横距	倍面積
4- 1	29252.624	-50225.291	1.250	3.844	4.042	71-59-11	225-03-27	3.844	4.805000
4- 2	29253.874	-50221.447	-5.723	11.285	12.653	116-53-24	224-54-13	18.973	-108.582479
4- 86	29248.151	-50210.162	-18.550	-9.416	20.804	206-54-43	270-01-19	20.842	-386.619100
4-105	29229.601	-50219.578	7.077	-13.813	15.520	297-07-49	270-13-06	-2.387	-16.892799
4-101	29236.678	-50233.391	15.946	8.100	17.885	26-55-44	269-47-55	-8.100	-129.162600
合計					70.904		1260-00-00	1 / 2 面積	-636.451978 318.225989 318.225989

面積計算書

地番; 4- 2

PAGE 37

測点	X	Y	DX	DY	距離	方向角	夾角	倍横距	倍面積
4- 86	29248.151	-50210.162	-7.076	13.954	15.646	116-53-24	269-58-42	13.954	-98.738504
4- 3	29241.075	-50196.208	-3.825	1.243	4.022	161-59-51	225-06-27	29.151	-111.502575
4- 4	29237.250	-50194.965	-3.569	-1.807	4.000	206-51-12	224-51-21	28.587	-102.027003
4- 5	29233.681	-50196.772	-8.115	-4.118	9.100	206-54-33	180-03-21	22.662	-183.902130
4- 87	29225.566	-50200.890	8.363	-16.491	18.490	296-53-22	269-58-49	2.053	17.169239
4-102	29233.929	-50217.381	14.222	7.219	15.950	26-54-42	270-01-20	-7.219	-102.668618
合計					67.208		1440-00-00		-581.669591
								1/2 面積	290.8347955 290.8347955

面積計算書

地番； 保留地4- 3

PAGE 38

測点	X	Y	D X	D Y	距離	方向角	夾角	倍横距	倍面積
4-102	29233.929	-50217.381	-8.363	16.491	18.490	116-53-22	269-58-51	16.491	-137.914233
4- 87	29225.566	-50200.890	-1.878	-0.953	2.106	206-53-52	270-00-30	32.029	-60.150462
4- 88	29223.688	-50201.843	8.363	-16.491	18.490	296-53-22	269-59-30	14.585	121.974355
4-103	29232.051	-50218.334	1.878	0.953	2.106	26-54-31	270-01-09	-0.953	-1.789734
合計					41.192		1080-00-00	1 / 2 面積	-77.880074 38.940037 38.940037

面積計算書

地番； 保留地4- 4

測点	X	Y	D X	D Y	距離	方向角	夾角	倍横距	倍面積
4-103	29232.051	-50218.334	-8.363	16.491	18.490	116-53-22	269-59-03	16.491	-137.914233
4- 88	29223.688	-50201.843	-1.500	-0.761	1.683	206-54-18	270-00-56	32.221	-48.331500
4- 89	29222.188	-50202.604	8.362	-16.492	18.490	296-53-22	269-59-04	14.968	125.162416
4-104	29230.550	-50219.096	1.501	0.762	1.683	26-54-19	270-00-57	-0.762	-1.143762
合計					40.346		1080-00-00	1 / 2 面積	-62.227079 31.1135395 31.1135395

面積計算書

地番； 4- 5

PAGE 40

測点	X	Y	D X	D Y	距離	方向角	夾角	倍横距	倍面積
4-104	29230.550	-50219.096	-8.362	16.492	18.490	116-53-22	269-58-34	16.492	-137.906104
4- 89	29222.188	-50202.604	-12.495	-6.343	14.013	206-54-40	270-01-18	26.641	-332.879295
4- 90	29209.693	-50208.947	8.210	-16.154	18.120	296-56-28	270-01-48	4.144	34.022240
4-108	29217.903	-50225.101	3.580	1.813	4.013	26-51-06	269-54-38	-10.197	-36.505260
4-114	29221.483	-50223.288	0.178	-0.320	0.366	299-01-40	92-10-34	-8.704	-1.549312
4-107	29221.661	-50223.608	8.889	4.512	9.970	26-54-48	267-53-08	-4.512	-40.107168
合計					64.972		1440-00-00	1 / 2 面積	-514.924899 257.4624495 257.4624495

面積計算書

地番； 4- 6

PAGE 41

測点	X	Y	DX	DY	距離	方向角	夾角	倍横距	倍面積
4-108	29217.903	-50225.101	-8.210	16.154	18.120	116-56-28	269-59-54	16.154	-132.624340
4- 90	29209.693	-50208.947	-15.866	-8.052	17.792	206-54-33	269-58-05	24.256	-384.845696
4- 6	29193.827	-50216.999	-1.809	-0.874	2.009	205-47-13	178-52-40	15.330	-27.731970
4- 7	29192.018	-50217.873	-1.814	-0.861	2.008	205-23-27	179-36-14	13.595	-24.661330
4- 8	29190.204	-50218.734	-1.820	-0.840	2.004	204-46-31	179-23-04	11.894	-21.647080
4- 9	29188.384	-50219.574	-1.840	-0.816	2.013	203-54-58	179-08-27	10.238	-18.837920
4- 10	29186.544	-50220.390	-1.852	-0.779	2.009	202-48-46	178-53-48	8.643	-16.006836
4- 11	29184.692	-50221.169	-1.870	-0.737	2.010	201-30-37	178-41-51	7.127	-13.327490
4- 12	29182.822	-50221.906	-1.876	-0.713	2.007	200-48-36	179-17-59	5.677	-10.650052
4- 13	29180.946	-50222.619	-1.868	-0.670	1.985	199-43-53	178-55-17	4.294	-8.021192
4- 14	29179.078	-50223.289	-1.259	-0.432	1.331	198-56-02	179-12-09	3.192	-4.018728
4- 91	29177.819	-50223.721	6.163	-17.271	18.337	289-38-19	270-42-17	-14.511	-89.431293
4-124	29183.982	-50240.992	5.312	1.902	5.642	19-41-36	270-03-17	-29.880	-158.722560
4-110	29189.294	-50239.090	10.887	4.982	11.973	24-35-27	184-53-51	-22.996	-250.357452
4-109	29200.181	-50234.108	17.722	9.007	19.880	26-56-34	182-21-07	-9.007	-159.622054
合計					109.120		3060-00-00	1 / 2 面積	-1320.505993 660.2529965 660.2529965

面積計算書

地番; 4- 7

PAGE 42

測点	X	Y	D X	D Y	距離	方向角	夾角	倍横距	倍面積
4-124	29183.982	-50240.992	-6.163	17.271	18.337	109-38-19	269-56-43	17.271	-106.441173
4- 91	29177.819	-50223.721	-0.665	-0.228	0.703	198-56-02	269-17-43	34.314	-22.818810
4- 15	29177.154	-50223.949	-1.904	-0.613	2.000	197-50-46	178-54-44	33.473	-63.732592
4- 16	29175.250	-50224.562	-1.924	-0.596	2.014	197-12-41	179-21-55	32.264	-62.075936
4- 17	29173.326	-50225.158	-1.928	-0.558	2.007	196-08-29	178-55-48	31.110	-59.980080
4- 18	29171.398	-50225.716	-1.940	-0.515	2.007	194-52-01	178-43-32	30.037	-58.271780
4- 19	29169.458	-50226.231	-1.945	-0.483	2.004	193-56-46	179-04-45	29.039	-56.480855
4- 20	29167.513	-50226.714	-1.295	-0.309	1.332	193-25-02	179-28-16	28.247	-36.579865
4- 92	29166.218	-50227.023	3.171	-18.385	18.657	279-47-11	266-22-09	9.553	30.292563
4-113	29169.389	-50245.408	10.170	2.833	10.557	15-34-03	275-46-52	-5.999	-61.009830
4-115	29179.559	-50242.575	4.423	1.583	4.698	19-41-36	184-07-33	-1.583	-7.001609
合計					64.316		2340-00-00	1 / 2 面積	-504.099967 252.0499835 252.0499835

面積計算書

地番； 4- 8

PAGE 43

測点	X	Y	D X	D Y	距離	方向角	夾角	倍横距	倍面積
4- 92	29166.218	-50227.023	-0.654	-0.156	0.672	193-25-22	273-38-12	-0.156	0.102024
4- 21	29165.564	-50227.179	-1.967	-0.440	2.016	192-36-32	179-11-10	-0.752	1.479184
4- 22	29163.597	-50227.619	-1.971	-0.400	2.011	191-28-19	178-51-47	-1.592	3.137832
4- 23	29161.626	-50228.019	-1.972	-0.356	2.004	190-14-00	178-45-41	-2.348	4.630256
4- 24	29159.654	-50228.375	-1.978	-0.332	2.006	189-31-41	179-17-41	-3.036	6.005208
4- 25	29157.676	-50228.707	-1.980	-0.309	2.004	188-52-12	179-20-31	-3.677	7.280460
4- 26	29155.696	-50229.016	-1.206	-0.179	1.219	188-26-33	179-34-21	-4.165	5.022990
4- 27	29154.490	-50229.195	-1.982	-0.268	2.000	187-42-02	179-15-29	-4.612	9.140984
4- 28	29152.508	-50229.463	-0.506	-0.058	0.510	186-34-39	178-52-37	-4.938	2.498628
4- 93	29152.002	-50229.521	1.104	-18.734	18.766	273-22-20	266-47-41	-23.730	-26.197920
4-119	29153.106	-50248.255	16.281	2.860	16.530	9-57-58	276-35-38	-39.604	-644.792724
4-118	29169.387	-50245.395	-3.169	18.372	18.643	99-47-10	269-49-12	-18.372	58.220868
合計					68.381		2520-00-00	1 / 2 面積	-573.472210 286.736105 286.736105

面積計算書

地番； 4- 9

PAGE 44

測点	X	Y	D X	D Y	距離	方向角	夾角	倍横距	倍面積
4- 96	29154.075	-50264.707	-2.073	35.186	35.247	93-22-20	266-25-11	35.186	-72.940578
4- 93	29152.002	-50229.521	-1.506	-0.174	1.516	186-34-39	273-12-19	70.198	-105.718188
4- 29	29150.496	-50229.695	-2.000	-0.183	2.008	185-13-41	178-39-02	69.841	-139.682000
4- 30	29148.496	-50229.878	-2.000	-0.139	2.005	183-58-32	178-44-51	69.519	-139.038000
4- 31	29146.496	-50230.017	-1.981	-0.113	1.984	183-15-53	179-17-21	69.267	-137.217927
4- 32	29144.515	-50230.130	-2.031	-0.078	2.032	182-11-58	178-56-05	69.076	-140.293356
4- 33	29142.484	-50230.208	-2.010	-0.036	2.010	181-01-34	178-49-36	68.962	-138.613620
4- 34	29140.474	-50230.244	-1.986	-0.011	1.986	180-19-02	179-17-28	68.915	-136.865190
4- 35	29138.488	-50230.255	-2.021	0.018	2.021	179-29-23	179-10-21	68.922	-139.291362
4- 36	29136.467	-50230.237	-1.515	0.035	1.516	178-39-47	179-10-24	68.975	-104.497125
4- 94	29134.952	-50230.202	-1.320	-35.815	35.840	267-53-22	269-13-35	33.195	-43.817400
4- 95	29133.632	-50266.017	2.902	0.043	2.902	0-50-55	272-57-33	-2.577	-7.478454
4- 59	29136.534	-50265.974	3.044	0.084	3.045	1-34-50	180-43-55	-2.450	-7.457800
4- 60	29139.578	-50265.890	3.025	0.127	3.028	2-24-15	180-49-25	-2.239	-6.772975
4- 61	29142.603	-50265.763	3.046	0.204	3.053	3-49-54	181-25-39	-1.908	-5.811768
4- 62	29145.649	-50265.559	3.019	0.253	3.030	4-47-25	180-57-31	-1.451	-4.380569
4- 63	29148.668	-50265.306	3.039	0.310	3.055	5-49-28	181-02-03	-0.888	-2.698632
4- 64	29151.707	-50264.996	2.368	0.289	2.386	6-57-09	181-07-41	-0.289	-0.684352
合計					108.664		3600-00-00	1 / 2 面積	-1333.259296 666.629648 666.629648

面積計算書

地番； 4-10

PAGE 45

測点	X	Y	D X	D Y	距離	方向角	夾角	倍横距	倍面積
4- 94	29134.952	-50230.202	-0.499	0.012	0.499	178-39-47	270-46-27	0.012	-0.005988
4- 37	29134.453	-50230.190	-2.007	0.061	2.008	178-15-33	179-35-46	0.085	-0.170595
4- 38	29132.446	-50230.129	-2.004	0.088	2.006	177-29-08	179-13-35	0.234	-0.468936
4- 39	29130.442	-50230.041	-2.006	0.128	2.010	176-20-56	178-51-48	0.450	-0.902700
4- 40	29128.436	-50229.913	-2.008	0.179	2.016	174-54-21	178-33-25	0.757	-1.520056
4- 41	29126.428	-50229.734	-2.000	0.212	2.011	173-56-57	179-02-36	1.148	-2.296000
4- 42	29124.428	-50229.522	-1.990	0.256	2.006	172-40-10	178-43-13	1.616	-3.215840
4- 43	29122.438	-50229.266	-1.984	0.280	2.004	171-58-01	179-17-51	2.152	-4.269568
4- 44	29120.454	-50228.986	-1.985	0.311	2.009	171-05-44	179-07-43	2.743	-5.444855
4- 45	29118.469	-50228.675	-1.973	0.318	1.998	170-50-39	179-44-55	3.372	-6.652956
4- 46	29116.496	-50228.357	-1.498	0.241	1.517	170-51-38	180-00-59	3.931	-5.888638
4- 47	29114.998	-50228.116	-3.294	-2.260	3.995	214-27-14	223-35-36	1.912	-6.298128
4- 48	29111.704	-50230.376	-1.675	-11.150	11.275	261-27-29	227-00-15	-11.498	19.259150
4-120	29110.029	-50241.526	24.472	-0.902	24.488	357-53-17	276-25-48	-23.550	-576.315600
4-122	29134.501	-50242.428	0.451	12.226	12.235	87-53-20	270-00-03	-12.226	-5.513926
合計					72.077		3060-00-00	1 / 2 面積	-599.704636 299.852318 299.852318

面積計算書

地番； 4-11

PAGE 46

測点	X	Y	DX	DY	距離	方向角	夾角	倍横距	倍面積
4- 98	29190.418	-50255.711	-5.399	15.090	16.028	109-41-18	268-43-36	15.090	-81.470910
4-111	29185.019	-50240.621	-5.460	-1.954	5.799	199-41-36	270-00-18	28.226	-154.113960
4-115	29179.559	-50242.575	-10.170	-2.833	10.557	195-34-03	175-52-27	23.439	-238.374630
4-113	29169.389	-50245.408	2.748	-15.932	16.167	279-47-08	264-13-05	4.674	12.844152
4- 97	29172.137	-50261.340	0.519	0.122	0.533	13-12-35	273-25-27	-11.136	-5.779584
4- 71	29172.656	-50261.218	2.949	0.774	3.049	14-42-23	181-29-48	-10.240	-30.197760
4- 72	29175.605	-50260.444	2.945	0.816	3.056	15-29-13	180-46-50	-8.650	-25.474250
4- 73	29178.550	-50259.628	2.922	0.865	3.047	16-29-25	181-00-12	-6.969	-20.363418
4- 74	29181.472	-50258.763	2.903	0.937	3.050	17-53-19	181-23-54	-5.167	-14.999801
4- 75	29184.375	-50257.826	2.886	0.979	3.048	18-44-17	180-50-58	-3.251	-9.382386
4- 76	29187.261	-50256.847	2.871	1.026	3.049	19-39-55	180-55-38	-1.246	-3.577266
4- 77	29190.132	-50255.821	0.286	0.110	0.307	20-57-42	181-17-47	-0.110	-0.031460
合計					67.690		2520-00-00	1/2 面積	-570.921273 285.4606365 285.4606365

面積計算書

地番； 4-12

PAGE 47

測点	X	Y	DX	DY	距離	方向角	夾角	倍横距	倍面積
4-117	29210.205	-50246.797	-7.230	14.109	15.853	117-07-49	270-15-03	14.109	-102.008070
4-116	29202.975	-50232.688	-2.794	-1.420	3.135	206-56-34	269-48-45	26.798	-74.873612
4-109	29200.181	-50234.108	-10.887	-4.982	11.973	204-35-27	177-38-53	20.396	-222.051252
4-110	29189.294	-50239.090	-4.275	-1.531	4.541	199-41-36	175-06-09	13.883	-59.349825
4-111	29185.019	-50240.621	5.399	-15.090	16.028	289-41-18	269-59-42	-2.738	-14.782462
4- 98	29190.418	-50255.711	2.554	0.978	2.735	20-57-42	271-16-24	-16.850	-43.034900
4- 78	29192.972	-50254.733	2.827	1.139	3.048	21-56-40	180-58-58	-14.733	-41.650191
4- 79	29195.799	-50253.594	2.801	1.201	3.048	23-12-30	181-15-50	-12.393	-34.712793
4- 80	29198.600	-50252.393	2.775	1.254	3.045	24-19-04	181-06-34	-9.938	-27.577950
4- 81	29201.375	-50251.139	2.753	1.297	3.043	25-13-34	180-54-30	-7.387	-20.336411
4- 82	29204.128	-50249.842	2.730	1.349	3.045	26-17-45	181-04-11	-4.741	-12.942930
4- 83	29206.858	-50248.493	3.347	1.696	3.752	26-52-46	180-35-01	-1.696	-5.676512
合計					73.246		2520-00-00	1 / 2 面積	-658.996908 329.498454 329.498454

面積計算書

地番； 4-13

測点	X	Y	D X	D Y	距離	方向角	夾角	倍横距	倍面積
4- 84	29228.731	-50237.406	-7.070	13.798	15.504	117-07-54	270-15-08	13.798	-97.551860
4-107	29221.661	-50223.608	-0.178	0.320	0.366	119-01-40	181-53-46	27.916	-4.969048
4-114	29221.483	-50223.288	-3.580	-1.813	4.013	206-51-06	267-49-26	26.423	-94.594340
4-108	29217.903	-50225.101	-14.928	-7.587	16.745	206-56-34	180-05-28	17.023	-254.119344
4-116	29202.975	-50232.688	7.230	-14.109	15.853	297-07-49	270-11-15	-4.673	-33.785790
4-117	29210.205	-50246.797	18.526	9.391	20.770	26-52-46	269-44-57	-9.391	-173.977666
合計					73.251		1440-00-00		-658.998048
								1 / 2 面積	329.499024 329.499024

面積計算書

地番； 保留地4-14

測点	X	Y	D X	D Y	距離	方向角	夾角	倍横距	倍面積
4-100	29232.471	-50235.528	-7.078	13.814	15.521	117-07-49	270-12-10	13.814	-97.775492
4-106	29225.393	-50221.714	-3.732	-1.894	4.185	206-54-42	269-46-53	25.734	-96.039288
4-107	29221.661	-50223.608	7.070	-13.798	15.504	297-07-54	270-13-12	10.042	70.996940
4- 84	29228.731	-50237.406	0.010	-0.016	0.019	302-00-19	184-52-25	-3.772	-0.037720
4- 85	29228.741	-50237.422	3.730	1.894	4.183	26-55-39	264-55-20	-1.894	-7.064620
合計					39.412		1260-00-00	1 / 2 面積	-129.920180 64.960090 64.960090

面積計算書

地番； 保留地4-15

PAGE 50

測点	X	Y	D X	D Y	距離	方向角	夾角	倍横距	倍面積
4-101	29236.678	-50233.391	-7.077	13.813	15.520	117-07-49	270-12-28	13.813	-97.754601
4-105	29229.601	-50219.578	-4.208	-2.136	4.719	206-54-40	269-46-51	25.490	-107.261920
4-106	29225.393	-50221.714	7.078	-13.814	15.521	297-07-49	270-13-09	9.540	67.524120
4-100	29232.471	-50235.528	4.207	2.137	4.719	26-55-21	269-47-32	-2.137	-8.990359
合計					40.479		1080-00-00	1 / 2 面積	-146.482760 73.241380 73.241380

面積計算書

地番； 4-16

PAGE 51

測点	X	Y	D X	D Y	距離	方向角	夾角	倍横距	倍面積
4- 96	29154.075	-50264.707	0.654	0.080	0.659	6-59-42	273-37-22	0.080	0.052320
4- 65	29154.729	-50264.627	2.997	0.437	3.029	8-17-46	181-18-04	0.597	1.789209
4- 66	29157.726	-50264.190	3.010	0.497	3.051	9-22-33	181-04-47	1.531	4.608310
4- 67	29160.736	-50263.693	2.995	0.565	3.048	10-40-59	181-18-26	2.593	7.766035
4- 68	29163.731	-50263.128	2.984	0.590	3.042	11-11-04	180-30-05	3.748	11.184032
4- 69	29166.715	-50262.538	2.977	0.623	3.041	11-49-11	180-38-07	4.961	14.768897
4- 70	29169.692	-50261.915	2.445	0.575	2.512	13-14-17	181-25-06	6.159	15.058755
4- 97	29172.137	-50261.340	-2.750	15.945	16.181	99-47-10	266-32-53	22.679	-62.367250
4-118	29169.387	-50245.395	-16.281	-2.860	16.530	189-57-58	270-10-48	35.764	-582.273684
4-119	29153.106	-50248.255	0.969	-16.452	16.480	273-22-20	263-24-22	16.452	15.941988
合計					67.573		2160-00-00	1 / 2 面積	-573.471388 286.735694 286.735694

面積計算書

地番； 4-17

PAGE 52

測点	X	Y	D X	D Y	距離	方向角	夾角	倍横距	倍面積
4-121	29108.248	-50253.386	25.814	-0.952	25.832	357-53-21	276-25-47	-0.952	-24.574928
4-123	29134.062	-50254.338	0.439	11.910	11.917	87-53-24	270-00-03	10.006	4.392634
4-122	29134.501	-50242.428	-24.472	0.902	24.488	177-53-17	269-59-53	22.818	-558.402096
4-120	29110.029	-50241.526	-1.781	-11.860	11.993	261-27-34	263-34-17	11.860	-21.122660
合計					74.230		1080-00-00	1 / 2 面積	-599.707050 299.853525 299.853525

面積計算書

地番； 4-18

PAGE 53

測点	X	Y	D X	D Y	距離	方向角	夾角	倍横距	倍面積
4- 49	29107.093	-50261.078	2.396	-3.191	3.990	306-54-05	225-26-33	-3.191	-7.645636
4- 50	29109.489	-50264.269	2.788	-0.388	2.815	352-04-38	225-10-33	-6.770	-18.874760
4- 51	29112.277	-50264.657	3.015	-0.386	3.040	352-42-16	180-37-38	-7.544	-22.745160
4- 52	29115.292	-50265.043	3.012	-0.310	3.028	354-07-25	181-25-09	-8.240	-24.818880
4- 53	29118.304	-50265.353	3.038	-0.254	3.049	355-13-15	181-05-50	-8.804	-26.746552
4- 54	29121.342	-50265.607	3.040	-0.198	3.046	356-16-25	181-03-10	-9.256	-28.138240
4- 55	29124.382	-50265.805	3.028	-0.124	3.031	357-39-18	181-22-53	-9.578	-29.002184
4- 56	29127.410	-50265.929	3.052	-0.068	3.053	358-43-25	181-04-07	-9.770	-29.818040
4- 57	29130.462	-50265.997	3.026	-0.022	3.026	359-35-00	180-51-35	-9.860	-29.836360
4- 58	29133.488	-50266.019	0.144	0.002	0.144	0-48-06	181-13-06	-9.880	-1.422720
4- 95	29133.632	-50266.017	0.430	11.679	11.687	87-53-22	267-05-16	1.801	0.774430
4-123	29134.062	-50254.338	-25.814	0.952	25.832	177-53-21	269-59-59	14.432	-372.547648
4-121	29108.248	-50253.386	-1.155	-7.692	7.778	261-27-32	263-34-11	7.692	-8.884260
合計					73.519		2700-00-00	1/2 面積	-599.706010 299.853005 299.853005