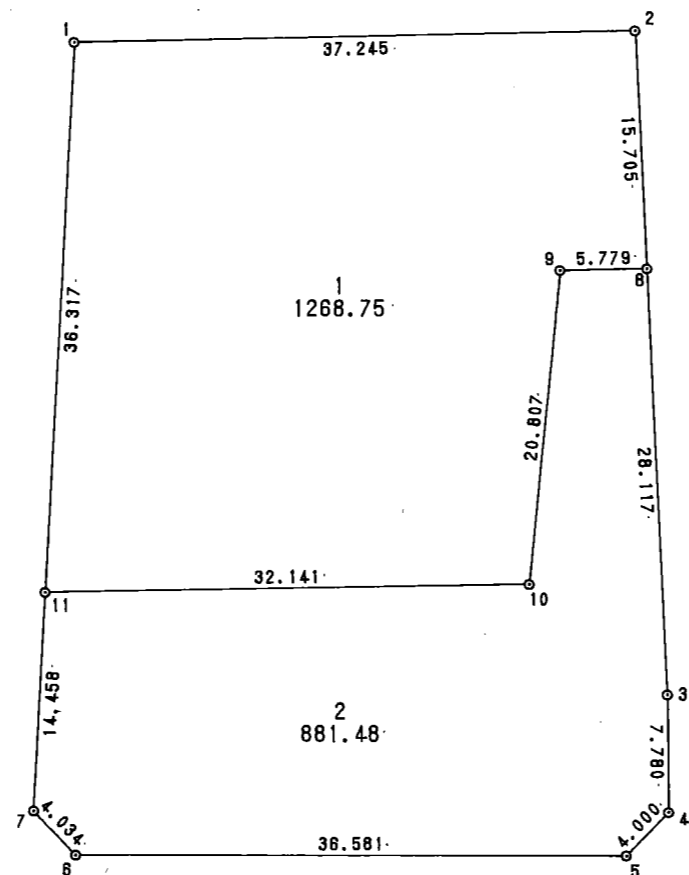


換 地 圖

17 街 区



面積計算書

地番； 17- 1

測点	X	Y	D X	D Y	距離	方向角	夾角	倍横距	倍面積
17- 1	29052.863	-50012.707	-8.156	36.341	37.245	102-38-57	265-30-15	36.341	-296.397196
17- 2	29044.707	-49976.366	-15.404	-3.060	15.705	191-14-06	268-35-09	69.622	-1072.457288
17- 8	29029.303	-49979.426	1.265	-5.638	5.779	282-38-50	271-24-44	60.924	77.068860
17- 9	29030.568	-49985.064	-19.587	-7.020	20.807	199-42-58	97-04-08	48.266	-945.386142
17- 10	29010.981	-49992.084	7.179	-31.329	32.141	282-54-21	263-11-23	9.917	71.194143
17- 11	29018.160	-50023.413	34.703	10.706	36.317	17-08-42	274-14-21	-10.706	-371.530318
合計					147.994		1440-00-00	1 / 2 面積	-2537.507941 1268.7539705 1268.7539705

面積計算書

地番； 17- 2

測点	X	Y	D X	D Y	距離	方向角	夾角	倍横距	倍面積
17- 11	29018.160	-50023.413	-7.179	31.329	32.141	102-54-21	265-45-39	31.329	-224.910891
17- 10	29010.981	-49992.084	19.587	7.020	20.807	19-42-58	96-48-37	69.678	1364.782986
17- 9	29030.568	-49985.064	-1.265	5.638	5.779	102-38-50	262-55-52	82.336	-104.155040
17- 8	29029.303	-49979.426	-27.578	-5.478	28.117	191-14-06	268-35-16	82.496	-2275.074688
17- 3	29001.725	-49984.904	-7.565	-1.816	7.780	193-29-55	182-15-49	75.202	-568.903130
17- 4	28994.160	-49986.720	-2.090	-3.410	4.000	238-29-45	224-59-50	69.976	-146.249840
17- 5	28992.070	-49990.130	8.791	-35.509	36.581	283-54-19	225-24-34	31.057	273.022087
17- 6	29000.861	-50025.639	3.483	-2.036	4.034	329-41-29	225-47-10	-6.488	-22.597704
17- 7	29004.344	-50027.675	13.816	4.262	14.458	17-08-42	227-27-13	-4.262	-58.883792
合計					153.697		1980-00-00	1 / 2 面積	-1762.970012 881.485006 881.485006