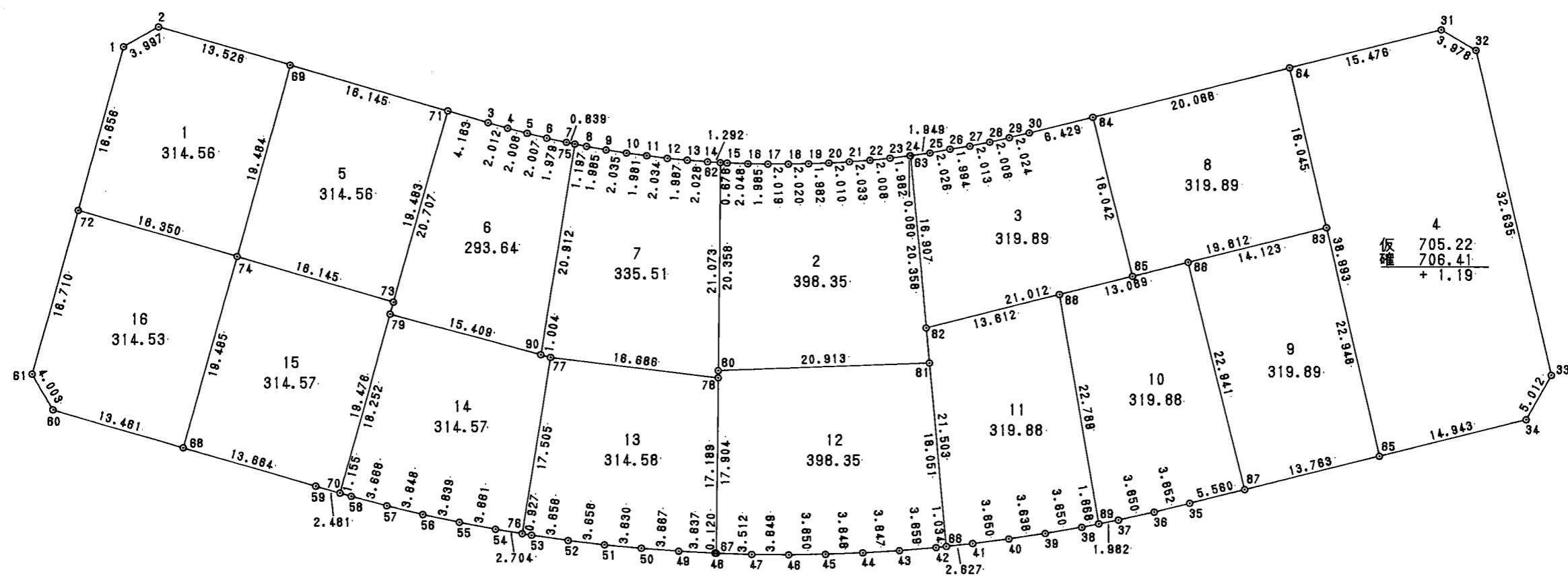
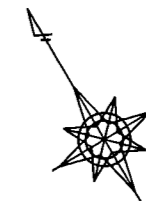


換地 圖

27 街区



1/500

面積計算書

地番； 27- 1

測点	X	Y	DX	DY	距離	方向角	夾角	倍横距	倍面積
27- 1	28810.623	-50110.922	-0.120	3.995	3.997	91-43-14	224-58-45	3.995	-0.479400
27- 2	28810.503	-50106.927	-9.852	9.267	13.526	136-45-12	225-01-58	17.257	-170.015964
27- 69	28800.651	-50097.660	-13.351	-14.190	19.484	226-44-44	269-59-32	12.334	-164.671234
27- 74	28787.300	-50111.850	11.909	-11.202	16.350	316-45-12	270-00-28	-13.058	-155.507722
27- 72	28799.209	-50123.052	11.414	12.130	16.656	46-44-29	269-59-17	-12.130	-138.451820
合計					70.013		1260-00-00		-629.126140
								1 / 2 面積	314.563070 314.563070

面積計算書

地番：27-2

PAGE 50

測点	X	Y	D X	D Y	距離	方向角	夾角	倍横距	倍面積
27- 62	28770.772	-50065.944	-0.378	0.561	0.676	123-58-51	272-27-19	0.561	-0.212058
27- 15	28770.394	-50065.383	-1.105	1.724	2.048	122-39-28	178-40-37	2.846	-3.144830
27- 16	28769.289	-50063.659	-1.042	1.689	1.985	121-40-19	179-00-51	6.259	-6.521878
27- 17	28768.247	-50061.970	-1.027	1.738	2.019	120-34-45	178-54-26	9.686	-9.947522
27- 18	28767.220	-50060.232	-1.002	1.754	2.020	119-44-16	179-09-31	13.178	-13.204356
27- 19	28766.218	-50058.478	-0.948	1.741	1.982	118-34-08	178-49-52	16.673	-15.806004
27- 20	28765.270	-50056.737	-0.916	1.789	2.010	117-06-48	178-32-40	20.203	-18.505948
27- 21	28764.354	-50054.948	-0.898	1.824	2.033	116-12-44	179-05-56	23.816	-21.386768
27- 22	28763.456	-50053.124	-0.849	1.820	2.008	115-00-30	178-47-46	27.460	-23.313540
27- 23	28762.607	-50051.304	-0.804	1.812	1.982	113-55-38	178-55-08	31.092	-24.997968
27- 24	28761.803	-50049.492	-0.023	0.056	0.060	112-35-45	178-40-07	32.960	-0.758080
27- 63	28761.780	-50049.436	-18.365	-8.788	20.358	205-34-16	272-58-31	24.228	-444.947220
27- 81	28743.415	-50058.224	10.004	-18.364	20.913	298-34-39	273-00-23	-2.924	-29.251696
27- 80	28753.419	-50076.588	17.353	10.644	20.358	31-31-32	272-56-53	-10.644	-184.705332
合計					80.452		2880-00-00	1/2 面積	-796.703200 398.351600 398.351600

面積計算書

地番； 27- 3

PAGE 51

測点	X	Y	D X	D Y	距離	方向角	夾角	倍横距	倍面積
27- 82	28746.529	-50056.734	15.251	7.298	16.907	25-34-16	278-49-51	7.298	111.301798
27- 63	28761.780	-50049.436	-0.749	1.799	1.949	112-35-45	267-01-29	16.395	-12.279855
27- 25	28761.031	-50047.637	-0.697	1.902	2.026	110-07-32	177-31-47	20.096	-14.006912
27- 26	28760.334	-50045.735	-0.746	1.849	1.994	111-58-20	181-50-48	23.847	-17.789862
27- 27	28759.588	-50043.886	-0.667	1.899	2.013	109-21-11	177-22-51	27.595	-18.405865
27- 28	28758.921	-50041.987	-0.622	1.909	2.008	108-02-49	178-41-38	31.403	-19.532666
27- 29	28758.299	-50040.078	-0.608	1.930	2.024	107-29-09	179-26-20	35.242	-21.427136
27- 30	28757.691	-50038.148	-1.852	6.156	6.429	106-44-22	179-15-13	43.328	-80.243456
27- 84	28755.839	-50031.992	-15.362	-4.621	16.042	196-44-24	270-00-02	44.863	-689.185406
27- 85	28740.477	-50036.613	6.052	-20.121	21.012	286-44-25	270-00-01	20.121	121.772292
合計					72.404		2160-00-00	1 / 2 面積	-639.797068 319.898534 319.898534

面積計算書

地番； 27- 4

測点	X	Y	D X	D Y	距離	方向角	夾角	倍橫距	倍面積
27- 64	28750.059	-50012.774	-4.457	14.820	15.476	106-44-22	269-05-02	14.820	-66.052740
27- 31	28745.602	-49997.954	-3.478	1.930	3.978	150-58-24	224-14-02	31.570	-109.800460
27- 32	28742.124	-49996.024	-31.103	-9.882	32.635	197-37-34	226-39-10	23.618	-734.590654
27- 33	28711.021	-50005.906	-2.426	-4.386	5.012	241-03-07	223-25-33	9.350	-22.683100
27- 34	28708.595	-50010.292	4.308	-14.309	14.943	286-45-23	225-42-16	-9.345	-40.258260
27- 65	28712.903	-50024.601	37.156	11.827	38.993	17-39-20	270-53-57	-11.827	-439.444012
合計					111.037		1440-00-00	1 / 2 面積	-1412.829226 706.414613 706.414613

面積計算書

地番； 27- 5

PAGE 53

測点	X	Y	D X	D Y	距離	方向角	夾角	倍横距	倍面積
27- 69	28800.651	-50097.660	-11.761	11.062	16.145	136-45-12	270-00-28	11.062	-130.100182
27- 71	28788.890	-50086.598	-13.350	-14.191	19.483	226-44-46	269-59-34	7.933	-105.905550
27- 73	28775.540	-50100.789	11.760	-11.061	16.145	316-45-09	270-00-23	-17.319	-203.671440
27- 74	28787.300	-50111.850	13.351	14.190	19.484	46-44-44	269-59-35	-14.190	-189.450690
合計					71.257		1080-00-00	1 / 2 面積	-629.127862 314.563931 314.563931

面積計算書

地番； 27- 6

測点	X	Y	D X	D Y	距離	方向角	夾角	倍橫距	倍面積
27- 71	28788.890	-50086.598	-3.032	2.852	4.163	136-45-14	270-00-25	2.852	-8.647264
27- 3	28785.858	-50083.746	-1.452	1.393	2.012	136-11-17	179-26-03	7.097	-10.304844
27- 4	28784.406	-50082.353	-1.421	1.419	2.008	135-02-25	178-51-08	9.909	-14.080689
27- 5	28782.985	-50080.934	-1.395	1.443	2.007	134-01-52	178-59-27	12.771	-17.815545
27- 6	28781.590	-50079.491	-1.348	1.449	1.979	132-55-55	178-54-03	15.663	-21.113724
27- 7	28780.242	-50078.042	-0.560	0.626	0.839	131-48-57	178-53-02	17.738	-9.933280
27- 75	28779.682	-50077.416	-15.988	-13.480	20.912	220-08-05	268-19-08	4.884	-78.085392
27- 90	28763.694	-50090.896	11.008	-10.784	15.409	315-35-19	275-27-14	-19.380	-213.335040
27- 79	28774.702	-50101.680	14.188	15.082	20.707	46-44-49	271-09-30	-15.082	-213.983416
合計					70.036		1980-00-00	1 / 2 面積	-587.299194 293.649597 293.649597

面積計算書

地番； 27- 7

測点	X	Y	D X	D Y	距離	方向角	夾角	倍横距	倍面積
27- 75	28779.682	-50077.416	-0.798	0.892	1.197	131-48-57	271-40-52	0.892	-0.711816
27- 8	28778.884	-50076.524	-1.298	1.502	1.985	130-49-59	179-01-02	3.286	-4.265228
27- 9	28777.586	-50075.022	-1.293	1.571	2.035	129-27-21	178-37-22	6.359	-8.222187
27- 10	28776.293	-50073.451	-1.219	1.561	1.981	127-59-12	178-31-51	9.491	-11.569529
27- 11	28775.074	-50071.890	-1.250	1.605	2.034	127-54-43	179-55-31	12.657	-15.821250
27- 12	28773.824	-50070.285	-1.169	1.607	1.987	126-02-01	178-07-18	15.869	-18.550861
27- 13	28772.655	-50068.678	-1.161	1.663	2.028	124-55-13	178-53-12	19.139	-22.220379
27- 14	28771.494	-50067.015	-0.722	1.071	1.292	123-58-51	179-03-38	21.873	-15.792306
27- 62	28770.772	-50065.944	-17.963	-11.018	21.073	211-31-32	267-32-41	11.926	-214.226738
27- 78	28752.809	-50076.962	10.168	-13.231	16.686	307-32-24	276-00-52	-12.323	-125.300264
27- 77	28762.977	-50090.193	0.717	-0.703	1.004	315-35-19	188-02-55	-26.257	-18.826269
27- 90	28763.694	-50090.896	15.988	13.480	20.912	40-08-05	264-32-46	-13.480	-215.518240
合計					74.214		2520-00-00	1 / 2 面積	-671.025067 335.5125335 335.5125335

面積計算書

地番； 27- 8

PAGE 56

測点	X	Y	D X	D Y	距離	方向角	夾角	倍横距	倍面積
27- 64	28750.059	-50012.774	-15.289	-4.866	16.045	197-39-20	270-54-58	-4.866	74.396274
27- 83	28734.770	-50017.640	5.707	-18.973	19.812	286-44-25	269-05-05	-28.705	-163.819435
27- 85	28740.477	-50036.613	15.362	4.621	16.042	16-44-24	269-59-59	-43.057	-661.441634
27- 84	28755.839	-50031.992	-5.780	19.218	20.068	106-44-22	269-59-58	-19.218	111.080040
合計					71.967		1080-00-00	1 / 2 面積	-639.784755 319.8923775 319.8923775

面積計算書

地番； 27- 9

PAGE 57

測点	X	Y	D X	D Y	距離	方向角	夾角	倍横距	倍面積
27- 86	28738.838	-50031.165	-4.068	13.525	14.123	106-44-25	269-58-56	13.525	-55.019700
27- 83	28734.770	-50017.640	-21.867	-6.961	22.948	197-39-20	270-54-55	20.089	-439.286163
27- 65	28712.903	-50024.601	3.968	-13.178	13.763	286-45-23	269-06-03	-0.050	-0.198400
27- 87	28716.871	-50037.779	21.967	6.614	22.941	16-45-29	270-00-06	-6.614	-145.289738
合計					73.775		1080-00-00	1 / 2 面積	-639.794001 319.8970005 319.8970005

面積計算書

地番； 27-10

PAGE 58

測点	X	Y	D X	D Y	距離	方向角	夾角	倍横距	倍面積
27- 86	28738.838	-50031.165	-21.967	-6.614	22.941	196-45-29	270-01-04	-6.614	145.289738
27- 87	28716.871	-50037.779	1.603	-5.324	5.560	286-45-23	269-59-54	-18.552	-29.738856
27- 35	28718.474	-50043.103	1.075	-3.490	3.652	287-07-12	180-21-49	-27.366	-29.418450
27- 36	28719.549	-50046.593	1.143	-3.466	3.650	288-15-05	181-07-53	-34.322	-39.230046
27- 37	28720.692	-50050.059	0.665	-1.867	1.982	289-35-30	181-20-25	-39.655	-26.370575
27- 89	28721.357	-50051.926	21.251	8.227	22.789	21-09-50	271-34-20	-33.295	-707.552045
27- 88	28742.608	-50043.699	-3.770	12.534	13.089	106-44-25	265-34-35	-12.534	47.253180
合計					73.663		1620-00-00		-639.767054
								1 / 2 面積	319.883527 319.883527

面積計算書

地番； 27-11

PAGE 59

測点	X	Y	D X	D Y	距離	方向角	夾角	倍横距	倍面積
27- 38	28721.916	-50053.498	1.297	-3.412	3.650	290-48-48	181-13-18	-3.412	-4.425364
27- 39	28723.213	-50056.910	1.372	-3.369	3.638	292-09-30	181-20-42	-10.193	-13.984796
27- 40	28724.585	-50060.279	1.462	-3.344	3.650	293-36-54	181-27-24	-16.906	-24.716572
27- 41	28726.047	-50063.623	1.086	-2.392	2.627	294-24-32	180-47-38	-22.642	-24.589212
27- 66	28727.133	-50066.015	19.396	9.281	21.503	25-34-16	271-09-44	-15.753	-305.545188
27- 82	28746.529	-50056.734	-3.921	13.035	13.612	106-44-25	261-10-09	6.563	-25.733523
27- 88	28742.608	-50043.699	-21.251	-8.227	22.789	201-09-50	274-25-25	11.371	-241.645121
27- 89	28721.357	-50051.926	0.559	-1.572	1.668	289-35-30	268-25-40	1.572	0.878748
合計					73.137		1800-00-00	1 / 2 面積	-639.761028 319.880514 319.880514

面積計算書

地番； 27-12

PAGE 60

測点	X	Y	D X	D Y	距離	方向角	夾角	倍横距	倍面積
27- 66	28727.133	-50066.015	0.427	-0.942	1.034	294-24-32	268-50-16	-0.942	-0.402234
27- 42	28727.560	-50066.957	1.605	-3.288	3.659	296-01-08	181-36-36	-5.172	-8.301060
27- 43	28729.165	-50070.245	1.665	-3.245	3.647	297-09-44	181-08-36	-11.705	-19.488825
27- 44	28730.830	-50073.490	1.737	-3.208	3.648	298-26-01	181-16-17	-18.158	-31.540446
27- 45	28732.567	-50076.698	1.819	-3.165	3.650	299-53-13	181-27-12	-24.531	-44.621889
27- 46	28734.386	-50079.863	1.885	-3.125	3.649	301-05-54	181-12-41	-30.821	-58.097585
27- 47	28736.271	-50082.988	1.887	-2.962	3.512	302-29-43	181-23-49	-36.908	-69.645396
27- 67	28738.158	-50085.950	15.261	9.362	17.904	31-31-32	269-01-49	-30.508	-465.582588
27- 80	28753.419	-50076.588	-10.004	18.364	20.913	118-34-39	267-03-07	-2.782	27.831128
27- 81	28743.415	-50058.224	-16.282	-7.791	18.051	205-34-16	266-59-37	7.791	-126.853062
合計					79.667		2160-00-00	1 / 2 面積	-796.701957 398.3509785 398.3509785

面積計算書

地番； 27-13

PAGE 61

測点	X	Y	D X	D Y	距離	方向角	夾角	倍横距	倍面積
27- 67	28738.158	-50085.950	0.064	-0.101	0.120	302-29-43	270-58-11	-0.101	-0.006464
27- 48	28738.222	-50086.051	2.024	-3.022	3.637	303-48-45	181-19-02	-3.224	-6.525376
27- 49	28740.246	-50089.073	2.098	-3.008	3.667	304-53-41	181-04-56	-9.254	-19.414892
27- 50	28742.344	-50092.081	2.138	-2.934	3.630	306-04-51	181-11-10	-15.196	-32.489048
27- 51	28744.482	-50095.015	2.227	-2.902	3.658	307-30-10	181-25-19	-21.032	-46.838264
27- 52	28746.709	-50097.917	2.292	-2.848	3.656	308-49-35	181-19-25	-26.782	-61.384344
27- 53	28749.001	-50100.765	0.593	-0.712	0.927	309-48-13	180-58-38	-30.342	-17.992806
27- 76	28749.594	-50101.477	13.383	11.284	17.505	40-08-09	270-19-56	-19.770	-264.581910
27- 77	28762.977	-50090.193	-10.168	13.231	16.686	127-32-24	267-24-15	4.745	-48.247160
27- 78	28752.809	-50076.962	-14.651	-8.988	17.189	211-31-32	263-59-08	8.988	-131.683188
合計					70.675		2160-00-00	1 / 2 面積	-629.163452 314.581726 314.581726

面積計算書

地番； 27-14

PAGE 62

測点	X	Y	D X	D Y	距離	方向角	夾角	倍横距	倍面積
27- 76	28749.594	-50101.477	1.731	-2.077	2.704	309-48-13	269-40-04	-2.077	-3.595287
27- 54	28751.325	-50103.554	2.416	-2.750	3.661	311-18-03	181-29-50	-6.904	-16.680064
27- 55	28753.741	-50106.304	2.469	-2.673	3.639	312-43-41	181-25-38	-12.327	-30.435363
27- 56	28756.210	-50108.977	2.542	-2.617	3.648	314-10-02	181-26-21	-17.617	-44.782414
27- 57	28758.752	-50111.594	2.604	-2.584	3.668	315-13-15	181-03-13	-22.818	-59.418072
27- 58	28761.356	-50114.178	0.838	-0.795	1.155	316-30-15	181-17-00	-26.197	-21.953086
27- 70	28762.194	-50114.973	12.508	13.293	18.252	46-44-43	270-14-28	-13.699	-171.347092
27- 79	28774.702	-50101.680	-11.725	11.487	16.414	135-35-19	268-50-36	11.081	-129.924725
27- 77	28762.977	-50090.193	-13.383	-11.284	17.505	220-08-09	264-32-50	11.284	-151.013772
合計					70.646		1980-00-00	1 / 2 面積	-629.149875 314.5749375 314.5749375

面積計算書

地番； 27-15

PAGE 63

測点	X	Y	D X	D Y	距離	方向角	夾角	倍横距	倍面積
27- 74	28787.300	-50111.850	-11.760	11.061	16.145	136-45-09	270-00-21	11.061	-130.077360
27- 73	28775.540	-50100.789	-13.346	-14.184	19.476	226-44-46	269-59-37	7.938	-105.940548
27- 70	28762.194	-50114.973	1.800	-1.708	2.481	316-30-15	269-45-29	-7.954	-14.317200
27- 59	28763.994	-50116.681	9.954	-9.360	13.664	316-45-40	180-15-25	-19.022	-189.344988
27- 68	28773.948	-50126.041	13.352	14.191	19.485	46-44-48	269-59-08	-14.191	-189.478232
合計					71.251		1260-00-00		-629.158328
								1/2 面積	314.579164 314.579164

面積計算書

地番； 27-16

測点	X	Y	DX	DY	距離	方向角	夾角	倍横距	倍面積
27- 72	28799.209	-50123.052	-11.909	11.202	16.350	136-45-12	270-00-43	11.202	-133.404618
27- 74	28787.300	-50111.850	-13.352	-14.191	19.485	226-44-48	269-59-36	8.213	-109.659976
27- 68	28773.948	-50126.041	9.807	-9.222	13.461	316-45-40	270-00-52	-15.200	-149.066400
27- 60	28783.755	-50135.263	4.003	0.042	4.003	0-36-04	223-50-24	-24.380	-97.593140
27- 61	28787.758	-50135.221	11.451	12.169	16.710	46-44-29	226-08-25	-12.169	-139.347219
合計					70.009		1260-00-00	1 / 2 面積	-629.071353 314.5356765 314.5356765