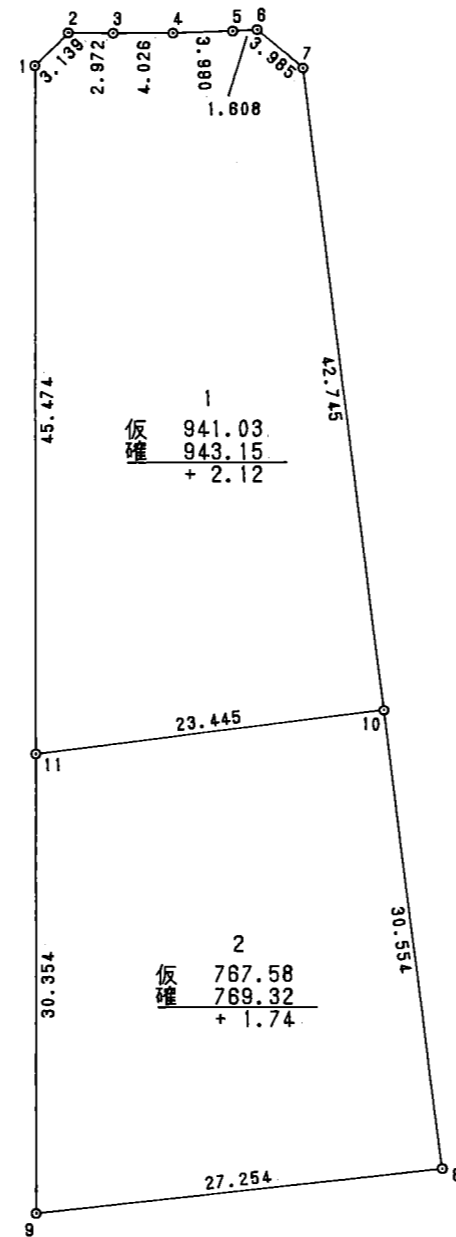
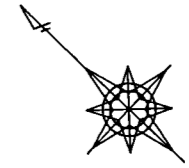


# 換地 図

# 30 街区



## 面積計算書

地番； 30- 1

測点	X	Y	D X	D Y	距離	方向角	夾角	倍横距	倍面積
30- 1	28709.698	-50153.788	-0.118	3.137	3.139	92-09-36	225-36-46	3.137	-0.370166
30- 2	28709.580	-50150.651	-2.176	2.024	2.972	137-04-22	224-54-46	8.298	-18.056448
30- 3	28707.404	-50148.627	-2.914	2.778	4.026	136-22-07	179-17-45	13.100	-38.173400
30- 4	28704.490	-50145.849	-2.799	2.844	3.990	134-32-35	178-10-28	18.722	-52.402878
30- 5	28701.691	-50143.005	-1.096	1.176	1.608	132-59-00	178-26-25	22.742	-24.925232
30- 6	28700.595	-50141.829	-3.977	0.260	3.985	176-15-34	223-16-34	24.178	-96.155906
30- 7	28696.618	-50141.569	-33.057	-27.099	42.745	219-20-36	223-05-02	-2.661	87.964677
30- 10	28663.561	-50168.668	14.863	-18.131	23.445	309-20-35	269-59-59	-47.891	-711.803933
30- 11	28678.424	-50186.799	31.274	33.011	45.474	46-32-50	277-12-15	-33.011	-1032.386014
合計					131.384		1980-00-00	1 / 2 面積	-1886.309300 943.154650 943.154650

面積計算書

地番； 30- 2

測点	X	Y	D X	D Y	距離	方向角	夾角	倍横距	倍面積
30- 8	28639.931	-50188.038	17.616	-20.796	27.254	310-16-03	270-55-27	-20.796	-366.342336
30- 9	28657.547	-50208.834	20.877	22.035	30.354	46-32-50	276-16-47	-19.557	-408.291489
30- 11	28678.424	-50186.799	-14.863	18.131	23.445	129-20-35	262-47-45	20.609	-306.311567
30- 10	28663.561	-50168.668	-23.630	-19.370	30.554	219-20-36	270-00-01	19.370	-457.713100
合計					111.607		1080-00-00	1 / 2 面積	-1538.658492 769.329246 769.329246