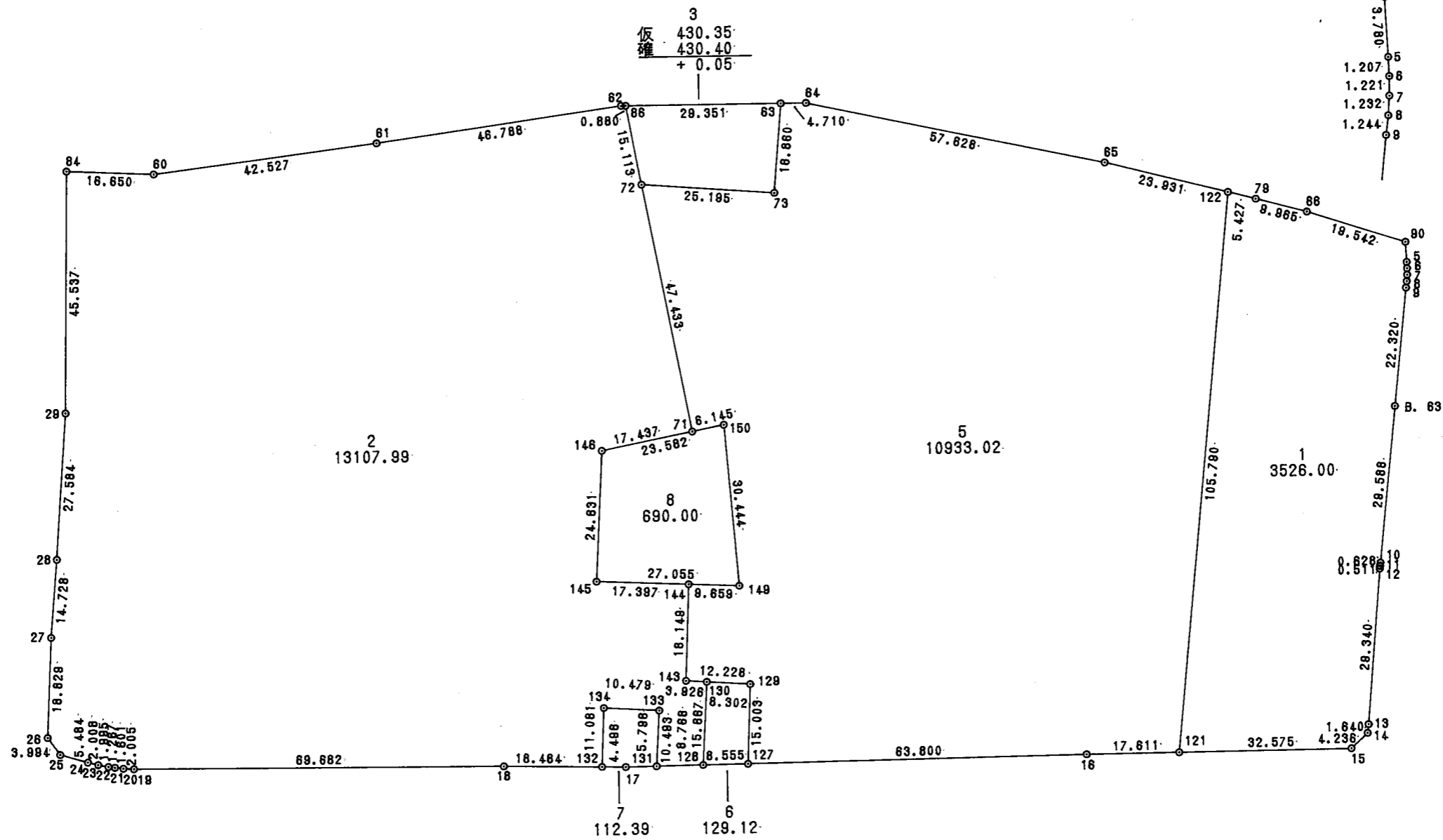
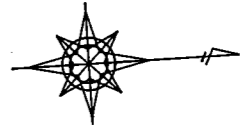


# 换地 图

# 42 街区



## 面積計算書

地番； 42- 1

測点	X	Y	D X	D Y	距離	方向角	夾角	倍横距	倍面積
42- 79	29015.325	-49877.571	9.501	3.006	9.965	17-33-24	180-27-51	3.006	28.560006
42- 66	29024.826	-49874.565	18.286	6.893	19.542	20-39-12	183-05-48	12.905	235.980830
42- 90	29043.112	-49867.672	0.001	3.780	3.780	89-58-59	249-19-47	23.578	0.023578
42- 5	29043.113	-49863.892	-0.006	1.207	1.207	90-17-05	180-18-06	28.565	-0.171390
42- 6	29043.107	-49862.685	-0.075	1.219	1.221	93-31-15	183-14-10	30.991	-2.324325
42- 7	29043.032	-49861.466	-0.144	1.224	1.232	96-42-35	183-11-20	33.434	-4.814496
42- 8	29042.888	-49860.242	-0.218	1.225	1.244	100-05-26	183-22-51	35.883	-7.822494
42- 9	29042.670	-49859.017	-3.477	22.047	22.320	98-57-45	178-52-19	59.155	-205.681935
B. 63	29039.193	-49836.970	-4.616	29.226	29.588	98-58-30	180-00-45	110.428	-509.735648
42- 10	29034.577	-49807.744	-0.097	0.620	0.628	98-53-31	179-55-01	140.274	-13.606578
42- 11	29034.480	-49807.124	-0.074	0.506	0.511	98-19-13	179-25-42	141.400	-10.463600
42- 12	29034.406	-49806.618	-3.996	29.067	29.340	97-49-40	179-30-27	170.973	-683.208108
42- 13	29030.410	-49777.551	-0.253	1.620	1.640	98-52-35	181-02-55	201.660	-51.019980
42- 14	29030.157	-49775.931	-3.267	2.697	4.236	140-27-34	221-34-59	205.977	-672.926859
42- 15	29026.890	-49773.234	-32.547	-1.327	32.575	182-20-07	221-52-33	207.347	-6748.522809
42-121	28994.343	-49774.561	15.795	-104.605	105.790	278-35-13	276-15-06	101.415	1601.849925
42-122	29010.138	-49879.166	5.187	1.595	5.427	17-05-33	278-30-20	-1.595	-8.273265
合計					270.246		3420-00-00	1 / 2 面積	-7052.006998 3526.003499 3526.003499

## 面積計算書

地番； 42- 2

測点	X	Y	D X	D Y	距離	方向角	夾角	倍橫距	倍面積
42-131	28895.678	-49778.264	1.118	-10.433	10.493	276-06-47	274-00-11	-10.433	-11.664094
42-133	28896.796	-49788.697	-10.418	-1.135	10.479	186-12-54	90-06-07	-22.001	229.206418
42-134	28886.378	-49789.832	-0.977	11.038	11.081	95-03-29	88-50-35	-12.098	11.819746
42-132	28885.401	-49778.794	-18.438	-1.301	18.484	184-02-15	268-58-46	-2.361	43.532118
42- 18	28866.963	-49780.095	-69.580	-3.767	69.682	183-05-56	179-03-41	-7.429	516.909820
42- 19	28797.383	-49783.862	-1.992	-0.225	2.005	186-26-40	183-20-44	-11.421	22.750632
42- 20	28795.391	-49784.087	-1.579	-0.266	1.601	189-33-44	183-07-04	-11.912	18.809048
42- 21	28793.812	-49784.353	-1.244	-0.238	1.267	190-49-51	181-16-07	-12.416	15.445504
42- 22	28792.568	-49784.591	-1.938	-0.472	1.995	193-41-16	182-51-25	-13.126	25.438188
42- 23	28790.630	-49785.063	-1.921	-0.584	2.008	196-54-35	183-13-19	-14.182	27.243622
42- 24	28788.709	-49785.647	-5.194	-1.759	5.484	198-42-33	181-47-58	-16.525	85.830850
42- 25	28783.515	-49787.406	-2.204	-3.331	3.994	236-30-32	217-47-59	-21.615	47.639460
42- 26	28781.311	-49790.737	1.767	-18.746	18.829	275-23-05	218-52-33	-43.692	-77.203764
42- 27	28783.078	-49809.483	1.904	-14.604	14.728	277-25-41	182-02-36	-77.042	-146.687968
42- 28	28784.982	-49824.087	3.257	-27.391	27.584	276-46-52	179-21-11	-119.037	-387.703509
42- 29	28788.239	-49851.478	2.839	-45.448	45.537	273-34-26	176-47-34	-191.876	-544.735964
42- 84	28791.078	-49896.926	16.574	1.578	16.650	5-26-19	271-51-53	-235.746	-3907.254204
42- 60	28807.652	-49895.348	42.401	-3.275	42.527	355-35-00	170-08-41	-237.443	-10067.820643
42- 61	28850.053	-49898.623	46.613	-4.043	46.788	355-02-36	179-27-36	-244.761	-11409.044493
42- 62	28896.666	-49902.666	0.879	0.042	0.880	2-42-40	187-40-04	-248.762	-218.661798
42- 86	28897.545	-49902.624	2.058	14.972	15.113	82-10-29	259-27-49	-233.748	-481.053384
42- 72	28899.603	-49887.652	6.646	46.965	47.433	81-56-43	179-46-14	-171.811	-1141.855906
42- 71	28906.249	-49840.687	-17.254	2.521	17.437	171-41-18	269-44-35	-122.325	2110.595550
42-146	28888.995	-49838.166	-2.516	24.502	24.631	95-51-46	104-10-28	-95.302	239.779832

面積計算書

地番； 42- 2

測点	X	Y	D X	D Y	距離	方向角	夾角	倍橫距	倍面積
42-145	28886.479	-49813.664	17.322	1.616	17.397	5-19-46	89-28-00	-69.184	-1198.405248
42-144	28903.801	-49812.048	-1.620	18.076	18.149	95-07-17	269-47-31	-49.492	80.177040
42-143	28902.181	-49793.972	3.899	0.450	3.926	6-35-18	91-28-01	-30.966	-120.736434
42-130	28906.080	-49793.522	-1.640	15.581	15.667	96-00-38	269-25-20	-14.935	24.493400
42-128	28904.440	-49777.941	-8.762	-0.323	8.768	182-06-36	266-05-58	0.323	-2.830126
合計					520.617		5580-00-00	1 / 2 面積	-26215.986307 13107.9931535 13107.9931535

面積計算書

地番； 42- 3

測点	X	Y	D X	D Y	距離	方向角	夾角	倍横距	倍面積
42- 63	28926.862	-49901.216	-2.261	16.708	16.860	97-42-30	274-57-30	16.708	-37.784398
42- 73	28924.601	-49884.508	-24.998	-3.144	25.195	187-10-03	269-27-33	30.272	-756.731711
42- 72	28899.603	-49887.652	-2.058	-14.972	15.113	262-10-29	255-00-26	12.156	-25.013580
42- 86	28897.545	-49902.624	29.317	1.408	29.351	2-45-00	280-34-31	-1.408	-41.283860
合計					86.519		1080-00-00		-860.813550
								1 / 2 面積	430.406775 430.406775

面積計算書

地番； 42- 5

測点	X	Y	D X	D Y	距離	方向角	夾角	倍橫距	倍面積
42- 16	28976.746	-49775.279	-63.757	-2.347	63.800	182-06-30	179-46-23	-2.347	149.637679
42-127	28912.989	-49777.626	1.339	-14.944	15.003	275-07-07	273-00-37	-19.638	-26.295282
42-129	28914.328	-49792.570	-12.147	-1.402	12.228	186-35-06	91-27-59	-35.984	437.097648
42-143	28902.181	-49793.972	1.620	-18.076	18.149	275-07-17	268-32-11	-55.462	-89.848440
42-144	28903.801	-49812.048	9.617	0.897	9.659	5-19-46	270-12-29	-72.641	-698.588497
42-149	28913.418	-49811.151	-1.089	-30.424	30.444	267-57-03	82-37-17	-102.168	111.260952
42-150	28912.329	-49841.575	-6.080	0.888	6.145	171-41-12	83-44-09	-131.704	800.760320
42- 71	28906.249	-49840.687	-6.646	-46.965	47.433	261-56-43	270-15-31	-177.781	1181.532526
42- 72	28899.603	-49887.652	24.998	3.144	25.195	7-10-03	285-13-20	-221.602	-5539.606796
42- 73	28924.601	-49884.508	2.261	-16.708	16.860	277-42-30	90-32-27	-235.166	-531.710326
42- 63	28926.862	-49901.216	4.704	0.226	4.710	2-44-53	265-02-23	-251.648	-1183.752192
42- 64	28931.566	-49900.990	55.698	14.790	57.628	14-52-18	192-07-25	-236.632	-13179.929136
42- 65	28987.264	-49886.200	22.874	7.034	23.931	17-05-33	182-13-15	-214.808	-4913.518192
42-122	29010.138	-49879.166	-15.795	104.605	105.790	98-35-13	261-29-40	-103.169	1629.554355
42-121	28994.343	-49774.561	-17.597	-0.718	17.611	182-20-07	263-44-54	0.718	-12.634646
合計					454.586		3060-00-00		-21866.040027
								1 / 2	10933.0200135
								面積	10933.0200135

## 面積計算書

地番； 42- 6

測点	X	Y	DX	DY	距離	方向角	夾角	倍横距	倍面積
42-127	28912.989	-49777.626	-8.549	-0.315	8.555	182-06-27	266-59-20	-0.315	2.692935
42-128	28904.440	-49777.941	1.640	-15.581	15.667	276-00-38	273-54-11	-16.211	-26.586040
42-130	28906.080	-49793.522	8.248	0.952	8.302	6-35-01	270-34-23	-30.840	-254.368320
42-129	28914.328	-49792.570	-1.339	14.944	15.003	95-07-07	268-32-06	-14.944	20.010016
合計					47.527		1080-00-00	1 / 2 面積	-258.251409 129.1257045 129.1257045

## 面積計算書

地番； 42- 7

測点	X	Y	DX	DY	距離	方向角	夾角	倍横距	倍面積
42-131	28895.678	-49778.264	-5.792	-0.213	5.796	182-06-32	265-59-45	-0.213	1.233696
42- 17	28889.886	-49778.477	-4.485	-0.317	4.496	184-02-15	181-55-43	-0.743	3.332355
42-132	28885.401	-49778.794	0.977	-11.038	11.081	275-03-29	271-01-14	-12.098	-11.819746
42-134	28886.378	-49789.832	10.418	1.135	10.479	6-12-54	271-09-25	-22.001	-229.206418
42-133	28896.796	-49788.697	-1.118	10.433	10.493	96-06-47	269-53-53	-10.433	11.664094
合計					42.345		1260-00-00		-224.796019
								1/2 面積	112.3980095 112.3980095



面積計算書

地番； 42- 8

測点	X	Y	D X	D Y	距離	方向角	夾角	倍橫距	倍面積
42-145	28886.479	-49813.664	2.516	-24.502	24.631	275-51-46	270-32-00	-24.502	-61.647032
42-146	28888.995	-49838.166	23.334	-3.409	23.582	351-41-17	255-49-31	-52.413	-1223.004942
42-150	28912.329	-49841.575	1.089	30.424	30.444	87-57-03	276-15-46	-25.398	-27.658422
42-149	28913.418	-49811.151	-26.939	-2.513	27.055	185-19-46	277-22-43	2.513	-67.697707
合計					105.712		1080-00-00		-1380.008103
								1 / 2 面積	690.0040515 690.0040515