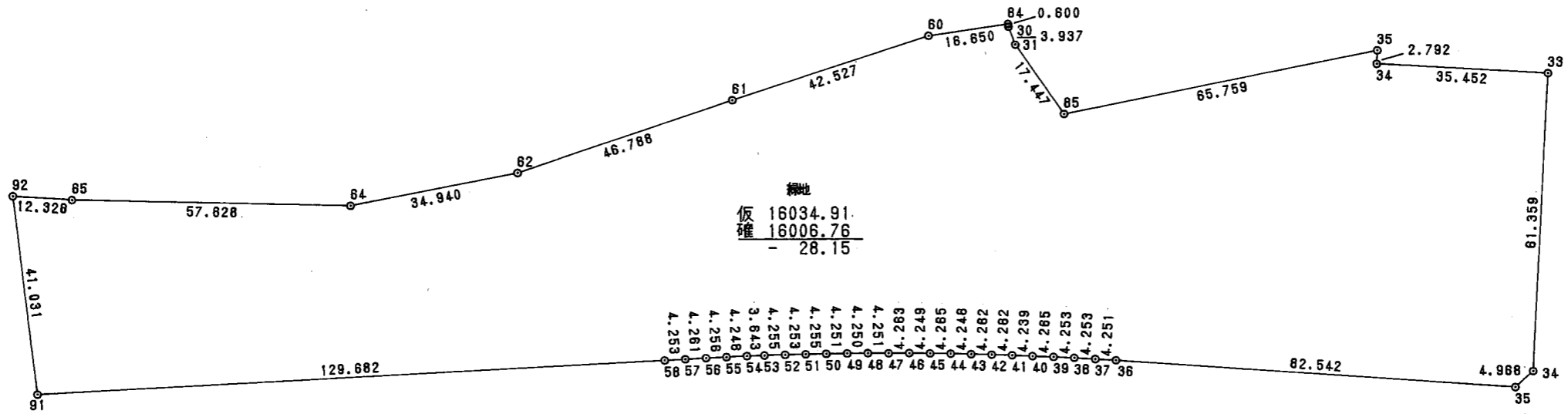
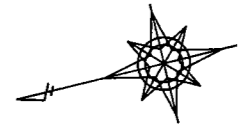


換 地 図

緑 地



面積計算書

地番； 緑地

測点	X	Y	D X	D Y	距離	方向角	夾角	倍横距	倍面積
42- 65	28987.264	-49886.200	-55.697	-14.790	57.628	194-52-18	177-44-26	-14.790	823.788385
42- 64	28931.566	-49900.990	-34.900	-1.676	34.940	182-44-56	167-52-38	-31.257	1090.855147
42- 62	28896.666	-49902.666	-46.613	4.043	46.788	175-02-36	172-17-40	-28.889	1346.631499
42- 61	28850.053	-49898.623	-42.401	3.275	42.527	175-35-00	180-32-24	-21.572	914.660577
42- 60	28807.652	-49895.348	-16.575	-1.578	16.650	185-26-19	189-51-19	-19.875	329.416861
42- 84	28791.078	-49896.926	0.037	-0.599	0.600	273-34-26	268-08-07	-22.052	-0.824771
42- 30	28791.115	-49897.525	-0.470	-3.909	3.937	263-08-38	169-34-12	-26.559	12.482938
42- 31	28790.645	-49901.434	-6.358	-16.247	17.447	248-37-39	165-29-01	-46.716	297.034554
42- 85	28784.287	-49917.681	-65.705	-2.665	65.759	182-19-23	113-41-44	-65.629	4312.132595
40- 35	28718.582	-49920.347	0.803	-2.674	2.792	286-42-54	284-23-31	-70.968	-56.987423
40- 34	28719.385	-49923.021	-33.925	-10.295	35.452	196-52-51	90-09-57	-83.937	2847.537367
40- 33	28685.460	-49933.316	17.671	-58.759	61.359	286-44-16	269-51-25	-152.991	-2703.497658
42- 34	28703.131	-49992.075	4.386	-2.333	4.968	331-59-26	225-15-10	-214.083	-938.969980
42- 35	28707.517	-49994.408	78.662	25.011	82.542	17-38-18	225-38-52	-191.405	-15056.334947
42- 36	28786.179	-49969.397	4.058	1.265	4.251	17-18-50	179-40-32	-165.129	-670.095279
42- 37	28790.237	-49968.132	4.068	1.240	4.253	16-57-08	179-38-18	-162.624	-661.556233
42- 38	28794.305	-49966.892	4.075	1.218	4.253	16-38-28	179-41-20	-160.166	-652.678254
42- 39	28798.380	-49965.674	4.096	1.189	4.265	16-11-14	179-32-46	-157.759	-646.182678
42- 40	28802.476	-49964.485	4.075	1.168	4.239	15-59-37	179-48-23	-155.402	-633.264954
42- 41	28806.551	-49963.317	4.102	1.155	4.262	15-43-32	179-43-55	-153.079	-627.931874
42- 42	28810.653	-49962.162	4.112	1.120	4.262	15-14-11	179-30-39	-150.804	-620.107869
42- 43	28814.765	-49961.042	4.103	1.092	4.246	14-54-13	179-40-02	-148.592	-609.674793
42- 44	28818.868	-49959.950	4.127	1.075	4.265	14-36-00	179-41-47	-146.425	-604.297802
42- 45	28822.995	-49958.875	4.117	1.050	4.249	14-18-28	179-42-28	-144.300	-594.084923

面積計算書

地番； 緑地

測点	X	Y	D X	D Y	距離	方向角	夾角	倍横距	倍面積
42- 46	28827.112	-49957.825	4.139	1.021	4.263	13-51-25	179-32-57	-142.229	-588.687664
42- 47	28831.251	-49956.804	4.135	0.985	4.251	13-23-55	179-32-30	-140.223	-579.823936
42- 48	28835.386	-49955.819	4.138	0.968	4.250	13-09-59	179-46-04	-138.270	-572.163092
42- 49	28839.524	-49954.851	4.143	0.950	4.251	12-54-53	179-44-54	-136.352	-564.908170
42- 50	28843.667	-49953.901	4.153	0.924	4.255	12-32-36	179-37-43	-134.478	-558.488973
42- 51	28847.820	-49952.977	4.156	0.902	4.253	12-14-43	179-42-07	-132.652	-551.303552
42- 52	28851.976	-49952.075	4.163	0.878	4.255	11-54-34	179-39-51	-130.872	-544.821979
42- 53	28856.139	-49951.197	3.568	0.736	3.643	11-39-19	179-44-45	-129.258	-461.194124
42- 54	28859.707	-49950.461	4.167	0.816	4.246	11-04-47	179-25-28	-127.706	-532.152747
42- 55	28863.874	-49949.645	4.181	0.796	4.256	10-46-45	179-41-58	-126.094	-527.200865
42- 56	28868.055	-49948.849	4.187	0.788	4.261	10-39-31	179-52-46	-124.510	-521.325224
42- 57	28872.242	-49948.061	4.180	0.784	4.253	10-37-23	179-57-52	-122.938	-513.882691
42- 58	28876.422	-49947.277	127.449	23.962	129.682	10-38-53	180-01-30	-98.192	-12514.557572
42- 91	29003.871	-49923.315	-4.829	40.746	41.031	96-45-33	266-06-40	-33.485	161.701915
42- 92	28999.042	-49882.569	-11.779	-3.631	12.326	197-07-52	280-22-19	3.631	-42.763807
合計					749.410		7380-00-00		-32013.522004
								1/2 面積	16006.761002 16006.761002