

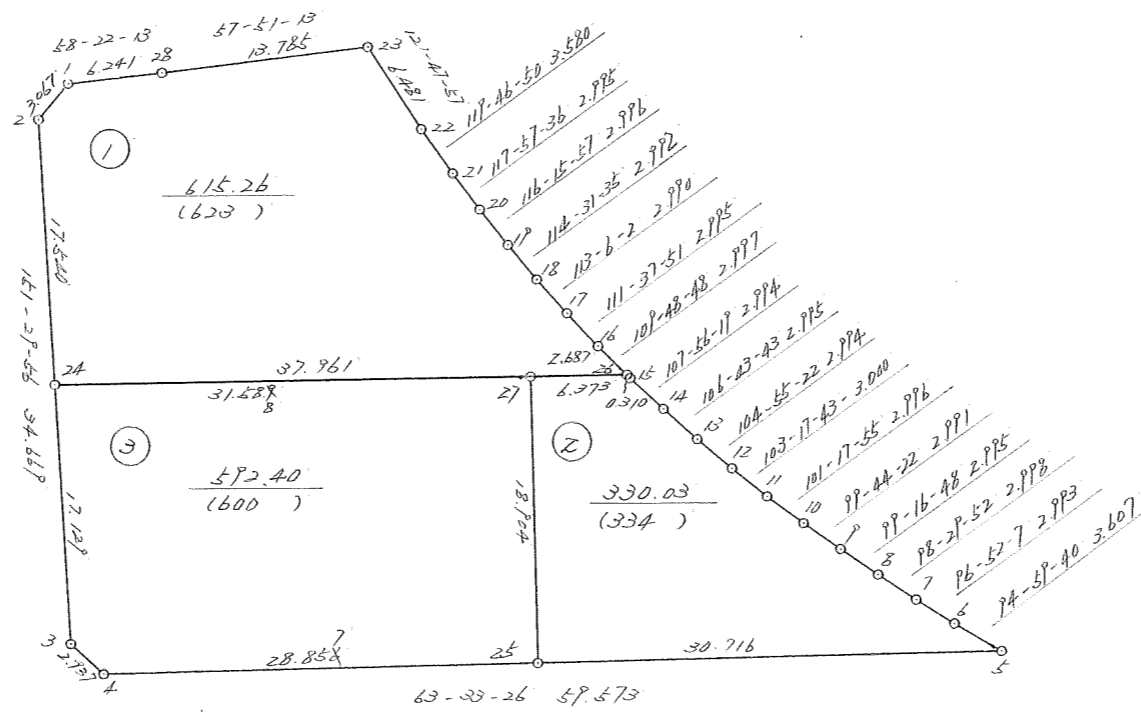
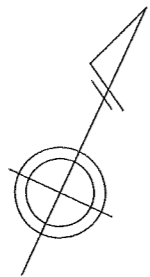
画地原子一览表

街区番号 (46)

街区面积 = 1537.72

换地面积 = 1537.69

[Δf] = -0.03



1/500

倍 橫 距 法 面 積 計 算 書

地番;46- 1

機械点	測角	方向角	距離	COS.	SIN.	DX	DY	X	Y	測点	倍橫距	倍面積
46-28		238-22-13						32137.637	-42511.777	46- 1		
46- 1	136-16-07	194-38-20	3.067	-0.967538	-0.252726	-2.967	-0.775	32134.670	-42512.552	46- 2	-0.775	2.299425
46- 2	136-51-31	151-29-51	17.540	-0.878796	0.477197	-15.414	8.370	32119.256	-42504.182	46-24	6.820	-105.123480
46-24	92-30-40	64-00-31	37.961	0.438236	0.898860	16.636	34.122	32135.892	-42470.060	46-26)	49.312	820.354432
46-26)	45-48-31	289-49-02	2.687	0.339021	-0.940779	0.911	-2.528	32136.803	-42472.588	46-16	80.906	73.705366
46-16	181-48-49	291-37-51	2.995	0.368625	-0.929578	1.104	-2.784	32137.907	-42475.372	46-17	75.594	83.455776
46-17	181-28-11	293-06-02	2.990	0.392346	-0.919818	1.173	-2.750	32139.080	-42478.122	46-18	70.060	82.180380
46-18	181-25-33	294-31-35	2.992	0.415112	-0.909770	1.242	-2.722	32140.322	-42480.844	46-19	64.588	80.218296
46-19	181-44-22	296-15-57	2.996	0.442537	-0.896750	1.326	-2.687	32141.648	-42483.531	46-20	59.179	78.471354
46-20	181-41-39	297-57-36	2.995	0.468855	-0.883275	1.404	-2.645	32143.052	-42486.176	46-21	53.847	75.601188
46-21	181-49-14	299-46-50	3.580	0.496679	-0.867934	1.778	-3.107	32144.830	-42489.283	46-22	48.095	85.512910
46-22	182-01-07	301-47-57	6.481	0.526943	-0.849900	3.415	-5.508	32148.245	-42494.791	46-23	39.480	134.824200
46-23	116-03-16	237-51-13	13.785	-0.532084	-0.846691	-7.335	-11.672	32140.910	-42506.463	46-28	22.300	-163.570500
46-28	180-31-00	238-22-13	6.241	-0.524428	-0.851455	-3.273	-5.314	32137.637	-42511.777	46- 1	5.314	-17.392722
合計	1980-00-00		106.310			0.000	0.000					1230.536625
											面積	615.2683125

倍 橫 距 法 面 積 計 算 書

地番;46- 2

機械点	測角	方向角	距離	COS.	SIN.	DX	DY	X	Y	測点	倍橫距	倍面積
46-26		244-00-21						32133.099	-42475.788	46-27		
46-27	89-33-04	153-33-25	18.904	-0.895377	0.445308	-16.926	8.418	32116.173	-42467.370	46-25	8.418	-142.483068
46-25	90-00-02	63-33-27	30.716	0.445299	0.895382	13.678	27.503	32129.851	-42439.867	46- 5	44.339	606.468842
46- 5	31-26-13	274-59-40	3.607	0.087059	-0.996203	0.314	-3.593	32130.165	-42443.460	46- 6	68.249	21.430186
46- 6	181-52-27	276-52-07	2.993	0.119593	-0.992823	0.358	-2.972	32130.523	-42446.432	46- 7	61.684	22.082872
46- 7	181-37-45	278-29-52	2.998	0.147771	-0.989022	0.443	-2.965	32130.966	-42449.397	46- 8	55.747	24.695921
46- 8	180-46-56	279-16-48	2.995	0.161259	-0.986912	0.483	-2.956	32131.449	-42452.353	46- 9	49.826	24.065958
46- 9	180-27-34	279-44-22	2.991	0.169168	-0.985587	0.506	-2.948	32131.955	-42455.301	46-10	43.922	22.224532
46-10	181-33-33	281-17-55	2.996	0.195922	-0.980619	0.587	-2.938	32132.542	-42458.239	46-11	38.036	22.327132
46-11	181-59-48	283-17-43	3.000	0.229970	-0.973198	0.690	-2.920	32133.232	-42461.159	46-12	32.178	22.202820
46-12	181-37-39	284-55-22	2.994	0.257517	-0.966274	0.771	-2.893	32134.003	-42464.052	46-13	26.365	20.327415
46-13	181-48-21	286-43-43	2.995	0.287839	-0.957679	0.862	-2.868	32134.865	-42466.920	46-14	20.604	17.760648
46-14	181-12-36	287-56-19	2.994	0.307998	-0.951387	0.922	-2.848	32135.787	-42469.768	46-15	14.888	13.726736
46-15	181-50-22	289-46-41	0.310	0.338378	-0.941010	0.105	-0.292	32135.892	-42470.060	46-26	11.748	1.233540
46-26	134-13-40	244-00-21	6.373	-0.438280	-0.898839	-2.793	-5.728	32133.099	-42475.788	46-27	5.728	-15.998304
合計	2160-00-00		86.866			0.000	0.000					660.065230
											面積	330.032615

倍 橫 距 法 面 積 計 算 書

地番;46- 3

機械点	測角	方向角	距離	COS.	SIN.	DX	DY	X	Y	測点	倍橫距	倍面積
46-27		244-00-33						32119.256	-42504.182	46-24		
46-24	87-29-28	151-30-01	17.129	-0.878819	0.477154	-15.053	8.173	32104.203	-42496.009	46- 3	8.173	-123.028169
46- 3	135-56-07	107-26-08	2.937	-0.299633	0.954055	-0.880	2.802	32103.323	-42493.207	46- 4	19.148	-16.850240
46- 4	136-07-16	63-33-24	28.856	0.445312	0.895375	12.850	25.837	32116.173	-42467.370	46-25	47.787	614.062950
46-25	90-00-01	333-33-25	18.904	0.895377	-0.445308	16.926	-8.418	32133.099	-42475.788	46-27	65.206	1103.676756
46-27	90-27-08	244-00-33	31.589	-0.438227	-0.898864	-13.843	-28.394	32119.256	-42504.182	46-24	28.394	-393.058142
合計	540-00-00		99.415			0.000	0.000					1184.803155

面積 592.4015775

1.00147