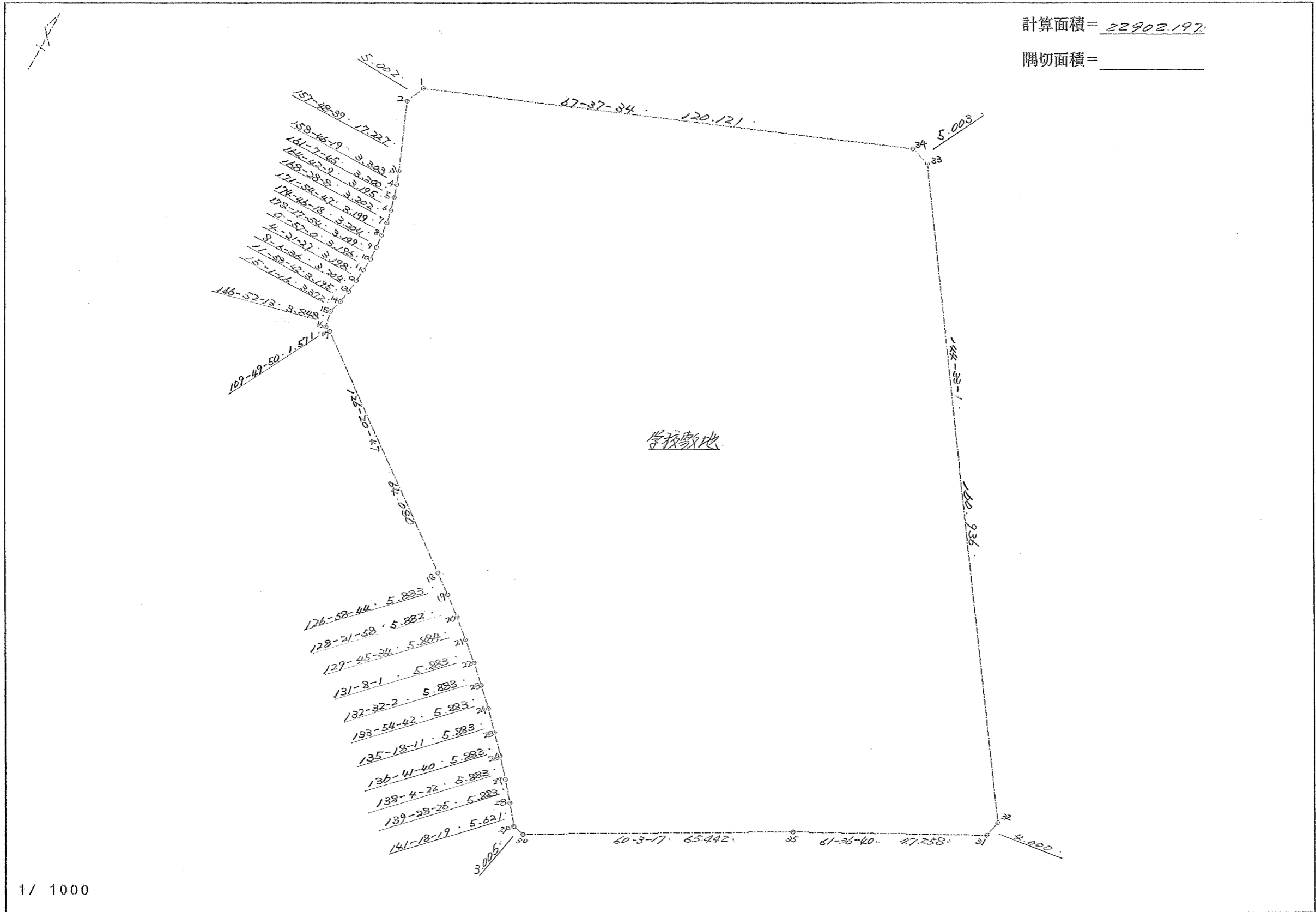


街区原子一覽表

街区番号 ( 62 )

計算面積 = 22902.197

隔切面積 = \_\_\_\_\_



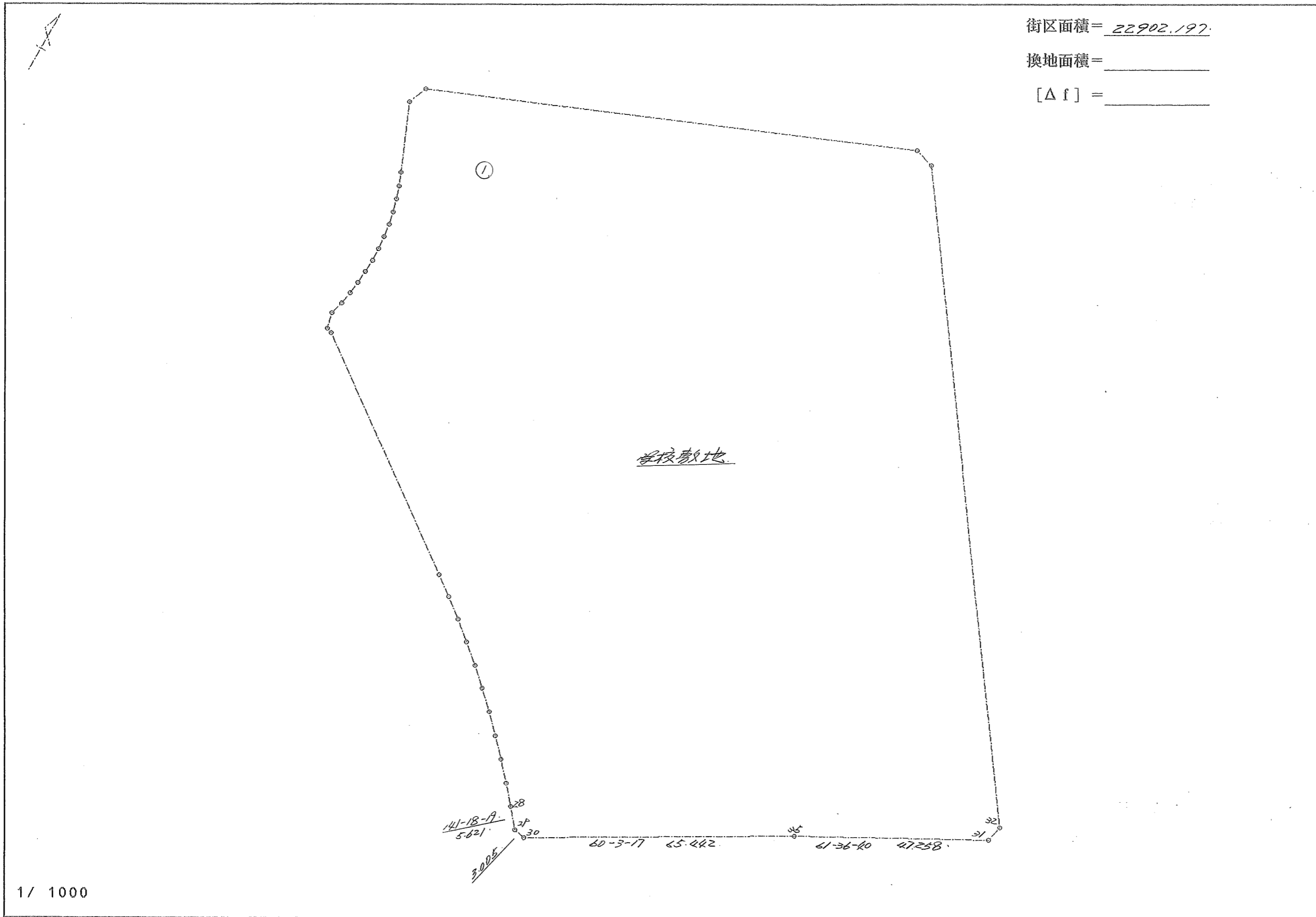
画地原子一覽表

街区番号 ( 62 )

街区面積 = 22902.197

換地面積 = \_\_\_\_\_

[ $\Delta f$ ] = \_\_\_\_\_



倍 橫 距 面 積 計 算

62BL

視 点	測 点	方 向 角	距 離	DX	DY	X	Y	倍橫距	倍 面 積
BL- 62- 1	BL- 62- 2	202 14 15	5.002	-4.630	-1.893	32198.344	-42272.553	-112.971	523.055730
BL- 62- 2	BL- 62- 3	157 48 39	17.227	-15.951	6.506	32182.393	-42266.047	-108.358	1728.418458
BL- 62- 3	BL- 62- 4	158 46 19	3.303	-3.079	1.196	32179.314	-42264.851	-100.656	309.919824
BL- 62- 4	BL- 62- 5	161 7 45	3.200	-3.028	1.035	32176.286	-42263.816	-98.425	298.030900
BL- 62- 5	BL- 62- 6	164 42 9	3.195	-3.082	0.843	32173.204	-42262.973	-96.547	297.557854
BL- 62- 6	BL- 62- 7	168 28 8	3.202	-3.137	0.640	32170.067	-42262.333	-95.064	298.215768
BL- 62- 7	BL- 62- 8	171 54 47	3.199	-3.167	0.450	32166.900	-42261.883	-93.974	297.615658
BL- 62- 8	BL- 62- 9	174 46 18	3.204	-3.191	0.292	32163.709	-42261.591	-93.232	297.503312
BL- 62- 9	BL- 62-10	178 17 54	3.199	-3.198	0.095	32160.511	-42261.496	-92.845	296.918310
BL- 62-10	BL- 62-11	180 57 0	3.196	-3.196	-0.053	32157.315	-42261.549	-92.803	296.598388
BL- 62-11	BL- 62-12	184 21 27	3.198	-3.189	-0.243	32154.126	-42261.792	-93.099	296.892711
BL- 62-12	BL- 62-13	188 6 36	3.204	-3.172	-0.452	32150.954	-42262.244	-93.794	297.514568
BL- 62-13	BL- 62-14	191 58 42	3.195	-3.125	-0.663	32147.829	-42262.907	-94.909	296.590625
BL- 62-14	BL- 62-15	195 1 16	3.372	-3.257	-0.874	32144.572	-42263.781	-96.446	314.124622
BL- 62-15	BL- 62-16	166 52 13	3.848	-3.747	0.874	32140.825	-42262.907	-96.446	361.383162
BL- 62-16	BL- 62-17	109 49 50	1.571	-0.533	1.478	32140.292	-42261.429	-94.094	50.152102
BL- 62-17	BL- 62-18	126 20 47	64.080	-37.978	51.613	32102.314	-42209.816	-41.003	1557.211934
BL- 62-18	BL- 62-19	126 58 44	5.883	-3.539	4.700	32098.775	-42205.116	15.310	-54.182090
BL- 62-19	BL- 62-20	128 21 58	5.882	-3.651	4.612	32095.124	-42200.504	24.622	-89.894922
BL- 62-20	BL- 62-21	129 45 34	5.884	-3.763	4.523	32091.361	-42195.981	33.757	-127.027591
BL- 62-21	BL- 62-22	131 8 1	5.883	-3.870	4.431	32087.491	-42191.550	42.711	-165.291570
BL- 62-22	BL- 62-23	132 32 2	5.883	-3.977	4.335	32083.514	-42187.215	51.477	-204.724029

倍 橫 距 面 積 計 算

62BL

視 点	測 点	方 向 角	距 離	DX	DY	X	Y	倍橫距	倍 面 積
BL- 62-23	BL- 62-24	133 54 42	5.883	-4.080	4.238	32079.434	-42182.977	60.050	-245.004000
BL- 62-24	BL- 62-25	135 18 11	5.883	-4.182	4.138	32075.252	-42178.839	68.426	-286.157532
BL- 62-25	BL- 62-26	136 41 40	5.883	-4.281	4.035	32070.971	-42174.804	76.599	-327.920319
BL- 62-26	BL- 62-27	138 4 22	5.883	-4.377	3.931	32066.594	-42170.873	84.565	-370.141005
BL- 62-27	BL- 62-28	139 28 25	5.883	-4.472	3.823	32062.122	-42167.050	92.319	-412.850568
BL- 62-28	BL- 62-29	141 18 19	5.621	-4.387	3.514	32057.735	-42163.536	99.656	-437.190872
BL- 62-29	BL- 62-30	100 42 2	3.005	-0.558	2.953	32057.177	-42160.583	106.123	-59.216634
BL- 62-30	BL- 62-35	60 3 17	65.442	32.667	56.706	32089.844	-42103.877	165.782	5415.600594
BL- 62-35	BL- 62-31	61 36 40	47.258	22.469	41.575	32112.313	-42062.302	264.063	5933.231547
BL- 62-31	BL- 62-32	12 34 37	4.000	3.904	0.871	32116.217	-42061.431	306.509	1196.611136
BL- 62-32	BL- 62-33	324 33 1	160.936	131.103	-93.341	32247.320	-42154.772	214.039	28061.155017
BL- 62-33	BL- 62-34	285 59 11	5.003	1.378	-4.810	32248.698	-42159.582	115.888	159.693664
BL- 62-34	BL- 62- 1	247 37 34	120.121	-45.724	-111.078	32202.974	-42270.660	0.000	0.000000
								合 計	45804.394752
								1/2	22902.1973760
								面 積	22902.19 M*M