

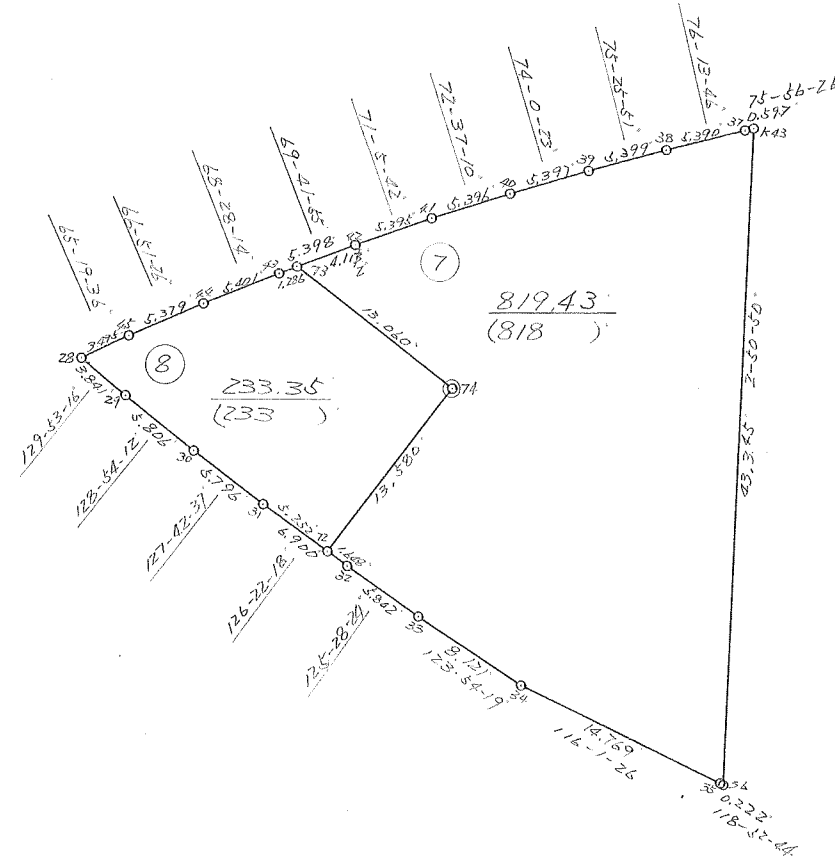
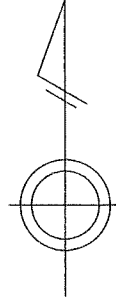
画地原子一览表

街区番号 (109-2)

街区面积 = 1052.79

换地面积 = 1052.78

[Δf] = -0.01



倍 橫 距 法 面 積 計 算 書

地番;109- 7

機械点	測角	方向角	距離	COS.	SIN.	DX	DY	X	Y	測点	倍橫距	倍面積
109-42		249-41-48						31921.897	-41809.593	109-73		
109-73	58-24-44	128-06-32	13.060	-0.617158	0.786839	-8.060	10.276	31913.837	-41799.317	109-74	10.276	-82.824560
109-74	269-49-46	217-56-18	13.580	-0.788673	-0.614813	-10.710	-8.349	31903.127	-41807.666	109-72	12.203	-130.694130
109-72	88-25-26	126-21-44	1.648	-0.592888	0.805285	-0.977	1.327	31902.150	-41806.339	109-32	5.181	-5.061837
109-32	179-06-40	125-28-24	5.802	-0.580324	0.814386	-3.367	4.725	31898.783	-41801.614	109-33	11.233	-37.821511
109-33	178-25-55	123-54-19	8.121	-0.557822	0.829961	-4.530	6.740	31894.253	-41794.874	109-34	22.698	-102.821940
109-34	172-07-07	116-01-26	14.769	-0.438746	0.898611	-6.480	13.272	31887.773	-41781.602	109-35	42.710	-276.760800
109-35	182-51-18	118-52-44	0.222	-0.482960	0.875643	-0.107	0.194	31887.666	-41781.408	109-36	56.176	-6.010832
109-36	63-58-06	2-50-50	43.345	0.998766	0.049673	43.291	2.153	31930.957	-41779.255	K.43	58.523	2533.519193
K.43	73-05-36	255-56-26	0.597	-0.242928	-0.970044	-0.145	-0.579	31930.812	-41779.834	109-37	60.097	-8.714065
109-37	180-17-20	256-13-46	5.390	-0.238034	-0.971257	-1.283	-5.235	31929.529	-41785.069	109-38	54.283	-69.645089
109-38	179-12-05	255-25-51	5.399	-0.251549	-0.967845	-1.358	-5.225	31928.171	-41790.294	109-39	43.823	-59.511634
109-39	178-34-32	254-00-23	5.397	-0.275530	-0.961292	-1.487	-5.188	31926.684	-41795.482	109-40	33.410	-49.680670
109-40	178-36-47	252-37-10	5.396	-0.298717	-0.954342	-1.612	-5.150	31925.072	-41800.632	109-41	23.072	-37.192064
109-41	178-28-32	251-05-42	5.395	-0.324000	-0.946057	-1.748	-5.104	31923.324	-41805.736	109-42	12.818	-22.405864
109-42	178-36-06	249-41-48	4.113	-0.346990	-0.937869	-1.427	-3.857	31921.897	-41809.593	109-73	3.857	-5.503939
合計	2340-00-00		132.234			0.000	0.000					1638.870258
											面積	819.435129

倍 橫 距 法 面 積 計 算 書

地番;109- 8 (保)

機械点	測角	方向角	距離	COS.	SIN.	DX	DY	X	Y	測点	倍橫距	倍面積
109-45		245-19-36						31915.896	-41823.945	109-28		
109-28	64-33-40	129-53-16	3.841	-0.641286	0.767302	-2.463	2.947	31913.433	-41820.998	109-29	2.947	-7.258461
109-29	179-00-56	128-54-12	5.806	-0.628008	0.778207	-3.646	4.518	31909.787	-41816.480	109-30	10.412	-37.962152
109-30	178-48-25	127-42-37	5.796	-0.611669	0.791114	-3.545	4.585	31906.242	-41811.895	109-31	19.515	-69.180675
109-31	178-39-52	126-22-29	5.252	-0.593064	0.805156	-3.115	4.229	31903.127	-41807.666	109-72	28.329	-88.244835
109-72	91-33-49	37-56-18	13.580	0.788673	0.614813	10.710	8.349	31913.837	-41799.317	109-74	40.907	438.113970
109-74	90-10-14	308-06-32	13.060	0.617158	-0.786839	8.060	-10.276	31921.897	-41809.593	109-73	38.980	314.178800
109-73	121-35-45	249-42-17	1.286	-0.346858	-0.937918	-0.446	-1.206	31921.451	-41810.799	109-43	27.498	-12.264108
109-43	178-45-57	248-28-14	5.401	-0.366979	-0.930229	-1.982	-5.024	31919.469	-41815.823	109-44	21.268	-42.153176
109-44	178-23-12	246-51-26	5.379	-0.393024	-0.919528	-2.114	-4.946	31917.355	-41820.769	109-45	11.298	-23.883972
109-45	178-28-10	245-19-36	3.495	-0.417444	-0.908703	-1.459	-3.176	31915.896	-41823.945	109-28	3.176	-4.633784
合計	1440-00-00		62.896			0.000	0.000					466.711607
											面積	233.3558035