

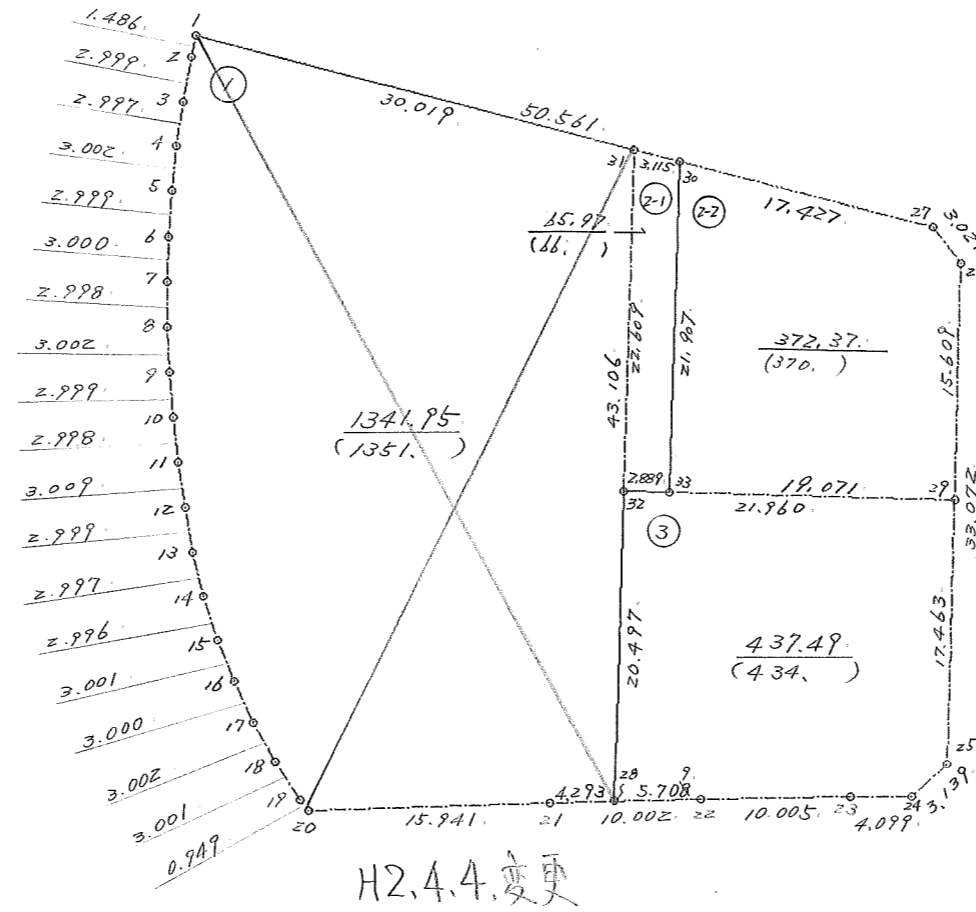
画地原子一覽表

街区番号 (35BL)

街区面積 = 2217.79

換地面積 = 2217.78

[Δf] = -0.01



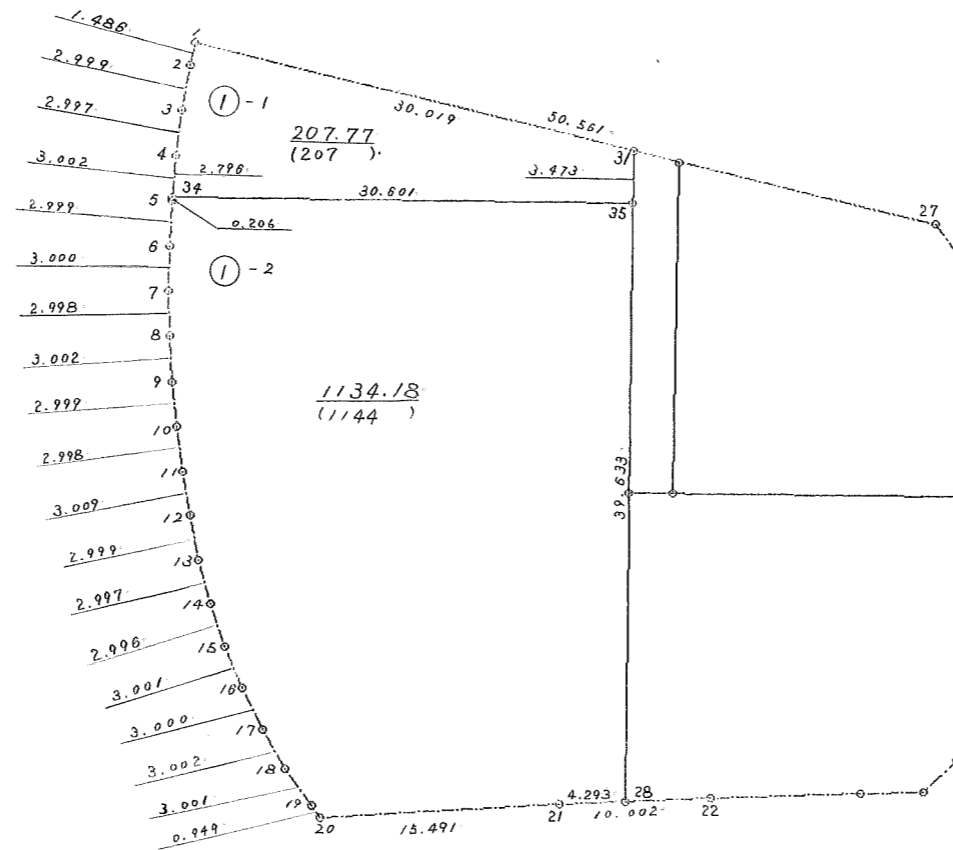
画地原子一览表

街区番号 (35)

街区面積 = _____

換地面積 = _____

[Δf] = _____



面積計算【倍横距法】

画地番号 1-1

測点	視点	X	Y	方向角	距離	DX	DY	倍横距	倍面積
BL- 35-31	BL- 35- 1	32224.936	-42475.565	254 42 30	30.019	-7.917	-28.956	-30.598	242.244366
BL- 35- 1	BL- 35- 2	32217.019	-42504.521	162 44 8	1.486	-1.419	0.441	-59.113	83.881347
BL- 35- 2	BL- 35- 3	32215.600	-42504.080	161 7 48	2.999	-2.838	0.970	-57.702	163.758276
BL- 35- 3	BL- 35- 4	32212.762	-42503.110	158 30 39	2.997	-2.789	1.098	-55.634	155.163226
BL- 35- 4	BL- 35-34	32209.973	-42502.012	156 21 19	2.796	-2.561	1.121	-53.415	136.795815
BL- 35-34	BL- 35-35	32207.412	-42500.891	61 47 37	30.601	14.463	26.968	-25.326	-366.289938
BL- 35-35	BL- 35-31	32221.875	-42473.923	331 47 37	3.473	3.061	-1.642	0.000	0.000000
								合計	415.553092
								1/2	207.7765460

面積計算【倍横距法】

画地番号 1-2

測点	視点	X	Y	方向角	距離	DX	DY	倍横距	倍面積
BL- 35-34	BL- 35- 5	32207.412	-42500.891	156 21 19	0.206	-0.189	0.083	-26.885	5.081265
BL- 35- 5	BL- 35- 6	32207.223	-42500.808	153 53 16	2.999	-2.693	1.320	-25.482	68.623026
BL- 35- 6	BL- 35- 7	32204.530	-42499.488	151 56 24	3.000	-2.647	1.411	-22.751	60.221897
BL- 35- 7	BL- 35- 8	32201.883	-42498.077	149 49 34	2.998	-2.592	1.507	-19.833	51.407136
BL- 35- 8	BL- 35- 9	32199.291	-42496.570	147 41 50	3.002	-2.537	1.604	-16.722	42.423714
BL- 35- 9	BL- 35-10	32196.754	-42494.966	145 35 2	2.999	-2.474	1.695	-13.423	33.208502
BL- 35-10	BL- 35-11	32194.280	-42493.271	143 13 5	2.998	-2.401	1.795	-9.933	23.849133
BL- 35-11	BL- 35-12	32191.879	-42491.476	141 35 2	3.009	-2.358	1.870	-6.268	14.779944
BL- 35-12	BL- 35-13	32189.521	-42489.606	139 53 46	2.999	-2.294	1.932	-2.466	5.657004
BL- 35-13	BL- 35-14	32187.227	-42487.674	135 47 3	2.997	-2.148	2.090	1.556	-3.342288
BL- 35-14	BL- 35-15	32185.079	-42485.584	132 5 28	2.996	-2.008	2.223	5.869	-11.784952
BL- 35-15	BL- 35-16	32183.071	-42483.361	128 42 38	3.001	-1.877	2.342	10.434	-19.584618
BL- 35-16	BL- 35-17	32181.194	-42481.019	124 29 23	3.000	-1.699	2.473	15.249	-25.908051
BL- 35-17	BL- 35-18	32179.495	-42478.546	120 34 16	3.002	-1.527	2.585	20.307	-31.008789
BL- 35-18	BL- 35-19	32177.968	-42475.961	115 44 12	3.001	-1.303	2.703	25.595	-33.350285
BL- 35-19	BL- 35-20	32176.665	-42473.258	113 32 22	0.949	-0.379	0.870	29.168	-11.054672
BL- 35-20	BL- 35-21	32176.286	-42472.388	58 5 15	15.941	8.427	13.532	43.570	367.164390
BL- 35-21	BL- 35-28	32184.713	-42458.856	58 36 46	4.293	2.236	3.665	60.767	135.875012
BL- 35-28	BL- 35-35	32186.949	-42455.191	331 47 37	39.633	34.926	-18.732	45.700	1596.118200
BL- 35-35	BL- 35-34	32221.875	-42473.923	241 47 37	30.601	-14.463	-26.968	0.000	0.000000
								合計	2268.375568
								1/2	1134.1877840

点検面積 1341.9643300 M2

倍 橫 距 面 積 計 算 (保)

2-1

視 点	測 点	方 向 角	距 離	DX	DY	X	Y	倍橫距	倍 面 積
BL- 35-31	BL- 35-32	151 47 37	22.609	-19.924	10.686	32205.012	-42464.879	7.681	-153.036244
BL- 35-32	BL- 35-33	61 40 11	2.889	1.371	2.543	32206.383	-42462.336	20.910	28.667610
BL- 35-33	BL- 35-30	332 10 47	21.907	19.375	-10.224	32225.758	-42472.560	13.229	256.311875
BL- 35-30	BL- 35-31	254 42 5	3.115	-0.822	-3.005	32224.936	-42475.565	0.000	0.000000
								合 計	131.943241
								1/2	65.9716205
								面 積	65.97 M*M

倍 橫 距 面 積 計 算

2-2

視 点	測 点	方 向 角	距 離	DX	DY	X	Y	倍橫距	倍 面 積
BL- 35-30	BL- 35-33	152 10 47	21.907	-19.375	10.224	32206.383	-42462.336	-6.586	127.603750
BL- 35-33	BL- 35-29	61 40 14	19.071	9.050	16.787	32215.433	-42445.549	20.425	184.846250
BL- 35-29	BL- 35-26	331 35 46	15.609	13.730	-7.425	32229.163	-42452.974	29.787	408.975510
BL- 35-26	BL- 35-27	293 13 16	3.021	1.191	-2.776	32230.354	-42455.750	19.586	23.326926
BL- 35-27	BL- 35-30	254 42 31	17.427	-4.596	-16.810	32225.758	-42472.560	0.000	0.000000
								合 計	744.752436
								1/2	372.3762180
								面 積	372.37 M*M

倍 橫 距 面 積 計 算

3

視 点	測 点	方 向 角	距 離	DX	DY	X	Y	倍橫距	倍 面 積
BL- 35-32	BL- 35-28	151 47 36	20.497	-18.063	9.688	32186.949	-42455.191	-9.642	174.163446
BL- 35-28	BL- 35-22	58 36 46	5.708	2.973	4.873	32189.922	-42450.318	4.919	14.624187
BL- 35-22	BL- 35-23	59 24 2	10.005	5.093	8.612	32195.015	-42441.706	18.404	93.731572
BL- 35-23	BL- 35-24	59 54 49	4.099	2.055	3.547	32197.070	-42438.159	30.563	62.806965
BL- 35-24	BL- 35-25	16 58 7	3.139	3.002	0.916	32200.072	-42437.243	35.026	105.148052
BL- 35-25	BL- 35-29	331 35 56	17.463	15.361	-8.306	32215.433	-42445.549	27.636	424.516596
BL- 35-29	BL- 35-32	241 40 14	21.960	-10.421	-19.330	32205.012	-42464.879	0.000	0.000000
								合 計	874.990818
								1/2	437.4954090
								面 積	437.49 M*M