

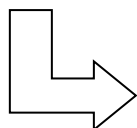
School Aid System Guide



~ Reducing the Burden of School Costs ~

School Aid System “*Shugaku Enjo Seido*” in Ota City is a program which helps families who have financial concerns with children (in elementary or junior high school) and partially covers public school costs. Eligible families will be financially supported for expenses such as **school meals, supplies, school supplies for their new school, extracurricular activities, school excursion, and medical costs.**

For example...



● **School supply fees for their new school (fees for purchasing items needed for a new school such as a school bag “*randoseru*” and uniform) will be covered before starting school.**

◆ Amount of grants (per child)

• Children scheduled to enter elementary school **57,000 yen**

• Children scheduled to enter junior high school (6th graders) **70,000 yen**

● **You will no longer be required to pay for school meals after the approved day** (payments will be conducted by the Board of Education).

Eligible Households

Households (including divided households but are still under one household) that are applicable if they meet either of the following conditions

1. Households exempt from municipal inhabitant taxes
2. Households that have problems with school costs due to financial reasons, and are below the standard income.

Standard Income for Eligible Households << reference amounts >>

No. of people	Household Structure	Standard Income	Income subtracted by basic deductions, etc.
2	Father (or mother) and elementary student	2,710,000 yen	1,710,000 yen
3	Father (or mother), elementary student, and preschooler	3,270,000 yen	2,100,000 yen
4	Father, mother, elementary student, and preschooler	3,960,000 yen	2,620,000 yen
5	Father, mother, junior high student, elementary student, and preschooler	4,710,000 yen	3,220,000 yen

Note: The standard incomes listed in the chart should only be used as a reference and may change / differ depending on the household's age, living situation, etc.

For those who wish to apply

Please contact your school for an application if you wish to apply for the school aid system. Eligibility will be decided based on the application, and there will be a comprehensive check on your living conditions.

Children's Learning Support Program

We provide this program for children from the 5th grade of elementary school to the 3rd grade of junior high school from households receiving public assistance “*Seikatsu Hogo*” or school aid, with the aim of improving their basic academic skills. Please contact the Social Assistance Division (TEL: 0276-47-1957) for details on dates, times, locations, etc.

Information:

For School Aid System;

Ota Board of Education,

School Education Division Management Section “*Gakkou Kyouiku-Ka Kanri-Kakari*” Tel: 0276-20-7084

For Children's Learning Support Program;

Ota City Hall (South Government Building 1F),

Welfare and Children's Affairs Department, Social Assistance Division “*Shakai Shien-Ka*” Tel. 0276-47-1957