

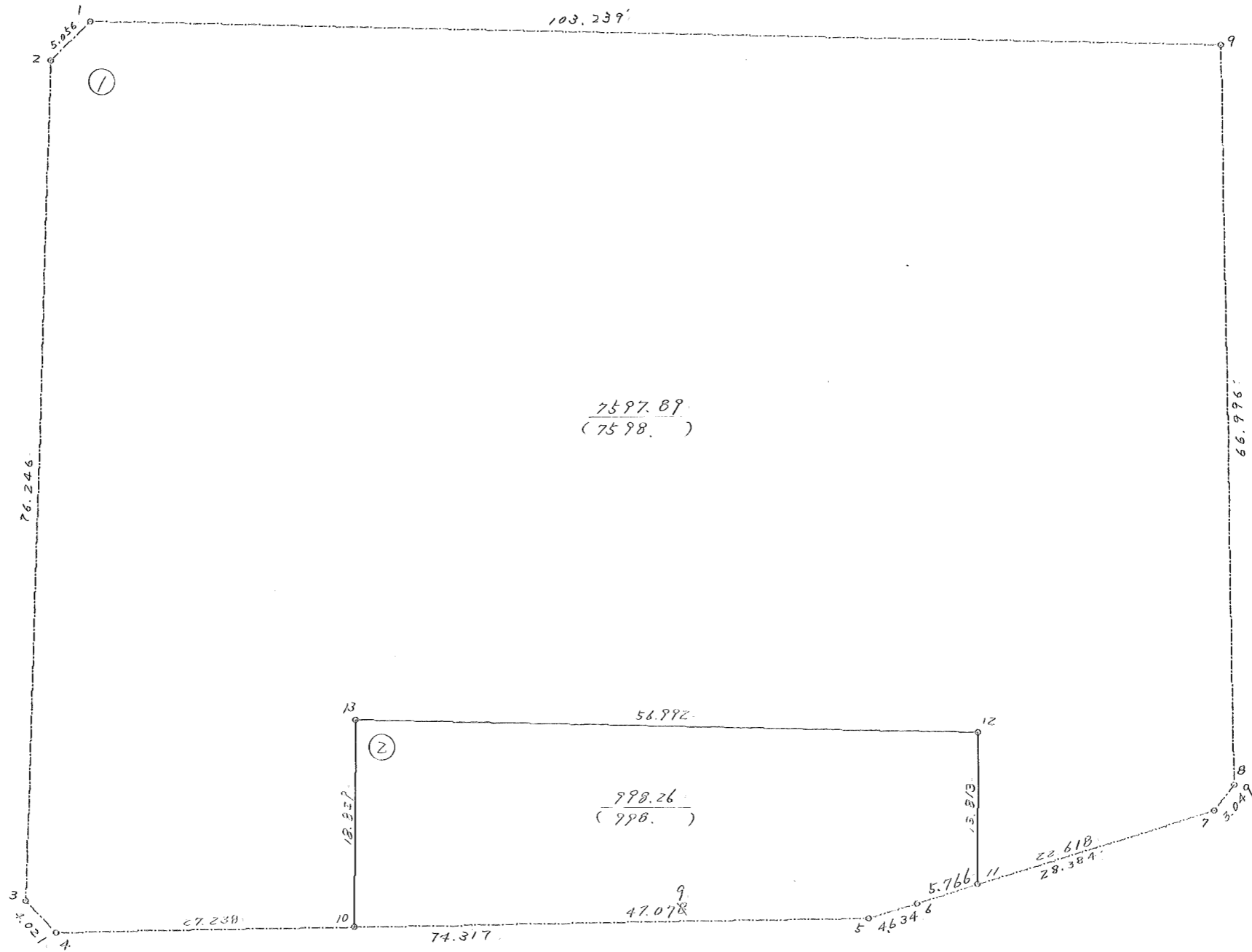
画地原子一覽表

街区番号 (16BL)

街区面積 = 8596.15

換地面積 = 8596.15

[Δf] = 0



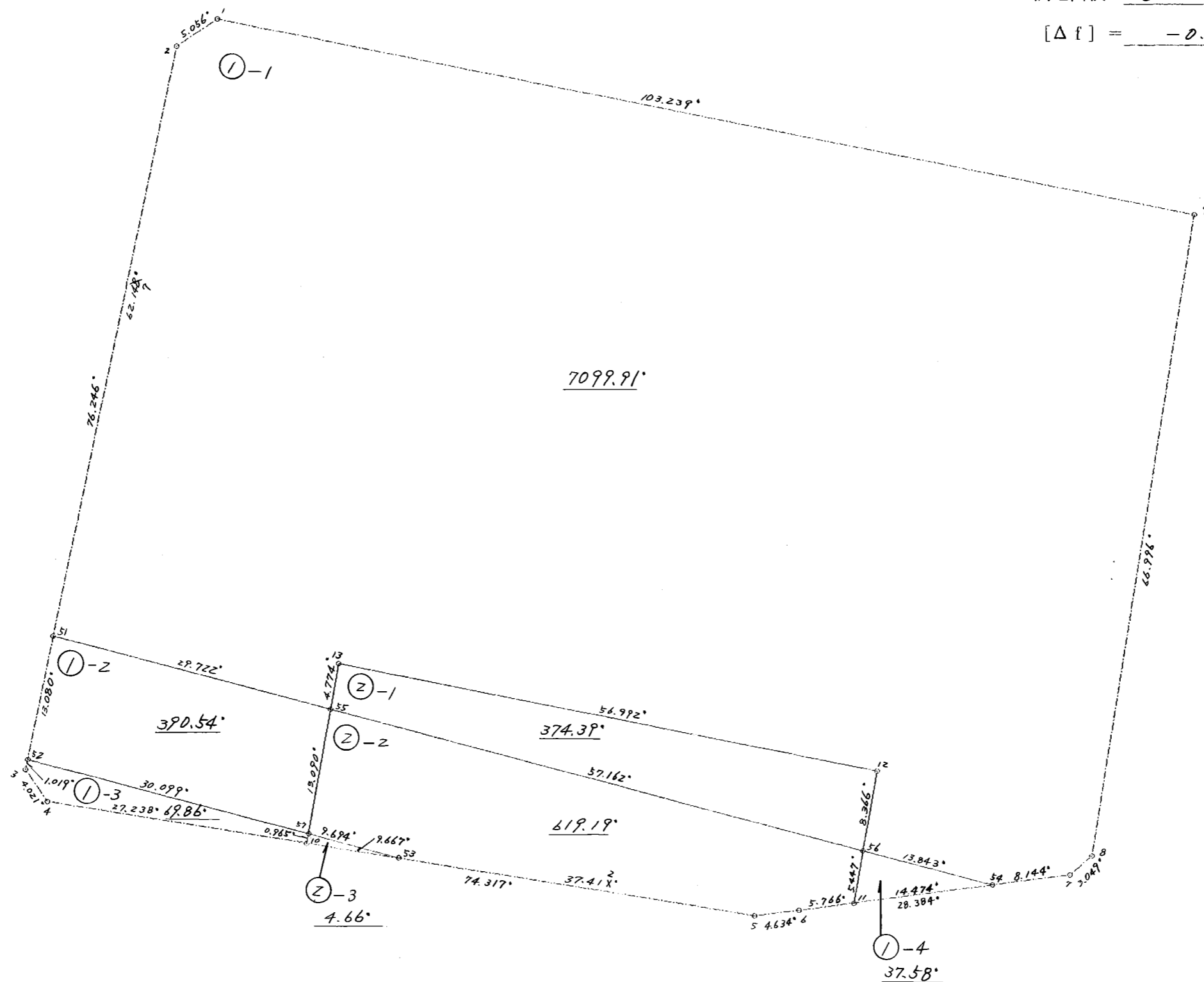
画地原子一覽表

街区番号 (16BL)

街区面積 = 8596.15'

換地面積 = 8596.13'

[Δf] = -0.02'



倍 橫 距 面 積 計 算

1

視 点	測 点	方 向 角	距 離	DX	DY	X	Y	倍橫距	倍 面 積
BL- 16- 1	BL- 16- 2	236 41 2	5.056	-2.777	-4.225	32706.801	-42434.611	-105.467	292.881859
BL- 16- 2	BL- 16- 3	192 2 47	76.246	-74.567	-15.913	32632.234	-42450.524	-125.605	9365.988035
BL- 16- 3	BL- 16- 4	146 7 56	4.021	-3.339	2.241	32628.895	-42448.283	-139.277	465.045903
BL- 16- 4	BL- 16-10	99 7 17	27.238	-4.318	26.894	32624.577	-42421.389	-110.142	475.593156
BL- 16-10	BL- 16-13	10 23 27	18.829	18.520	3.396	32643.097	-42417.993	-79.852	-1478.859040
BL- 16-13	BL- 16-12	101 15 16	56.992	-11.123	55.896	32631.974	-42362.097	-20.560	228.688880
BL- 16-12	BL- 16-11	190 22 22	13.813	-13.587	-2.487	32618.387	-42364.584	32.849	-446.319363
BL- 16-11	BL- 16- 7	82 49 21	22.618	2.826	22.441	32621.213	-42342.143	52.803	149.221278
BL- 16- 7	BL- 16- 8	48 21 48	3.049	2.026	2.279	32623.239	-42339.864	77.523	157.061598
BL- 16- 8	BL- 16- 9	9 12 27	66.996	66.133	10.720	32689.372	-42329.144	90.522	5986.491426
BL- 16- 9	BL- 16- 1	281 17 13	103.239	20.206	-101.242	32709.578	-42430.386	0.000	0.000000
								合 計	15195.793732
								1/2	7597.8968660
								面 積	7597.89 M*M

倍 橫 距 面 積 計 算 (保)

2

視 点	測 点	方 向 角	距 離	DX	DY	X	Y	倍橫距	倍 面 積
BL- 16-13	BL- 16-10	190 23 27	18.829	-18.520	-3.396	32624.577	-42421.389	-59.292	1098.087840
BL- 16-10	BL- 16- 5	99 7 16	47.078	-7.463	46.483	32617.114	-42374.906	-16.205	120.937915
BL- 16- 5	BL- 16- 6	83 8 47	4.634	0.553	4.601	32617.667	-42370.305	34.879	19.288087
BL- 16- 6	BL- 16-11	82 49 37	5.766	0.720	5.721	32618.387	-42364.584	45.201	32.544720
BL- 16-11	BL- 16-12	10 22 22	13.813	13.587	2.487	32631.974	-42362.097	53.409	725.668083
BL- 16-12	BL- 16-13	281 15 16	56.992	11.123	-55.896	32643.097	-42417.993	0.000	0.000000
								合 計	1996.526645
								1/2	998.2633225
								面 積	998.26 M*M