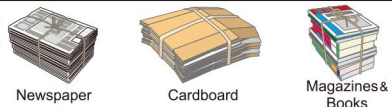


Newspaper, cardboard, magazines, books & miscellaneous paper

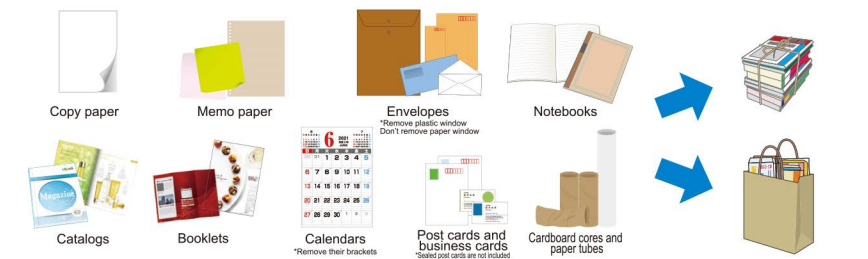
Dispose of garbage during group collections ("shudan kaishu") or at a resource warehouse at your nearest Community ("Gyosei") Center or Lifelong Learning Center for collection. (excluding Ojima Community Center)

[How to trash newspaper, cardboard, magazines and books]
Tie them together and recycle.



[Miscellaneous Paper]

*Containers, wrapping, and similar products with the paper mark (紙) Put miscellaneous paper in a paper bag or tie them together when disposing.



Disposing Cooking Oil

•Collection Points: Community ("Gyosei") Centers, Lifelong Learning Centers (excluding Ojima Community Center)



①Cool the oil ②Pour it into the container ③Close the cap

•Disposal Method: put oil from food in PET bottles or oil containers and dispose of at a collection box for used food oils.

[Attention]

- Limited to vegetable oil from your house.
- Please completely fill the container before disposing.
- Dispose of unused oil in the original container.
- Please try and refrain from throwing away foreign substances (bits of fried food, etc.) in containers.

Trash not accepted by the City

- Ask dealers and specified companies for disposal.
- Do not take to the garbage station.
- Please contact the city office for disposal methods.

Main garbage

Fireproof safes, pianos, tires, wheels, batteries, agricultural materials, automobiles (including parts), motorcycles, pesticides, medical equipment (including needles), bowling balls, soil, sand, ashes, concrete, stones, blocks, paint, fuel, oil, heating oil, machine oil, propane gas cylinders, explosives, dehumidifying equipment (refrigerant type), gypsum board, construction waste (contractor's work or DIY)



List of items that are not allowed to take and their disposal methods (From the website of Regional Cleaning Union of Ota City & Three Towns)



Fire extinguisher

Fire extinguishers are recycled by the manufacturer's organization. Please visit the website for details.

* Hours: 9:00 a.m. to noon and 1:00 p.m. to 5:00 p.m., except Saturdays, Sundays, and holidays.



Gunma Prefecture Recycling Office
(From the website of Fire Extinguisher Promotion Center)
TEL: 03-5829-6773 HP: <https://www.ferpc.jp/accept/>



Fire extinguishers

Recyclable Small, Used House Appliances

•Collection Points: Ota City Hall, Ojima and Nitta Government Building, Community ("Gyosei") Centers, Lifelong Learning Centers



- Small house appliances cannot be returned after being placed in the collection box.
- Remove batteries (incl. re-chargeable batteries) before placing into the collection box. (Leave them attached if they are not removable.)
- Erase all personal data before placing into the collection box.
- Items that were taken apart cannot be collected.
- Limited to only items from your house.

*Dispose them in the collection boxes located on the 1F.
•Objects that can be collected: Any house appliances that can fit in the collection box (15cm length X 30cm width)

Ink cartridges

•Collection Points: Ota City Hall, Ojima and Nitta Government Building, and Community ("Gyosei") Centers, Lifelong Learning Centers



- Put them into the designated collection box installed at each center.
- Objects that can be collected: Ink cartridges from all manufacturers (Recycled cartridges are also OK.)

[Note] Do not put toners into the box!

*Toner cartridges used in laser-based MFPs and printers Please put them into the collection box at the dealers or ask the specialized companies for collecting them.

Information for Direct Carry-In

[Operating hours]
• Mon.-Fri. 8:30-12:00, 13:00-16:45
• Sat. 8:30-12:00

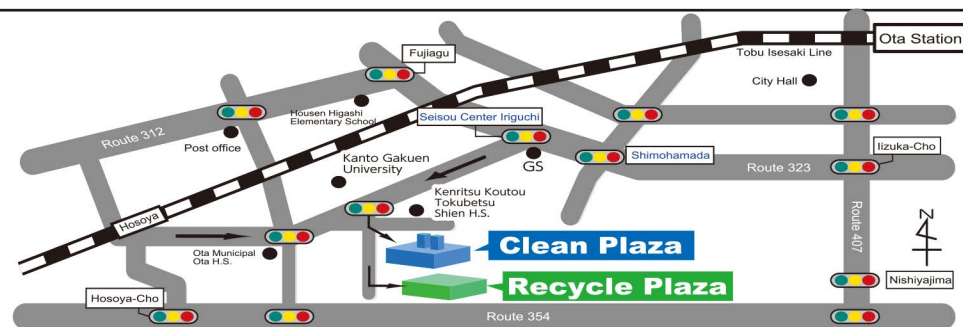
[Regular holiday]
Closed on Sundays, holidays, and December 31-January 3.

*Regarding operation hours for the year-end period (Dec. 29 and 30), please check the Ota City newsletter "Koho Ota" or other sources.

Direct carry-in costs: ¥130 per 10kg for household trash and ¥200 per 10kg for business related trash.

*Payments only accepted in cash

- Please come with plenty of time before closing.
- Oversized Trash up to 2.5m long is accepted.
- Depending on the type of item, there is a limit to the amount that can be taken in (e.g. Tatami mat Futon, etc.).
- Make sure various types of trash are separated accordingly before bringing them into the facilities.
- When bringing in pruned branches, cut them to a size no larger than 60cm long and 10cm in diameter (Do not trash roots)



Direct carry-ins

Burnable Trash → Clean Plaza

Non-Burnable, Oversized, Recyclable and Hazardous Trash → Recycle Plaza

Regional Cleaning Union of Ota City and Three Towns ("Ota-Shi Soto Sancho Koiki Seiso Kumiai")
604-1 Hosoyacho, Ota City TEL.0276(33)7980



Contacts

Regarding Trash Stations, Oversized Trash Door-to-Door Collection, Small Dead Animal (dogs, cats, etc.) Collection, Recycle Collection's Reward, Subsidies (incl. Food Waste Disposers), Guide for Separating and Disposing Trash, General Waste Disposal Licenses

Ota City Sanitation Division

604-1 Hosoyacho, Ota City TEL.0276(31)8153



Industrial waste

- Do not take to the garbage station.

General waste from business activities (except industrial waste)

Garbage of stores, businesses, restaurants, agriculture, etc. cannot be put at local garbage stations.

- Bring general waste from business activities directly to the Clean Plaza or the Recycle Plaza. *The handling fee of general waste from business activities is 200 yen per 10kg.
- When you can't bring the waste in person, ask for general waste collection and transportation licensed operators. *Please visit the website of Ota City.
- There are some general wastes that can't be handled by the city. Please inquire the following contact.(Regional Cleaning Union of Ota City & Three Towns)

Industrial waste (waste produced by business activities)

Since the waste can't be handled by the city, it is unacceptable to the Clean Plaza and Recycle Plaza. Please ask the specified company for disposal of it.

- [Waste plastic] Synthetic resin waste, synthetic fiber waste, synthetic rubber waste, tires, PVC pipes, vinyl sheets, Styrofoam, plastic containers, agricultural vinyl, etc.
- [Waste metal] Steel desks, steel lockers, tin, aluminum sash frames, steel frames, etc.
- [Glass, concrete, and ceramic scraps] Cups, fluorescent lamps, tea kettles, concrete blocks, window glass, tiles, roof tiles, etc.
- [Others] Cinders, sludge, waste oil, waste acid, waste alkali, rubber waste, mineral scraps, debris, soot and dust, animal solid waste, concrete solids from sludge, etc.

Garbage when mixed, valuable when separated! Please make sure to sort out your trash properly!