

## Large amount of trash

Pruning branches, etc.



## Items that cannot be disposed of as recyclable trash

Uncleaned items  
Containers that have not been emptied



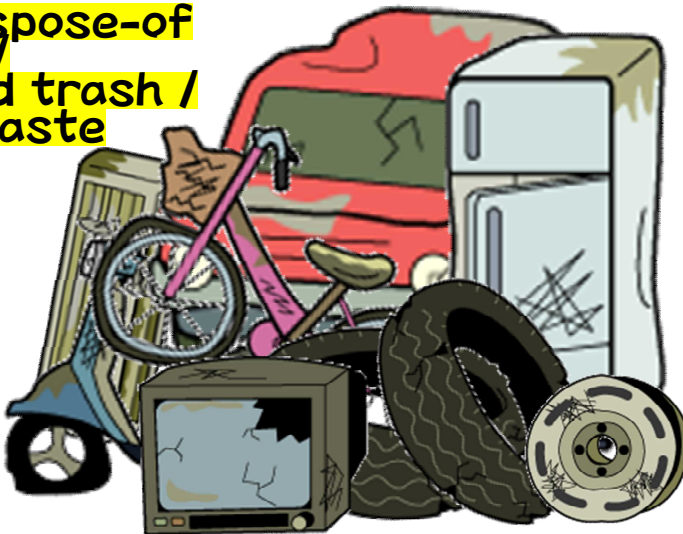
- Please empty bottles and cans and dispose of them as non-burnable trash.
- Empty the contents of plastic bottles and other plastics and dispose of them as burnable trash.

## Unseparated mixed trash



# Trash that does not follow the trash disposal rules cannot be collected.

Difficult-to-dispose-of waste /  
Illegally dumped trash /  
Business waste



Trash put out in areas other than the designated areas



Trash put out after collection time

Trash put out on days other than collection days