

How to Properly Separate and Dispose of Household Trash – FY2025 Edition



separating and trashing

Recyclable Trash

Rinse inside well to remove any waste, and place trash in their respective specified baskets/nets according to the symbol marked on each item.

***Do not dispose of any items that are dirty or have residual matter as recyclable trash. Please check the rules for separation and disposal of recyclables.**

PET Bottles

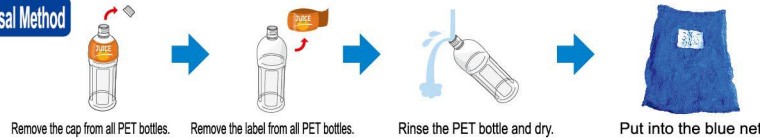


*Clear pet bottles for food

*Also collected at community centers and lifelong learning centers (except the Ojima Community Center).

- Items without the PET symbol, colored items, or dirty items should be emptied and disposed of as **"Burnable trash."**
- Dispose of caps and labels as **"Containers and Wrapping."**
- Please crush and make them as small as possible.

Disposal Method



Containers and Wrapping (Other Plastics)



*Also collected at community centers and lifelong learning centers (except the Ojima Community Center).

- Items with the plastic symbol on the container, exterior, or packaging. [Examples] Food containers, colored trays, bento containers, egg and tofu cartons, plastic shopping bags, shampoo and detergent bottles, plastic bottle caps and labels, medicine containers, cushioning material (polystyrene), etc.
- *Large polystyrene boxes (with the plastic symbol) should be placed in the green net at the recycling point of a community center or lifelong learning center.

- Plastic items must have no side longer than 30cm and must be made entirely of plastic.

*Do not cut or separate.

[Examples] Plastic straws, forks, spoons, etc.

Caution

Place these items directly into the green net without putting them into a plastic bag, etc.
* dirty items should be disposed of as **"Burnable trash."**

Disposal Method



Cans



*Food Cans Round, cylindrical cans (*Cans up to 20×15cm)

Disposal Method



Glass Bottles & Jars

*Food and Cosmetic and Medicine bottles

When disposing, remove the cap and separate into the colors shown below:

- Caps, broken bottles, dirty bottles, and containers purchased for homemade bottling should be emptied and put into **"Non-Burnable trash."**

Disposal Method

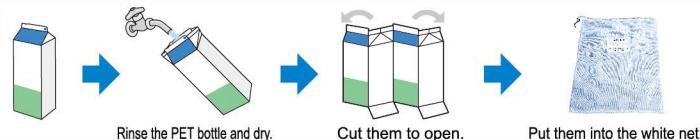


Milk Cartons



*Paper cartons with a white inside.

Disposal Method

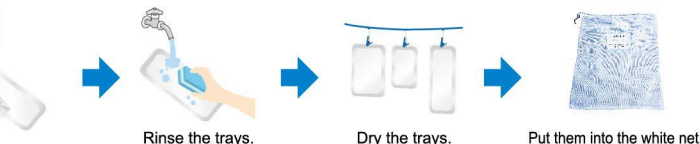


White Styrofoam Trays



*All white Styrofoam trays for food (The trays which get stuck with a toothpick)

Disposal Method



Hazardous Trash

Disposal Method

Don't open a hole in spray cans and butane gas cartridges for danger.
Dispose of items in designated baskets!



Spray Cans / Lighters / Portable Gas Burner Fuel Cans

Use up gas in spray cans and butane gas cartridges for prevention of danger in garbage collection and fire of the facility.

*Please consult Cleaning Business="Seiso Jigyo-Ka" about difficulty in using up the gas.

Fluorescent tubes, light bulbs, LED lights, mercury thermometers, mercury blood pressure meters

For safety, remove fluorescent tubes and lightbulbs from the device and place in its original box or wrap in paper before disposing. Place broken items in plastic bags, etc.

*Integrated LED lights that cannot be removed (such as lighting fixtures) should be disposed of as **Non-Burnable trash.**

Batteries (incl. re-chargeable and button)

- As a general rule, rechargeable batteries (in home appliances) should be removed from the device before disposing.
- Batteries may also be disposed of at a recycling box at a store.
- Batteries from automobiles and motorcycles cannot be disposed of.



Do not put into the "Non-Burnable Trash" bag!!



Dispose of them as "Hazardous Trash."

Examples of hazardous trashes with Non-removable rechargeable batteries



*Batteries can be disposed at a small home appliance recycling collection box.

Follow the rules for using a garbage station and cooperate actively with the district officers and duty persons.

Garbage trucks may not always come at the same time due to weather/road conditions and the amount of trash. Please put out your garbage on the designated date and location by 8:30 a.m. *Do not put out trash the day prior to collection days

Burnable Trash

Caution

- Use designated trash bags. Trash placed in supermarket/other/other bags will not be picked up.
- Never put in glass shards or metal scraps.
- Please empty the containers before disposal.
- Get rid of as much water as possible from your food waste.
- For beanbags, ask for door-to-door collection or take them directly to the center.

Disposable Items

- Kitchen garbage (drain water from garbage well)
- Leather and rubber products
- Old fabric products, disposable diapers (remove human waste first)
- Plastic products (e.g. buckets, planters, hangers, etc.)
- Polystyrene without the plastic mark
- Wood waste including branches (remove roots), weeds (remove soil), and bamboo
- *Poisonous trees (such as oleander) and trachycarpus palm trees cannot be processed as trash.

Disposal Method

- Make sure to tie up the opening of the bag so that its contents do not come out.
- When disposing of pruned branches, cut them to a size no larger than 60cm long and 10cm in diameter and put them into a designated trash bag, or tie them into a bundle up to 50cm in diameter and place them in a 45L bag.
- The amount of garbage that each household can put out at one time is approximately two 45-liter bags.

Specified Trash Bags



Prices of Specified Trash Bags

Size	Quantity	Price
L 45ℓ	10 bags	¥200
M 30ℓ	14 bags	¥150
S 20ℓ	20 bags	¥150

Non-Burnable Trash

Caution

- Use designated trash bags. Trash placed in supermarket/other/bags will not be picked up.
- Dispose of spray cans, lighters, portable gas burner fuel cans, batteries (including re-chargeable batteries), electronic cigarettes, electric razors, etc. as hazardous trash.
- If you cannot remove the re-chargeable batteries, take them directly to the facility (direct carry-in) or dispose of them into a Small Home Appliance Recycling collection box. (It can lead to facilities and garbage trucks catching on fire.)
- Items with rechargeable batteries that cannot be removed should be taken directly to a trash treatment operator or put in the small appliance collection box.

The listed hazardous trash items may cause fires in a trash treatment facility or collection vehicles. Do not dispose of them as Non-Burnable trash. * Mobile batteries are also hazardous trash

Disposable Items

- Glass objects, porcelain, metal objects (pots, frying pans, etc.), razors
- Umbrellas only, even if they come out of the bag, will be collected.
- Broken glass and cans unsuitable for recycling
- Household appliances that fit into designated trash bags (e.g., rice cookers, electric pots, etc.) *Items subject to the Home Appliance Recycling Law, and PCs are not accepted (see reverse side) (Please make sure to take batteries (including re-chargeable ones) out when disposing.)
- Integrated LEDs that cannot be removed (such as lighting fixtures)
- If it does not fit into the designated bag, dispose of it as bulky trash

Disposal Method

- Wrap glass products and knives in paper, cloth, etc. before disposing.
- The amount of trash allowed to be disposed of at one time is up about two 30L trash bags.

Specified Trash Bags



Prices of Specified Trash Bags

Size	Quantity	Price
30ℓ	10 bags	¥400
15ℓ	10 bags	¥200

Oversized Trash

Caution

- Trash that is too large to fit into the city's specified trash bags is considered oversized trash.
- Please take dissolved garbage directly to the center.
- Beanbag chairs, and printers cannot be disposed of at garbage stations. Please have these items collected or take them directly to a trash treatment facility.

Disposable Items/Fees

- For disposal fees, please refer to the "Matters Concerning Oversized Trash."
- *Please contact the Cleaning and Disposal Service Division ("Seiso Jigyo-Ka") regarding items not listed.

Disposal Method

- Trash disposal station → Affix an "Oversized Trash Disposal Sticker" and put it out for collection.
- Door-to-door collection → Apply in advance to the Cleaning and Disposal Service Division "Seiso Jigyo-Ka", (TEL: 0276-31-8153) (reservations necessary)
- Direct carry-in → Carry directly into Recycle Plaza (see reverse side). [Direct carry-in costs: ¥130 per 10kg for household trash. Oversized Trash Disposal Stickers are not required.]

Oversized Trash Disposal Sticker



*Oversized Trash Disposal Stickers are sold at stores that sell Ota City specified trash bags. Please check at store registers or information centers.
*Cannot be returned or exchanged.



Regional Cleaning Union of Ota City & Three Towns Garbage Separation App

[Main functions]

- Garbage Separation Dictionary: Instructions for separating garbage and notes
- How to trash garbage: How to trash various types of garbage
- Calendar: Collection days for various types of garbage
- Alert setting: Notification of collection days
- Notice from Ota City and FAQ (Q&A format)

You can view the "Instructions for separating and trashing household garbage" and the "Collection calendar" in five foreign languages.

Garbage Separation App

Download here! ▶



ios端末用



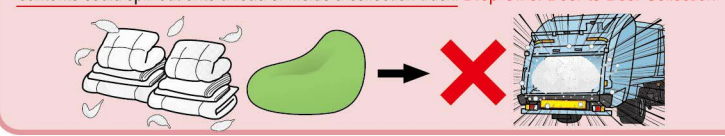
Android端末用

Notes and Requests Regarding Garbage Collection Stations

We ask the users (supervisor) to take responsibility for overseeing and maintaining their trash collection stations. Please follow the rules for disposing of garbage to help keep your community clean.



Beanbag chairs and feather duvets cannot be put out at garbage collection stations because their contents could spill out onto a road or inside a collection truck. Drop-Off or Door-to-Door Collection



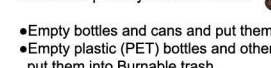
Bulky garbage

*Pruned branches, etc.



Items that cannot be disposed of as recyclable trash

Unclean or partially filled containers

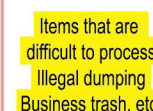


Empty bottles and cans and put them into Non-Burnable trash

Empty plastic (PET) bottles and other plastics and put them into Burnable trash

Garbage that violates the garbage disposal rules will not be collected.

Items that are difficult to process
Illegal dumping
Business trash, etc.



Garbage not put out in the designated area

Garbage put out late

Garbage put out on days other than the collection day