

Ota Informa

July 10th, 2025 Edition

Edited and issued by
Ota International Association



More
Info. in
English



太田インフォルマ 2025年7月10日号 (英語版)

P1. おおたの夏まつり・7月と8月の市役所開庁案内

P2. 無料 カリビアンビーチの利用券を配布しています・無料 尾島親子ふれあいプールオープンします・熱中症から身を守ろう!・7月11~20日 夏の県民交通安全運動・7~8月の無料法律相談

P3. 休日当番医・急患のみ診察可能な救急指定病院・平日夜間急病診療所・休日歯科診療・市税の7月納税・行政情報多言語閲覧サービス「カタログポケット」・証明書の取得はコンビニで!!

P4. 英語の外国人市民相談窓口ワンストップセンター開設日・ハローワークおおた外国人出張行政相談コーナー・ごみの出し方の外国語版パンフレットもあります&無料「ごみの分別アプリ」&動画「まぜればごみ わければ資源」・太田市の公共施設は全面禁煙です。ごみのポイ捨てはご遠慮ください。

*折り込みチラシ:

✓ 太田警察署からのお知らせ「各種相談窓口のご案内」
「あなたのまちの交番&駐在所」

Summer Festivals in Ota City

Ota Natsu Matsuri

Date: **July 20th (Sun.)**

<North Festival Grounds> Time: 14:00 - 21:30

Location: along Ota Chiku Shoutengai Douri

Info.: Ota Community Gyousei Center ☎0276-22-2603

<South Festival Grounds> Time: 15:00 - 21:30

Location: along Minami Ichiban Gai Odori

Info.: Kuai Community Gyousei Center ☎0276-45-6978



Serada Gion Matsuri

Dates: **July 26th (Sat.)**

Time: 17:00 - 21:00

Location: Serada Park, around Yasaka Shrine (in Serada-Cho)

Info.: Serada Gion Matsuri Jikkou linkai

(In the Serada Shougai Gakushu Center) ☎0276-52-1002



Nitta Matsuri / Fire Festival

Date: **August 9th (Sat.)**

Time: 17:00 -

Location: around Nitta Baseball Ground (Southside of Nitta Government Building)

Info.: Nitta Matsuri Jikkou linkai Headquarter

(In the Watauchi Community Gyousei Center) ☎0276-57-1041

Yabuzuka Matsuri

Date: **September 6th (Sat.)**

Time: 14:45 - 20:00

Location: Yabuzukahonmachi Central Sports Park, Chuou Undou Kouen

Info.: Yabuzukahonmachi Community Gyousei Center ☎0277-47-7604



Closed days in July and August 2025 at Ota City Hall.

Ota City Hall will be closed on **Saturdays, Sundays**, as well as
July 21st (Monday) and August 11th (Monday).

<FREE> Tickets to Caribbean Beach Pool!

Come and check out the indoor pools at Caribbean Beach (Kiryu-Shi Niisatocho 461).

Distribution Locations: Gymnasiums *Taikukan* in Ota City, *Watarase Sports Hiroba*, Ota City Hall - Information 1F, and at various Community *Gyousei* Centers

How to apply: An application must be filled out for each family. (No more than one day at a time.)

Eligible age groups: Children 3-years-old to junior high school students (must live in Ota City).

Note: Children 2 years of age or under, or are still wearing diapers are not allowed.

Contact Information: Sports Facility Management Division, *Sports Shisetsu Kanri-Ka* ☎0276-45-8118



<FREE> Let's Go to the Pool! Ojima Oyako Fureai Pool

Period: till September 7th (Sunday), 2025

Hours: 9:00 ~ 12:00 and 13:00 ~ 16:30

Location: Ota-Shi Kameoka-Cho 102

Regulations: Pool use permitted only for 3rd graders and younger (must be accompanied by a guardian).

Parking: 2nd Parking at the Ojima *Shougai Gakushu* Center, Ojima Kouen
Please contact the pool (☎0276-52-2966; only during the period) directly for information. Closed due to rain / low temperatures.

Sports Facility Management Division Sports Shisetsu Kanri-Ka ☎ 0276-57-2222



Prevent Heat Stroke / Heat Exhaustion

July is the month to strengthen prevention of heat stroke. Every year, July and August see a large number of emergency medical evacuations due to heat stroke. Please talk to the elderly and others around you. Follow the 5 safety tips and protect yourself!

- **Avoid heat.**
- **Drink water** frequently.
- **Eat well and take care of your health** on a daily basis.
- **Use Air Conditioning** effectively.
- **Take moderate breaks** without overexertion.



Contact: Fire Department *Shoubou Honbu*, Emergency Services Division, *Kyukyu-Ka* ☎0276-33-0306

Summer Traffic Safety Campaign from July 11th to 20th, 2025 in Gunma

Keep Your Eyes on the Road. Not on the Screen!

Ensure the Safety When Walking.

Wear reflective materials and bright colored clothing when going out after dusk.

Stop Distracted Driving. Do Not Drink and Drive!

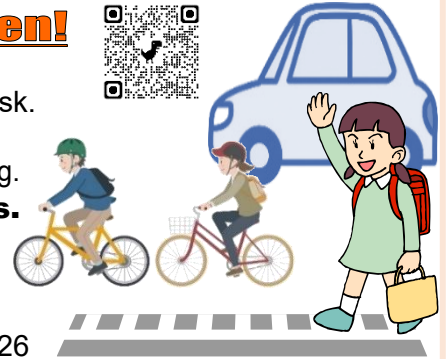
Never use a phone or other means, or under the influence of alcohol while driving.

Follow Traffic Rules to Avoid Bicycle, E-scooter, etc. Accidents.

Make sure to wear a helmet and purchase insurance to be prepared in case of an accident.


Contact: Ota City Hall (5F / Counter 55),

Traffic and Transportation Measures Division *Koutsu Taisaku-Ka* ☎ 0276-47-1826



FREE LEGAL ADVICE

(Only in Japanese. Dates and venues are subject to change.)

Location	Date	Hours	Consultation	Information / Appointment	Note
Ota City Hall (3F / Counter 38)	July 16 (Wed.)	9:30-12:00	20 mins / person	Ota City Hall (3F / Counter 38), Residents' Consultation Division, <i>Shimin Soudan-ka</i> ☎ 0276- 47-1897	Service at all locations require an appointment beforehand; you can make an appointment up to 2 weeks in advance.
	July 19 (Sat.)				
	July 30 (Wed.)				
	Aug. 7 (Thu.)	13:30-16:00			
	July 24 (Thu.)				
	Aug. 7 (Thu.)				
<i>Fukushi Kaikan</i> (Ota-Shi Iida-Cho 1549)	Aug. 14 (Mon.)	13:00-16:00		Ota City Social Welfare Conference, <i>Shakai Fukushi Kyougikai</i> ☎0276-46-6208	



Doctors on Duty on Sundays and Holidays (Emergency)

If you have a fever or respiratory symptoms, please call from car, etc. before visiting clinics. (I.M.: Internal Medicine)

July 20 (Sun.)	Pediatrics	Motegi Kodomo Clinic (<i>Wakiya-Cho</i>)	0276-55-2800
	I.M.	Yamagishi Naika lin (<i>Iizuka-Cho</i>)	0276-45-1580
	Obstetrics-gynecology	Ito Sanfujinka (<i>Iida-Cho</i>)	0276-45-2330
July 21 (Mon.)	I.M. / Pediatrics	Horikoshi lin (<i>Toriyama Shimo-Cho</i>)	0276-22-2660
	Urology / I.M. / Dermatology	Tsuchiya Clinic (<i>Hosoya-Cho</i>)	0276-33-7250
	Orthopedics	Shimura Seikeigeka (<i>Nitta One-Cho</i>)	0276-57-8835
July 27 (Sun.)	I.M. / Pediatrics	Takizawa lin (<i>Nitta Akabori-Cho</i>)	0276-55-1010
	I.M.	Shimohamada Clinic (<i>Shimohamada-Cho</i>)	0276-47-7330
	Orthopedics	Ishida Seikeigeka lin (<i>Yura-Cho</i>)	0276-32-6566
Aug. 3 (Sun.)	I.M. / Pediatrics	Ota Higashi Kodomo & Otona Shinryoujo (<i>Ryumai-Cho</i>)	0276-48-5611
	I.M.	Watauchi Shinryoujo (<i>Nitta Kamidanaka-Cho</i>)	0276-56-3366
	Dermatology / Plastic Surgery / Pediatrics	Noguchi Hifuka lin (<i>Iizuka-Cho</i>)	0276-60-1211
Aug. 10 (Sun.)	I.M. / Neurosurgery / Pediatrics	Minowa Clinic (<i>Yura-Cho</i>)	0276-40-4888
	I.M.	Yokomuro lin (<i>Ojima-Cho</i>)	0276-52-0502
	Ophthalmology	Honmachi Shinryoujo (<i>Obara-Cho</i>)	0277-78-2254

Note: The doctors above are only on duty for seeing emergency patients, so other patients are asked to seek treatment on weekdays.

Designated Emergency Hospitals providing Medical Services (Only to emergency patients)

Call the Hospital Guidance Telephone Service (☎0276-45-7799) to confirm available medical services before your visit.

Ota Kinen Byouin ☎0276-55-2200

IMS Ota Chuou Sougou Byouin ☎0276-37-2378

Motojima Sougou Byouin ☎0276-22-7131

Shiroyama Byouin ☎0276-46-0311

Horie Byouin ☎0276-38-1215

Kouaikai Dai Ichi Byouin ☎0277-78-1555

Weeknight Emergency Infirmary (I.M. or Pediatrics)

Location: Ota-Shi Health Hoken Center 1F

Address: Iida-Cho 818 ☎0276-60-3099

Reception Hours: Mon. to Sat. 18:45 - 21:45* (excl. public holidays) *The reception hours may change.

Note: Treatments for mild illnesses are available. Please call before visit to check which specialist is on duty.

Dental Services on Sundays, Holidays, and Year-End/New Year Holidays (10:00 - 13:00)

Ota Nitta Shika Ishi Kaikan (Note: southwest of Ota City Hall; 2-3 min away walking distance.) ☎0276-45-7320

Upcoming FY2025 Payment Deadlines for Municipal Taxes

Fix Property (2nd period) and National Health Insurance (1st period) Tax is due on

July 31st (Thursday), 2025.

Please be sure to make payments by the deadline. For tax payment inquiries, contact the Tax Collection Division *Shunou-Ka* in Ota City Hall (2F/Counter 23) ☎ 0276-47-1820.

Multilingual Browsing Service

‘Catalog Pocket’

Read City's News Letters ‘Kouhou Ota’ in 10 languages. *

*Languages: Japanese, Portuguese, English, Spanish, Korean, Vietnamese, Thai, Indonesian, Chinese (simplified and traditional)



Use My Number Card for Certificates at Convenience Stores.

If you have *My Number Card*, you can obtain certificates from an interactive kiosk at convenience stores within the country. For more information, please see the 2D code on the right.

Operation Hours: **6:30 – 23:00**

Type of Certificates:

- Certified Copy of Resident Record *Juminhyou no Utsushi*
- Inkan-stamp Registration Certificate *Inkan Touroku Shoumeisho*
- Income and Taxation Certificate *Shotoku Kazei Shoumeisho*
- Certified Copy of Family Register *Koseki Touhon*
- Certified Copy of Extract of Family Register *Koseki Shouhon*
- Certified Copy of Supplementary Schedule to Family Register *Koseki Fuhyou no Utsushi*



Assistance in English

Consultation Counter for Foreign Residents in City Hall

Monday - 9:00 to 11:30 / Thursday - 13:00 to 16:00

Video Interpreting Service in **18** languages is also available at the counter using a tablet device during our consultation hours (**weekdays 9:00-11:30/13:00-16:00 except for Wednesdays and Friday afternoons**) for procedures, consultations or other matters at the city hall. For interpretation, please come to the counters during the operation hours.

Languages: English, Filipino, Hindi, Nepali, Indonesian, Vietnamese, Korean, Myanmar, Thai, French, Russian, Khmer, Malaysian, Ukrainian, Portuguese, Spanish, Chinese and Bengali (For Bengali interpretation service, please consult with us in advance.)

Location: Ota City Hall (1F / Next to **Yamazaki Shop**),

Consultation Counter for Foreign Residents *Gaikokujin Shimin Soudan Madoguchi One Stop Center*

Notification of Birth, Child-Rearing Allowance and Public Assistance consultations can take time, so please come by early and please note that it is closed on public holidays (incl. Year-End and New Year holidays).

Contact: Ota City Hall ☎0276-47-1111 (general) or Ota International Association ☎0276-48-1001 (Weekdays only; 8:30-12:00 / 13:00-17:00)



Hello Work OTA in Ota City Hall

Governmental Consultation Branch for Foreign Residents

Tuesday 13:00-16:00

(Excl. public holiday, year-end and new year holidays)

Location: Ota City Hall (1F), Consultation Counter for Foreign Residents

Contact: Hello Work OTA ☎0276-46-8609 (43#)



FY 2025 Trash Management Brochure

An updated, translated versions of the **Collection of Household Trash Calendar**, **How to Separate and Dispose of Household Trash Properly** and **Matters Concerning Oversized Trash** are available at the Cleaning and Disposal Service Division, the Residents' Affairs Division *Shimin-Ka*, the Consultation Counter for Foreign Residents *Gaikokujin Shimin Soudan Madoguchi One Stop Center* and on the city website.

Languages: English, Portuguese, Spanish, Chinese and Vietnamese



Trash
Collection



How to
Separate and
Dispose



Oversized
Trash



Android

FREE Garbage App

The app is to help you to sort out your trash and set a reminder in English, Portuguese, Spanish, Chinese, and Vietnamese such as

- **HOW** to separate waste and recycle
- **WHERE** and **WHEN** to put them out.

Check out the video **'Garbage when mixed. Valuable when separated!'**



iPhone



No Smoking! No Littering! in City Properties.

Smoking, vaping and littering* are strictly prohibited in **ALL** public spaces within city facilities. *Including cigarette butts.



For more information, please contact at the **OTA CITY HALL, International Affairs Division (Kokusai-Ka)** and the **OTA INTERNATIONAL ASSOCIATION (Ota-Shi Kokusai Kouryu Kyokai)**.

Address: 〒373-8718 Ota-Shi Hama-Cho 2-35

Tel: 0276-47-1908 & 0276-48-1001

Fax: 0276-48-1012. **Email:** otaia@mx.city.ota.gunma.jp

Website: <http://www.city.ota.gunma.jp/005gyosei/0020-007kikaku-kouryu/kokusaikouryu-eng/index.html>

太田市役所国際課・太田市国際交流協会（英語版行政情報）

Ota Informa in Simple Japanese

やさしい日本語

