

**Edited and issued by
Ota International
Association**



**More
Info. in
English**



✓太田警察署からのお知らせ「1月10日は110番の日です」・「あなたのまちの交番&駐在所」

Sunday, February 1st, 2026

Time: Opens at 13:00 (Starts at 13:30)

Location: *Shichoukaku* Hall,

Ota-Shi Gakushu Bunka Center

(Address: Ota-Shi Iizuka-Cho 1549-2)

Admission Fee: Free

Speech Theme:

Come cheer us on!

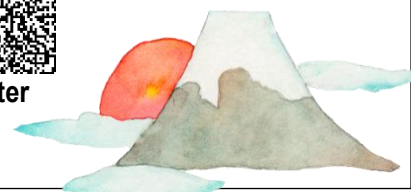
How you felt coming to Japan and things that you would like to share. (Max: 5 mins)

Organized by OTA CHUO Lions Club and Ota International Association
Supported by Ota International Liaison Council



Contact: Ota International Association at Ota Intercultural Communication Center
Tabunka Kyousei Center Ota (Address: 〒373-0817 Ota-Shi Iizuka-Cho 69-3)

TEL : 0276-48-1001 / FAX : 0276-48-1012 / E-mail:otaia@mx.city.ota.gunma.jp



FREE SOS in Ota Legal Consultation for Foreign Residents
<Sunday, January 25th, 2026>



See the details on the 2D code.



Period Extended for OTACO Cards Pickup Counter
< Available until January 30th, 2026.>



Period & Hours: 9:00-17:00 until January 30th (Fri.) excluding weekends and public holidays

Location: East side of Residents Affairs Division (Ota City Hall 1F / Counter 11)

Who Can Collect: Head of Household, a member of the household who are eligible and distributed, or their representative.

(Cards are distributed to those who were registered in the Basic Resident Registration of Ota City as of **August 1st, 2025**)

For more details including what to bring, please check the 2D code on the right. ➡➡➡➡➡

Contact: Ota City Economic Revitalization Project Call Center ☎0570-015-789

9:00 to 18:00 Opens weekdays except for public holidays until January 30th (Fri.), 2026.






Fiscal Year 2026 Daycare Application



2nd Call Application for Nurseries *Hoikuen* and Certified Children Centers* *Nintei Kodomoen* enrollment is starting in this month. (Note*: Centers originally nurseries.)

2nd Call Application 	Vacancy Announced	At 9:00 on January 16 (Fri.), 2026
	Online Application	From 9:00 on January 16 (Fri.) till 17:15 on February 3 (Tue.), 2026
	At-the-counter Application	From February 3 (Tue.) till 10 (Tue.), 2026 Note: Reservation required. Please book via the city's official LINE account. Booking accepted from 9:00 on January 28 (Wed.), 2026 until 14:00 on the day before the day of your visit.

For further information in English, please check the **September 10, 2025 edition of Ota Informa** (The code on the right).

More Info.



Contact: Ota City Hall (3F / Counter 31), Children's Affairs Division *Kodomo-Ka* ☎0276-47-1943

<City's Childcare Support>

Diaper & Baby Wipe Service Extended till 2 yrs old

The service allowing unlimited use of diapers and wipes delivered to nurseries *Hoikuen* in the city —initiated to enhance childcare environments by reducing burdens on parents and the workload of childcare workers managing diapers—has been expanded to cover children up to age two.

Target: Children aged 0 to 2 years old attending daycare centers and other childcare facilities within the city.

Note: No registration is required to use the service.

Contact: Ota City Hall (3F / Counter 31), Children's Affairs Division *Kodomo-Ka* ☎0276-47-1830



Scholarships Application is OPEN from January.

For Application, please fill out forms available at the city website or the General Educational Affairs Division in Ojima Government Office, *Ojima Chousha*; Ota-Shi Kasukawa-Cho 520, and submit them at the division with other required documents during the application period.

Note: Application by mail is NOT acceptable. The counter is closed on weekends and national holidays.



Name of Program (Type)	Eligible Students	Amount (per person)	Period
Ota Rotary Club Shougaku Shikin (Benefit)	High school	180,000 yen / year	Until Apr. 30 (Thu.), 2026
Sonic & Daiyu Kensetsu Shougaku Shikin (Partial Repayment Benefit)	Higher education <i>Daigaku & Daigakuin</i>	420,000 yen / year	Until Mar. 31 (Tue.), 2026

Contact: Ota City Board of Education, Educational General Affairs Division *Kyouiku Soumu-Ka* ☎0276-20-7080

Donate to the Food Bank Ota!

Food inventory levels drop significantly toward the end of the year. Please donate for those needed.

Community Centers	Post Offices (Ota, Ojima, Kizaki, Yabuzukahonmachi)	Food Bank Ota (At South Government Building of Ota City Hall)
9:00-16:30 Excl. weekends and pub. holidays	During operation hours	

Donatable Food:

- **Canned foods**, ● **Dried noodles**, ● **Pouched foods**

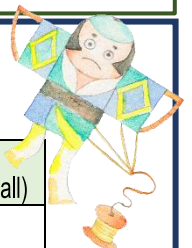
Must be expired later than 2 months, are unopened and has to be able to store at room temperature.

Note: No alcohol related product is accepted.

- **Brown rice**

Produced in **2024 or later** without any bad smells or pests.

Contact: Social Assistance Division *Shakai Shien-Ka* ☎0276-47-1957





Doctors on Duty on Sundays and Holidays (Emergency)

If you have a fever or respiratory symptoms, please call from car, etc. before visiting clinics. (I.M.: Internal Medicine)

Jan. 11 (Sun.)	I.M. / Pediatrics	Kojima Iin (Kumano-Cho)	0276-25-0378
	I.M.	Shoda Iin (Minamiyajima-Cho)	0276-38-5511
	I.M. / Surgery / Dermatology	Sakamoto Ichoka Iin (Obara-Cho)	0277-40-4111
	Ophthalmology	Josai Ganka (Niino-Cho)	0276-30-4177
Jan. 12 (Mon.)	I.M. / Pediatrics	Iyasaka Resort Clinic (Hon-Cho)	0276-56-9585
	I.M. / Diabetes Medicine	Ota Tounyobyo Clinic (Minamiyajima-Cho)	0276-55-6611
	Urology / I.M. / Dermatology	Tsuchiya Clinic (Hosoya-Cho)	0276-33-7250
	Ophthalmology	Harigaya Ganka (Higashihon-Cho)	0276-22-3642
Jan. 18 (Sun.)	I.M. / Pediatrics	Horikoshi Iin (Toriyama Shimo-Cho)	0276-22-2660
	I.M.	Toda Iin (Hachiman-Cho)	0276-25-5556
	Urology / I.M.	Ota Hinyoukika · Naika Clinic (Higashiyajima-Cho)	0276-38-8833
	Ophthalmology	Fujiu Ganka Iin (Hama-Cho)	0276-45-3358
Jan. 25 (Sun.)	I.M. / Pediatrics	Iizuka Iin (Nitta Kizaki-Cho)	0276-56-1040
	I.M.	Igarashi Iin (Obara-Cho)	0277-78-2405
	Otorhinolaryngology (E.N.T.)	Sato Jibiinkouka Iin (Iizuka-Cho)	0276-48-4526
	Orthopedics	Shimura Seikeigeka (Nitta One-Cho)	0276-57-8835
Feb. 1 (Sun.)	I.M. / Dermatology / Pediatrics	Araki Iin (Nitta Murata-Cho)	0276-57-2722
	I.M.	Kasuga Iin (Hon-Cho)	0276-22-2257
	I.M. / Dermatology / Urology	Kawada Clinic (Yura-Cho)	0276-33-7755
	Orthopedics	Ota Dai Ichi Seikeigeka Naika (Hama-Cho)	0276-47-0171
Feb. 8 (Sun.)	I.M. / Pediatrics	Nakano Iin (Narizuka-Cho)	0276-37-5800
	I.M. / Gastroenterology / Respiratory Medicine	Yamada Clinic (Kamikobayashi-Cho)	0276-40-2121
	Neurosurgery / Neurology / I.M.	Nakama Clinic (Nitta Koganai-Cho)	0276-57-8623
	Obstetrics-gynecology	Ito Sanfujinka (Iida-Cho)	0276-45-2330

Note: The doctors above are only on duty for seeing emergency patients, so other patients are asked to seek treatment on weekdays.

Designated Emergency Hospitals providing Medical Services (Only to emergency patients)

Call the Hospital Guidance Telephone Service (☎0276-45-7799) to confirm available medical services before your visit.

Ota Kinen Byouin ☎0276-55-2200

IMS Ota Chuou Sougou Byouin ☎0276-37-2378

Motojima Sougou Byouin ☎0276-22-7131

Shiroyama Byouin ☎0276-46-0311

Horie Byouin ☎0276-38-1215

Kouaikai Dai Ichi Byouin ☎0277-78-1555



Weeknight Emergency Infirmary (I.M. or Pediatrics)

Location: Ota-Shi Health Hoken Center 1F

Address: Iida-Cho 818 ☎0276-60-3099

Reception Hours: Mon. to Sat. 18:45 - 21:45* (excl. public holidays, year-end and new year holidays) *The reception hours may change.

Note: Treatments for mild illnesses are available. Please call before visit to check which specialist is on duty.

Dental Services on Sundays, Holidays, and Year-End/New Year Holidays (10:00 - 13:00)

Ota Nitta Shika Ishi Kaikan (Note: southwest of Ota City Hall; 2-3 min away walking distance.) ☎0276-45-7320

Upcoming Fiscal Year 2025 Payment Deadlines for Municipal Taxes

Municipal/Prefectural Inhabitant Tax (4th period) and National Health Insurance Tax (7th period) is due on

February 2nd, 2026 (Monday).

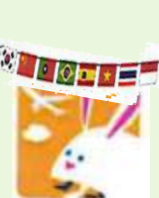
Please be sure to make payments by the deadline. For tax payment inquiries or consultations, contact the Tax Collection Division Shunou-Ka in Ota City Hall (2F / Counter 23) ☎ 0276-47-1820.



Multilingual Browsing Service 'Catalog Pocket'

Read City's News Letters 'Kouhou Ota' in 10 languages. *

*Languages: Japanese, Portuguese, English, Spanish, Korean, Vietnamese, Thai, Indonesian, Chinese (simplified and traditional)



Trash Management Brochure

Translated versions of the **Collection of Household Trash Calendar**, **How to Separate and Dispose of Household Trash Properly** and **Matters Concerning Oversized Trash** are available at the Cleaning and Disposal Service Division, the Residents' Affairs Division *Shimin-Ka*, the Consultation Counter for Foreign Residents *Gaikokujin Shimin Soudan Madoguchi One Stop Center* and on the city website.

Languages: English, Portuguese, Spanish, Chinese and Vietnamese



Trash
Collection



How to
Separate and
Dispose



Oversized
Trash



Android

FREE Garbage App

The app is to help you to sort out your trash and set a reminder in English, Portuguese, Spanish, Chinese, and Vietnamese such as

- **HOW** to separate waste and recycle
- **WHERE** and **WHEN** to put them out.



iPhone



Also check out the video **'Garbage when mixed. Valuable when separated!'**



No Smoking! No Littering! in City Properties.

Smoking, vaping and littering* are strictly prohibited in **ALL** public spaces within city facilities. *Including cigarette butts.



Hello Work OTA in Ota City Hall

Governmental Consultation Branch for Foreign Residents

Tuesday 13:00-16:00

(Excl. public holiday, year-end and new year holidays)

Location: Ota City Hall (1F), Consultation Counter for Foreign Residents

Contact: Hello Work OTA ☎0276-46-8609 (43#)



Assistance in English

Consultation Counter for Foreign Residents in City Hall

Monday - 9:00 to 11:30 / Thursday - 13:00 to 16:00

Video Interpreting Service in 18 languages is also available at the counter using a tablet device during our consultation hours (weekdays 9:00-11:30/13:00-16:00 except for Wednesdays and Friday afternoons) for procedures, consultations or other matters at the city hall.

Languages: English, Filipino, Hindi, Nepali, Indonesian, Vietnamese, Korean, Myanmar, Thai, French, Russian, Khmer, Malaysian, Ukrainian, Portuguese, Spanish, Chinese and Bengali (For Bengali interpretation service, please consult with us in advance.)



Location: Ota City Hall (1F / Next to *Yamazaki Shop*),

Consultation Counter for Foreign Residents *Gaikokujin Shimin Soudan Madoguchi One Stop Center*

Notification of Birth, Child-Rearing Allowance and Public Assistance consultations can take time, so please come by early.

Contact: International Affairs Division of the Ota City Hall, or Ota International Association

☎0276-47-1908 / 0276-48-1001 (Weekdays* only; 8:30-12:00 / 13:00-17:00)

*Closed on public holidays (including Year-End and New Year holidays)



やさしい日本語

For more information, please contact at the **OTA CITY HALL, International Affairs Division (Kokusai-Ka)** and **OTA INTERNATIONAL ASSOCIATION (Ota-Shi Kokusai Kouryu Kyoukai)**.

Address: 〒373-0817 Ota-Shi Iizuka-Cho 69-3 (Within *Tabunka Kyousei Center Ota*)

Tel: 0276-47-1908 & 0276-48-1001 Email: otaia@mx.city.ota.gunma.jp

太田市役所 国際課・太田市国際交流協会（英語版行政情報）